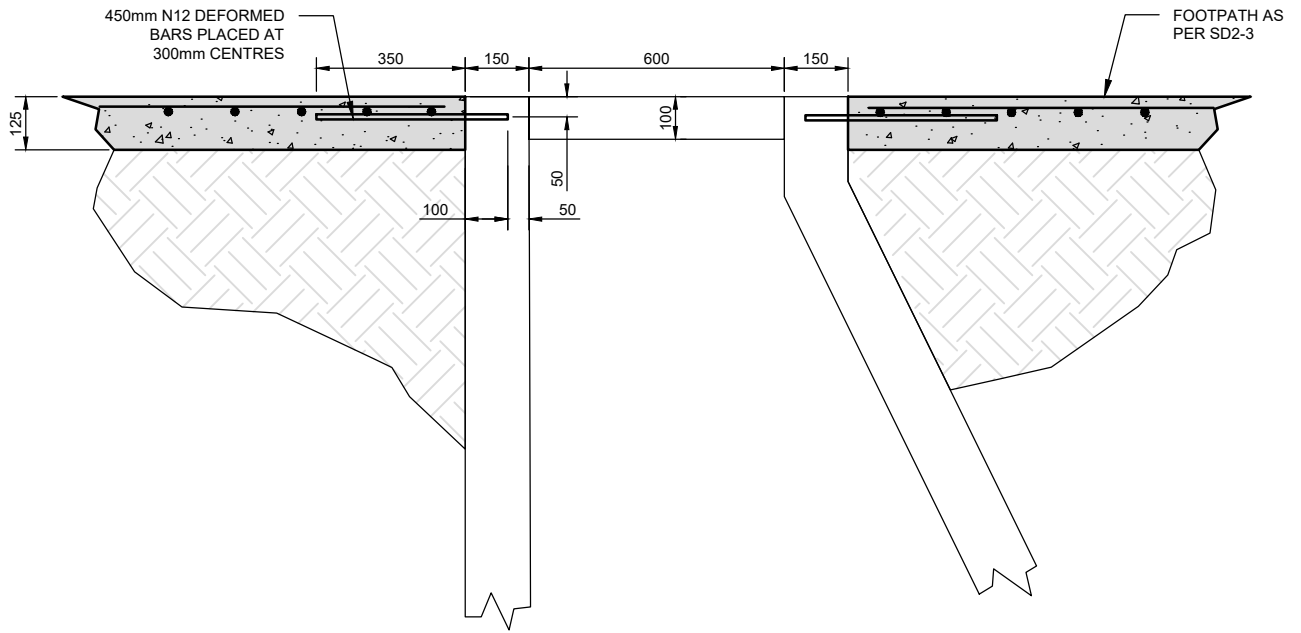
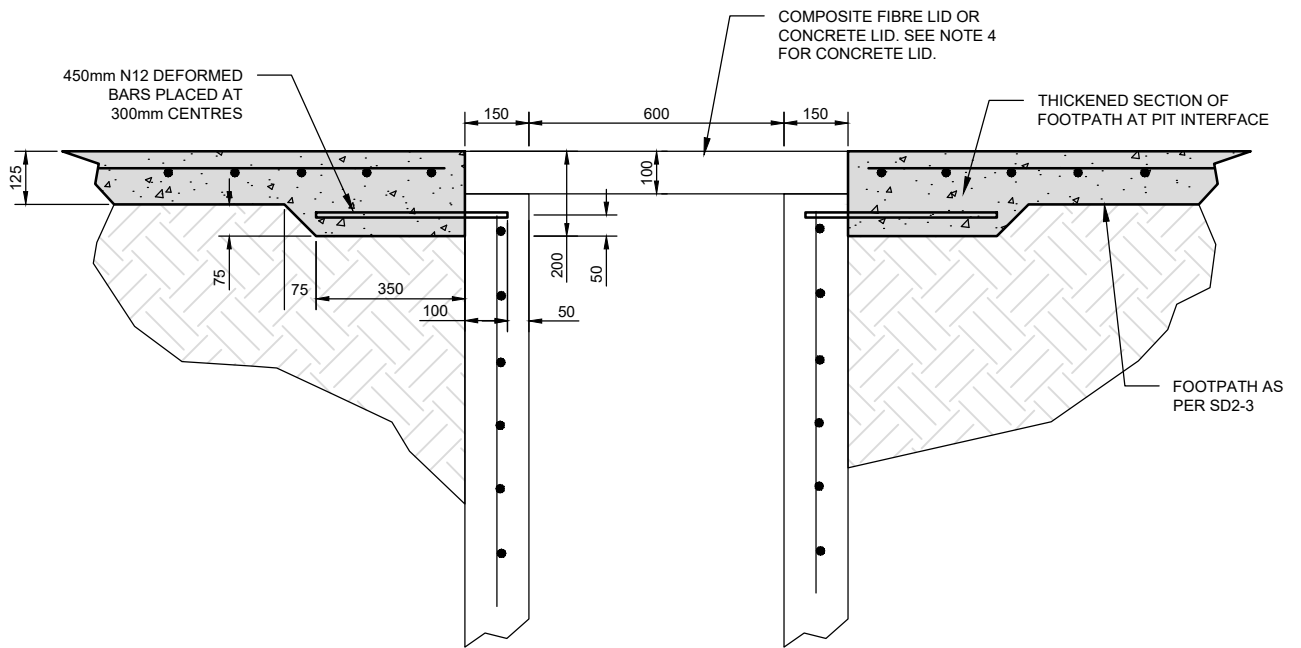


Drawing name: M:\Engineering Services\Engineering Design Projects\RESOURCE References\WCC Standard Drawings\UPDATES\SD2-5A.dwg (24 Jul 2019)




SEWER PIT DETAILS



DRAINAGE PIT DETAILS

NOTES:

1. ALL DIMENSIONS GIVEN ARE INDICATIVE ONLY AND DIMENSIONS ON SITE MAY VARY
2. REFER TO SD2-5 FOR FURTHER INFORMATION ON DOWEL BAR SPACING ARRANGEMENTS
3. SEE SD2-6 FOR PIT COLLAR DETAILS.
4. FOR CONCRETE DRAINAGE PIT LIDS, VERTICALLY POSITION DEFORMED BARS IN LID WITH 50mm MINIMUM CONCRETE COVER. CONCRETE PATH THICKENING IS NOT REQUIRED FOR CONCRETE PIT LIDS. REFER TO SD2-5 FOR DEFORMED BAR DETAILS AND ARRANGEMENT.

Rev	Amendments	Approved	Date		TYPICAL CONCRETE FOOTPATH CONSTRUCTION DETAILS AT SEWER & DRAINAGE PITS	Cad File : SD2-5A.DWG Drawn Date : July 19 Revision : A Drawing No.
A	Issued for construction		July 2019			
						SD2-5A

GENERAL NOTES:
 -DRAWINGS ARE NOT TO SCALE.
 -ALL MEASUREMENTS ARE IN MILLIMETERS UNLESS OTHERWISE STATED.
 -FOR UP TO DATE DRAWINGS PLEASE CHECK WYNDHAM CITY COUNCIL WEB SITE.
 -ALL STANDARD DRAWINGS TO BE USED IN CONJUNCTION WITH SD1-1 (STANDARD DRAWINGS CONDITIONS OF USE).