

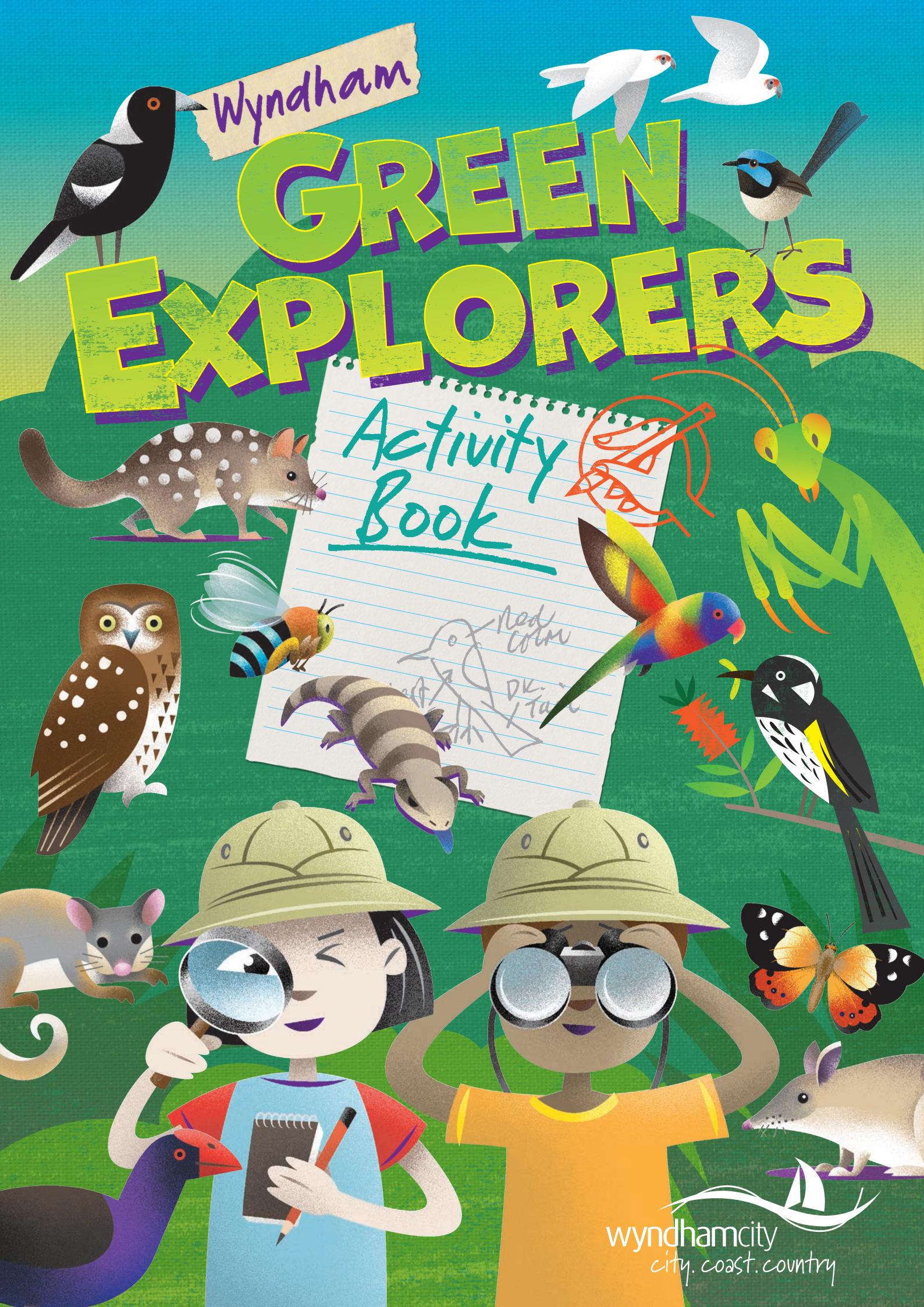
Wyndham

# GREEN EXPLORERS

Activity Book

Red  
Corm  
DK  
/ Ta

wyndhamcity  
city.coast.country



# WATER WARRIORS

We use water every day for things like drinking, cooking, and cleaning. Only 1% of the Earth's freshwater (water without salt) can be used for these things, so we must protect what we have. We can do this by using less water in our homes and by keeping our rivers and creeks clean.



## RIVER RESIDENTS

Platypus are a threatened species and need healthy rivers for their survival. These curious animals forage for food in the riverbed but build their burrows on the riverbank where it's dry.



### 7 WATER SAVING TIPS



1 Take shorter showers.



2 Turn off dripping taps.



3 Brush your teeth with the tap off.



4 Put a bucket in the shower and use the water in your garden.




6 Plant native plants to reduce the amount of water needed to water your garden.



5 Scrape food scraps from your plate instead of rinsing with water.



7 Only do full loads in the washing machine and dishwasher.



Did you know frogs don't drink water? They absorb it through their skin and need to stay wet to survive!

# WERRIBEE RIVER

Flowing right through the middle of Wyndham, Werribee River is an important ecosystem for both humans and animals.

A healthy river ecosystem is important because it provides habitat for native animals and clean water for humans to grow food crops. The plants along the river also help to clean the air we breathe.



Werribee River is a great place for Green Detectives to explore!  
Tick what you find, and mark how many.



Platypus	Rainbow Lorikeet
Ringtail Possum	Long Billed Corella
Microbat	Superb Fairy-wren
Rakali	Sacred Kingfisher
Tawny Frogmouth	Tiger Snake
Pobblebonk Frog	Boobook Owl
Blue Tongue Lizard	Australian Wood Duck

# In the Garden

Growing your own food is a great way to help the environment and is really good for you too!

## Helping the planet

Fruit and vegetables grown on farms often travel a long way in trucks before reaching your dinner plate. This creates carbon emissions that are bad for the planet.

## Eating organic

By not using chemicals in your garden your veggies and fruit will be organic. This is better for you and better for the insects and animals in your garden.

## Saving money

Collecting and growing your own veggie seeds is lots of fun and is a cheap way to grow your own food.

## Connecting with nature

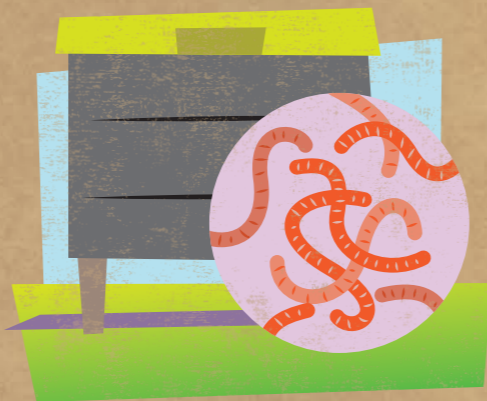
When you get your hands dirty in the garden you connect with the environment around you and what's happening in your garden.

## Fresh is best

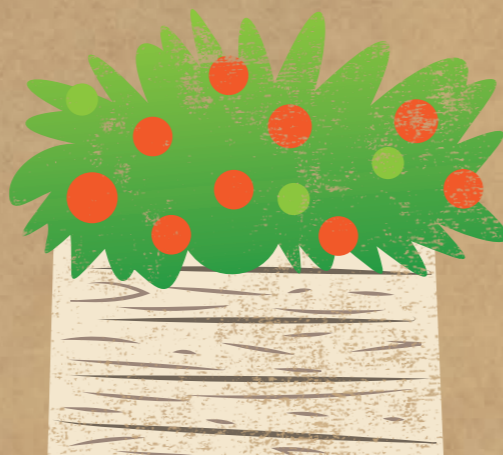
Food from the garden is always fresher and tastes better than buying it from the grocery store.



Reduce waste by putting your garden cuttings and food scraps into a compost bin or worm farm. Turn your waste into valuable food for your garden!



Avoid using chemicals in the garden, they can harm native insects like me.



## SEED ACTIVITY

Follow these simple steps to discover how seeds grow into plants. Once your seeds have grown, you can then plant them into the garden.

### Step 1

Find an old jar. An old jam jar or something similar is perfect.

### Step 2

Fill the jar halfway with wet paper towel. Make sure you fill all the empty spaces.

### Step 3

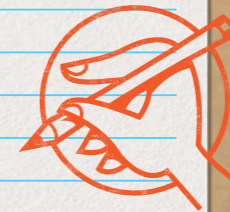
Plant your seeds. Bean or pea seeds are perfect for this activity. Push 3 or 4 seeds down the side of the jar so that they sit between the glass and the paper towel.

### Step 4

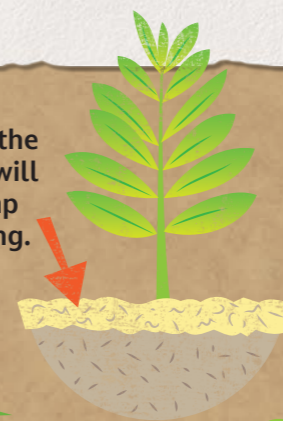
Make sure you keep your paper towel damp over the coming days so that your seeds can grow.

### Step 5

Keep a diary over the next ten days and write down how your seeds are changing.



Placing mulch around the plants in your garden will help keep the soil damp and stop weeds growing.



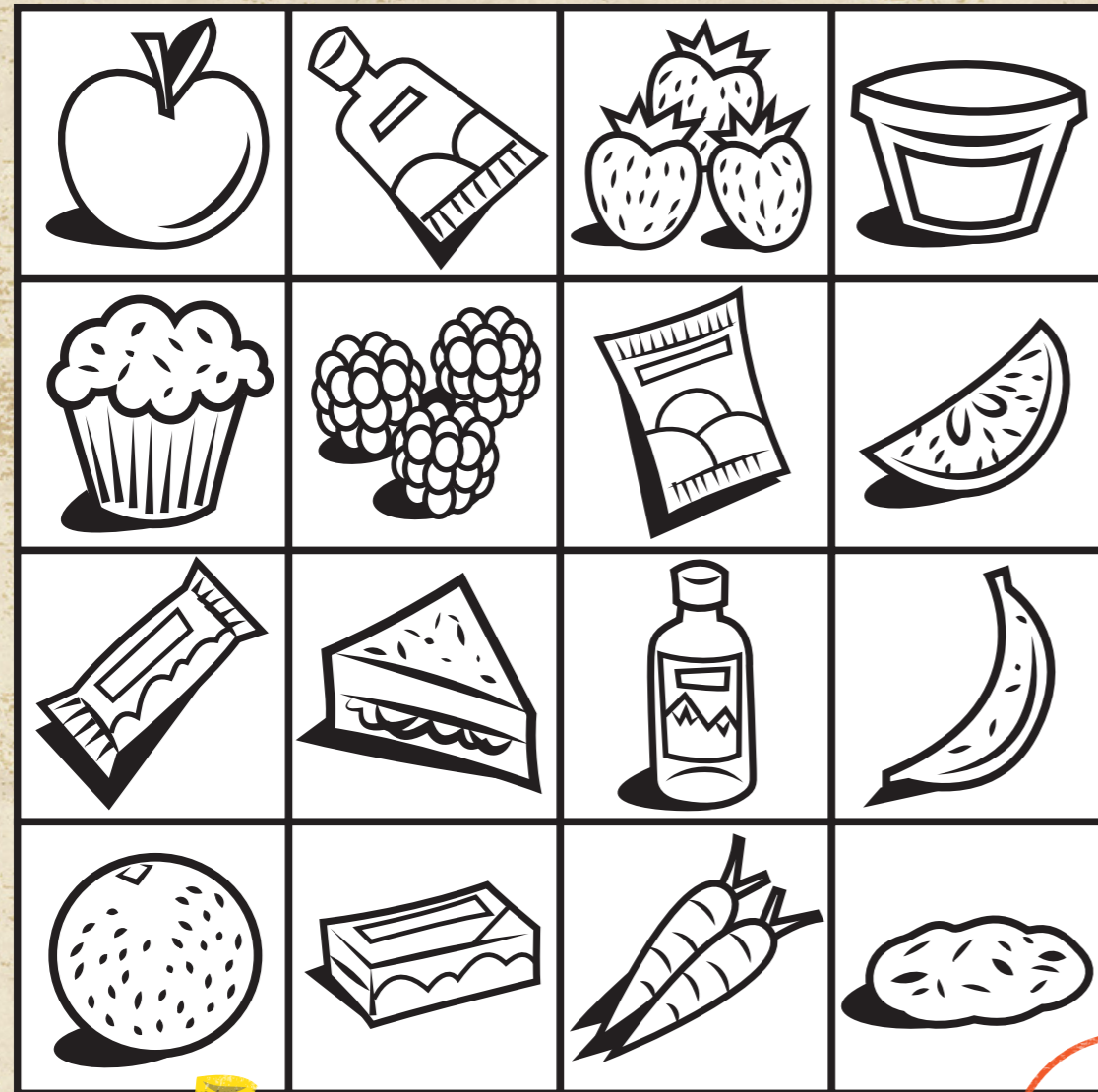
Once your seeds have grown lots of strong roots and you have finished your ten day seed diary, plant them into your garden and harvest the peas and beans when they are ready.



I love snacking on the bad insects that eat your veggies!

# SUSTAINABLE FOOD

'Nude Food' is food without extra packaging. Many of our favourite lunchbox treats are wrapped in plastic packaging that ends up in landfill and is bad for the environment. It's super easy to pack delicious lunchbox snacks in reusable containers and reduce our plastic waste.



What nude food will you pack in your next school lunch box? Colour in the pictures and circle the nude food items.



Did you know bananas have their own natural packaging?

Did you know that 65% of the food we throw away at home could have been eaten? Rather than throw them in the bin, turn your fruit and veggie scraps into tasty muffins!

Please cook these muffins with an adult as they will need your help!



## NO WASTE MUFFINS

### Method

Preheat your oven to 180C fan-forced.

### Step 1

Sift the dry ingredients into a mixing bowl and make a well in the centre.

### Step 2

Melt the butter/coconut oil and let cool slightly.

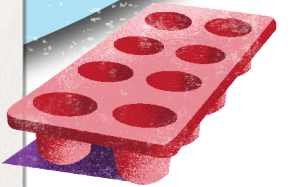
### Step 3

Add all the wet ingredients into your dry ingredients, along with your chosen veggies or fruit. Gently mix everything together with a wooden spoon.

### Step 4

Line a muffin tray with muffin cases and spoon mixture evenly into each one. Bake for 20 minutes or until firm to touch.

- 2 cups self-raising flour
- 1/2 cup caster sugar
- 1/2 cup of milk (cow, almond, coconut etc.)
- 2 eggs
- 60g butter or coconut oil
- 1 1/2 cups left over fruit or veg chopped or grated (bananas, strawberry, carrots, capsicum, etc.)
- 1 cup choc chips or grated cheese (depending if sweet or savory)



We love banana & choc chip or carrot and cheese, but anything goes! Try your own combination. Even leftover vegetables from last night's dinner is delicious.



# WILDFLOWERS FOR POLLINATORS

A habitat is a place where an animal can find the food, water and shelter that it needs to survive.



Planting a patch of native wildflowers will fill your garden with colour and provide habitat for our native butterflies and bees. They will thank you by pollinating your veggies.



Did you know there are over 1500 species of native bees in Australia?

Blue Banded Bee  
*Amegilla cingulata*



Yellow Admiral  
*Vanessa itea*

Plant these wildflowers for our pollinators.



Drumsticks  
*Pycnosorus globosus*



Chocolate Lily  
*Dichopogon strictus*  
(they really do smell like chocolate!)



Basalt Daisy  
*Brachyscome basaltica*



Bluebells  
*Wahlenbergia*

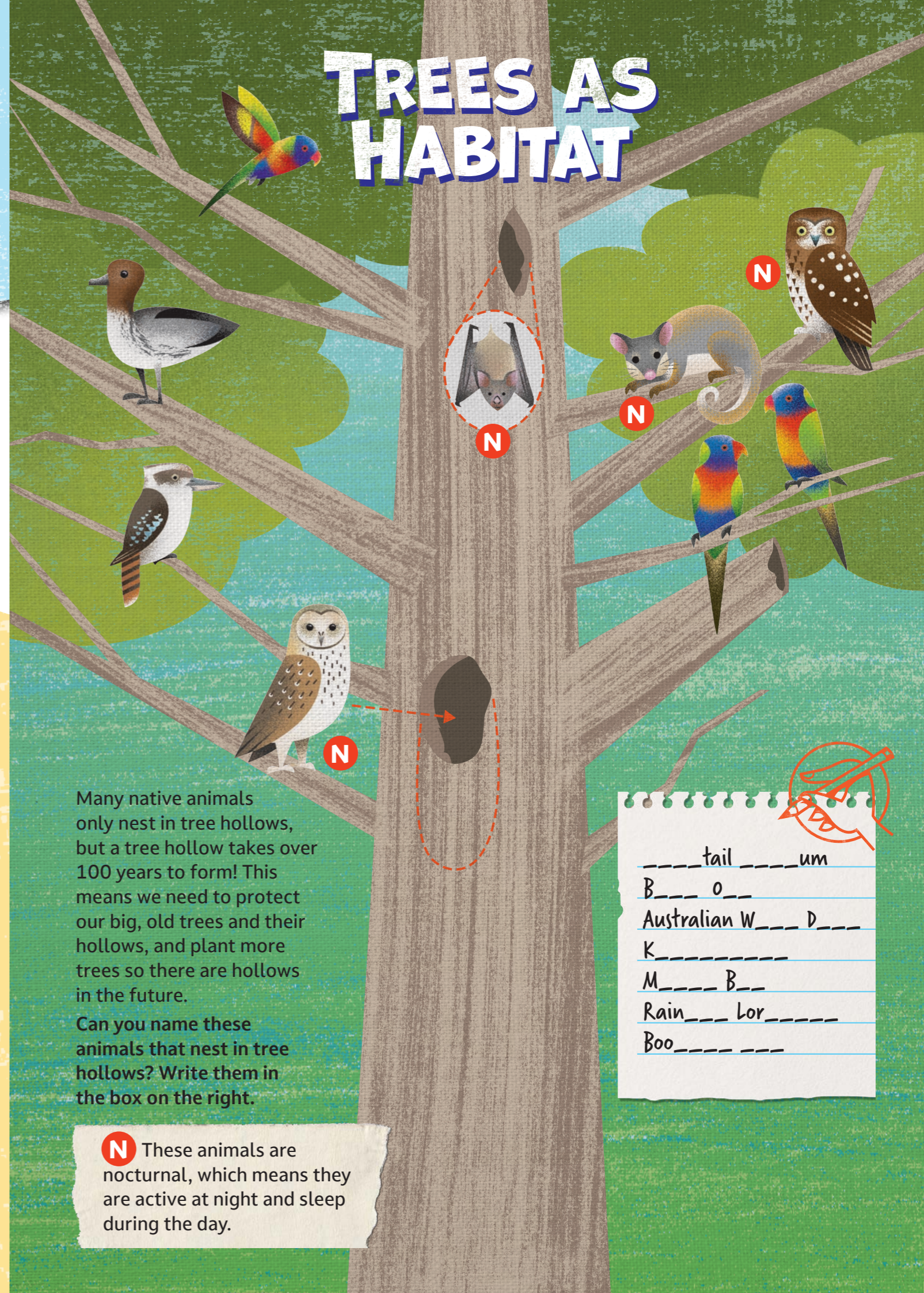


Austral Stork's-bill  
*Pelargonium australe*

These plants are available at many Indigenous plant nurseries.



# TREES AS HABITAT



Many native animals only nest in tree hollows, but a tree hollow takes over 100 years to form! This means we need to protect our big, old trees and their hollows, and plant more trees so there are hollows in the future.

Can you name these animals that nest in tree hollows? Write them in the box on the right.

**N** These animals are nocturnal, which means they are active at night and sleep during the day.

\_\_\_\_\_ tail \_\_\_\_\_ um  
B \_\_\_\_\_ o \_\_\_\_\_  
Australian W \_\_\_\_\_ D \_\_\_\_\_  
K \_\_\_\_\_  
M \_\_\_\_\_ B \_\_\_\_\_  
Rain \_\_\_\_\_ Lor \_\_\_\_\_  
Boo \_\_\_\_\_

# Reduce & Reuse

We all need to do our part in reducing the amount of waste we make. Try these challenges at home instead of buying something new.



Explore your local op shop for some funky second-hand clothes. Get crafty and add some personal touches to your new outfit.



Do a toy swap with your friends or donate your old toys to charity.



Don't forget your reusable bags when you go shopping!



Pack your school lunch into reusable containers to reduce the amount of plastic packaging going in the bin.



Collect scrap pieces of paper and cardboard to use in your craft or school projects.

# Recycle

Write which bin number each item goes into.



Circle the three items that can be donated to charity.

- Books
- Broken mug (ceramics)
- Branches
- Tea bags
- Aluminium cans
- Milk bottles (plastic)
- Newspaper
- Metal tin
- Timber offcuts



- T-shirt
- Food scraps (veggies)
- Glass jar
- Dog poo
- Toys
- Egg shells
- Nappies
- Plastic bag
- Leaves
- Plastic drink bottles
- Takeaway coffee cup
- Meat and bones
- Recyclable plastic container
- Brochures and leaflets

# MY SUSTAINABLE HOUSE

A sustainable home makes use of things like waste, energy and water to reduce the impacts on the environment.

Colour in 10 things on this page that make this house sustainable for both humans and animals.



Phascogale



Barn Owl



Parrot



Frog



Lorikeet



Bandicoot



# ANIMAL WORD SEARCH

Can you find all the animals on this page in the word search below?

Y	Z	G	C	P	H	A	S	C	O	G	A	L	E	D	B
C	L	O	R	I	K	E	E	T	A	P	U	T	V	P	L
F	O	S	A	M	R	C	T	U	D	W	B	T	E	N	U
C	Q	N	P	A	S	N	A	K	E	W	A	W	K	T	E
K	R	F	L	O	C	Y	A	S	K	S	R	S	J	K	T
A	E	J	A	E	O	T	C	J	Y	B	N	B	C	X	O
N	R	E	T	B	A	N	D	I	C	O	O	T	E	E	N
G	A	G	Y	H	B	V	B	N	L	O	W	O	B	R	G
A	K	T	P	R	T	R	A	I	I	H	L	H	Q	J	U
R	A	U	U	F	I	S	O	T	L	R	S	K	U	D	E
O	L	N	S	F	R	D	C	L	I	L	G	X	O	L	L
O	I	R	U	A	T	O	L	K	G	O	D	E	L	Q	I
R	U	Y	S	T	T	A	G	Y	M	A	T	R	L	C	Z
S	G	Q	B	S	Y	B	C	Q	L	H	Y	J	Y	E	A
T	A	W	N	Y	F	R	O	G	M	O	U	T	H	F	R
D	S	P	A	P	A	R	R	O	T	I	N	V	B	U	D



Brolga



Blue Tongue Lizard



Tawny Frogmouth



Platypus



Snake



Spoonbill



Quoll



Rakali



Kangaroo





# WETLAND DETECTIVE

Visit Heathdale Glen Orden Wetland and put your explorer hat on! Find the things in the list and write down your notes while you're exploring.

**Heathdale Glen Orden Wetland –  
Rosella Ave, Werribee**

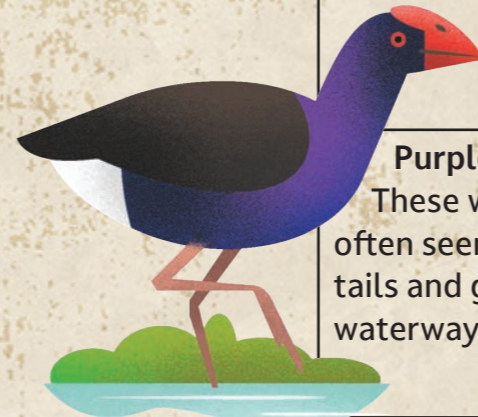
Wetlands are important in urban areas because they help to clean the water that runs off our roads when it rains – this is called stormwater. They also create habitat for animals such as frogs and waterbirds.


Pick up three pieces of litter each time you visit a wetland and put them in the bin, this helps keep our wildlife safe.

Please don't feed the ducks, bread isn't very good for them.



What to find	Your Field Notes
 <p><b>Magpies</b> They like to eat the worms that live in the soil around the wetlands.</p>	<p>What is the Magpie/s doing?</p>
<p>Can you find a trail of ants collecting food for their colony?</p> 	<p>Follow their trail, where does it lead to?</p>
<p>Find a gum leaf and crush it in your hand - what does it smell like?</p> 	<p>Do gum leaves from different trees smell different?</p>
<p><b>Basalt Rocks</b> These are great for lizards to bask on in the grasslands.</p> 	<p>How many rocks can you find?</p>
<p>There are 214 known species of frogs in Australia.</p> 	<p>How many different kinds of frogs can you hear calling?</p>
<p><b>Willie Wagtail</b> They get their name from their constant sideways wagging of their tail.</p> 	<p>Watch this funny bird and make notes about what it was doing and why.</p>



What to find	Your Field Notes
<p><b>Cormorants</b> There are different species of Cormorants in Australia, but they are all great swimmers.</p>	<p>What colour was the Cormorant that you saw? Don't forget the colour of its beak and legs!</p>
<p>Find an interesting shaped leaf.</p> 	<p>Draw a picture of it here.</p>
<p><b>Purple Swamphen</b> These waterbirds are often seen flicking their tails and grazing near waterways.</p>	<p>Why do you think their feet are so big?</p>
<p>Can you find a water plant that looks like a four-leaf clover?</p>	<p>Draw what you found.</p>
<p><b>Pacific Black Duck</b> Their favourite food is aquatic plants but they also eat small insects and crustaceans.</p>	<p>How many have you found?</p>

# GRASSLAND WALK



Visit Lollypop Grassland Walk and fill this page with drawings of the native flowers and grasses you find. Don't forget to fill your grassland with lots of colour!

**Lollypop Grassland Walk –  
36 Feathertop Drive,  
Wyndham Vale**

## EASTERN BARRED BANDICOOT

These small marsupials were once found in grasslands just like this one but are now an endangered species. They build their nests amongst the native grasses and forage in the grasslands at night for delicious grubs and beetles.



Found all over Australia, the Red-capped Plover is a small beach-nesting shorebird that lays its speckled eggs in a camouflaged nest on the sand. This small bird faces many challenges when raising its young, help your Red-capped Plover chick make a run for the finish line!

# PLOVER RUN

You will need – Dice and some counters to play. Grab some friends, roll the dice and off you go!



**START**

It's breeding season and you're full of energy! **GO!**

**11** A cat is prowling nearby – go back 1 space



It's International Shorebirds Day – go forward 3 spaces

**23** You hit severe weather – go back 3 spaces

Local school visits your beach to learn about you – go forward 3 spaces



**10**

It's breeding season and you're full of energy! **GO!**

**9** A walker keeps dog on a lead – go forward 5 spaces



**14**

**15** You are almost tangled in fishing line – go back 1 space



**22**

**21** Volunteers plant more coastal habitat for you – go forward 3 spaces



**26**

A fox is on the prowl – go back 1 space



You have successfully raised two chicks!



**2**

**3** You are chased by a dog – go back to the Start



**8**

**7** You are disturbed by walkers – go back 3 spaces



**17** People keep their distance from you – go forward 3 spaces



**19** Not enough food for you to eat – go back 5 spaces



**28** School has a clean up litter day – go forward 1 space



**END**

**4**

**5** You find lots of food – go forward 3 spaces



**6**

**18**

**30**

**31** A falcon is hunting near you – go back 3 spaces



**32**

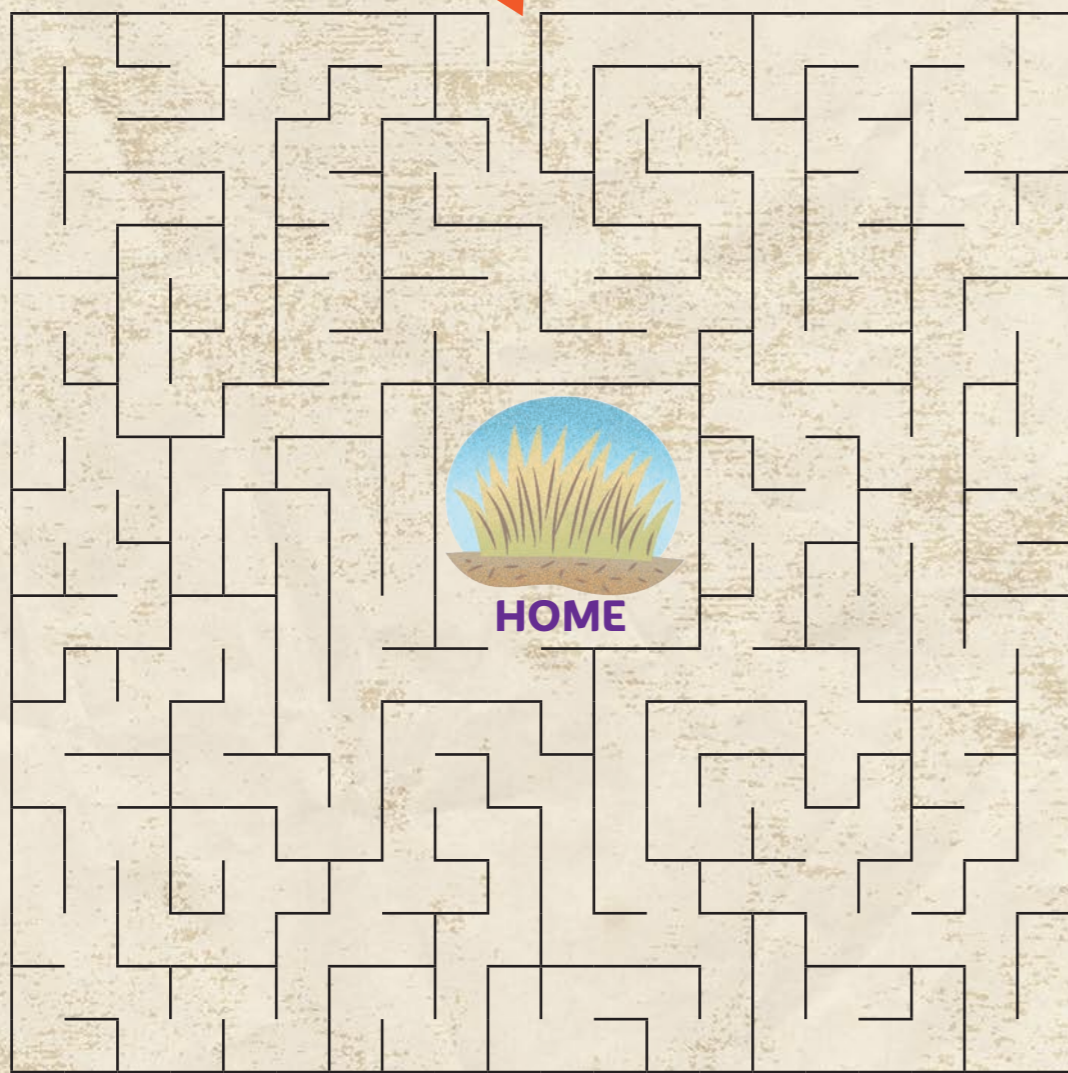
# WANDERER MAZE

Help this Plains Wanderer avoid the **THREATS** and get back to her home in the grasslands.



I'm a fussy ground-dwelling bird and I like my grassland home to be just right but most of my habitat is now gone.

**START**



**THREATS**



Housing and farming



Foxes

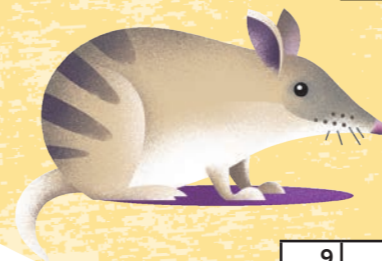


Fires



Cats

# CROSSWORD

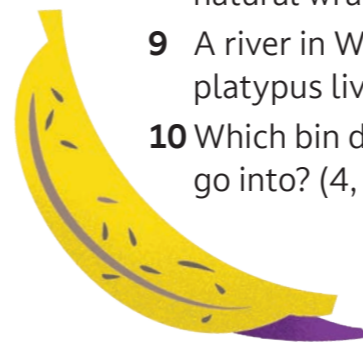


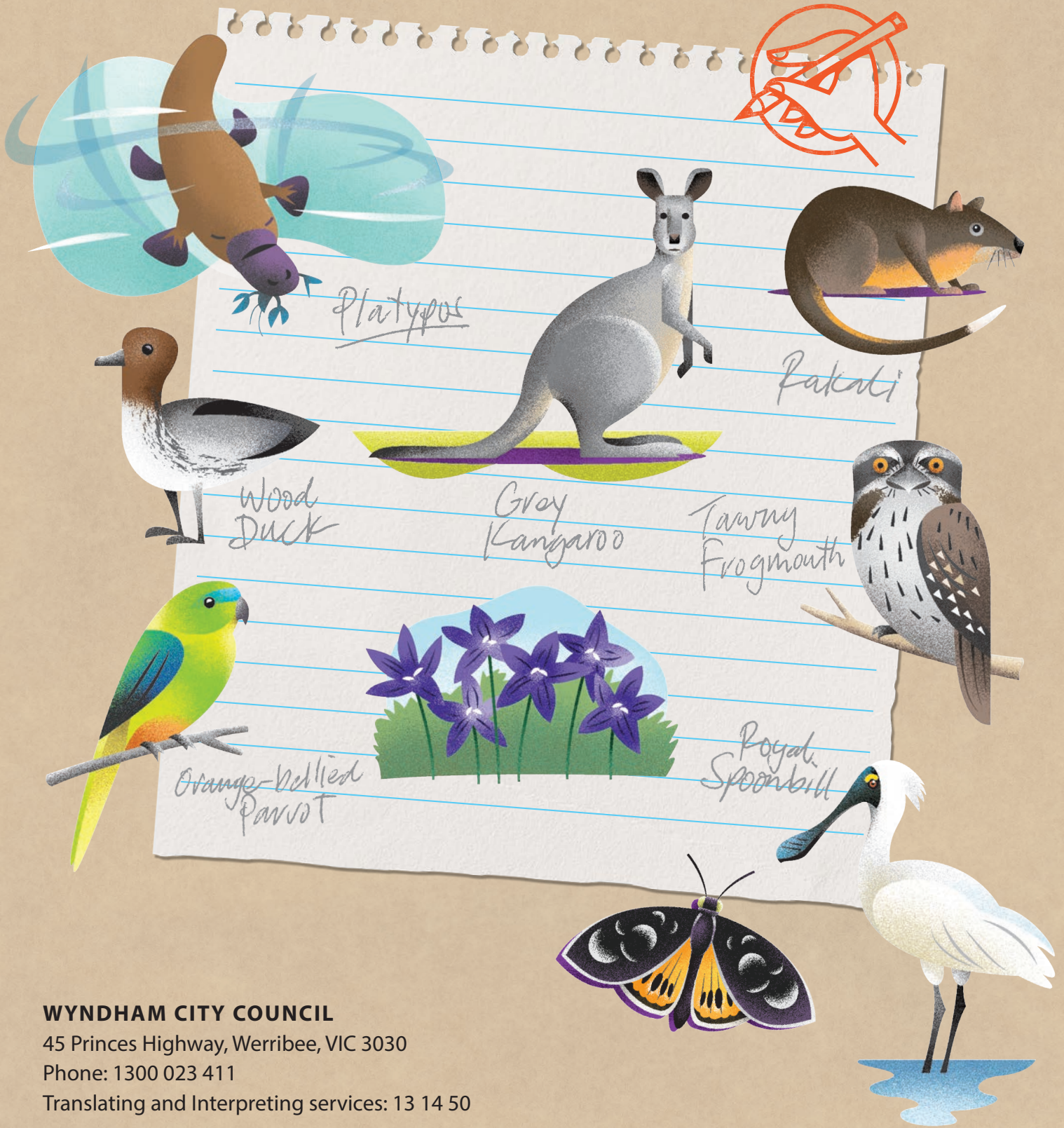
## ACROSS

- 3 A way to recycle your food scraps. (7)
- 6 A plant that you can grow in your pollinator garden that is also used to play a musical instrument? (10)
- 8 A nude food that has its own natural wrapper. (6)
- 9 A river in Wyndham where platypus live. (8, 5)
- 10 Which bin does your recycling go into? (4, 3)

## DOWN

- 1 Where does an Eastern Barred Bandicoot live? (10)
- 2 I'm nocturnal and live in a tree hollow. (6)
- 4 Taking shorter showers will help to. (4, 5)
- 5 Don't feed us bread, it's bad for our health. (5)
- 6 If I'm not on a lead I might chase nesting shore birds. (3)
- 7 Native flower that smells like chocolate? (9, 4)





**WYNDHAM CITY COUNCIL**

45 Princes Highway, Werribee, VIC 3030

Phone: 1300 023 411

Translating and Interpreting services: 13 14 50

✉ [mail@wyndham.vic.gov.au](mailto:mail@wyndham.vic.gov.au)

🌐 [www.wyndham.vic.gov.au](http://www.wyndham.vic.gov.au)

*This project was funded through the Department of Environment, Land, Water and Planning's (DELWP) Caring for Our Local Environment (COLE) Initiative.*



Environment,  
Land, Water  
and Planning

