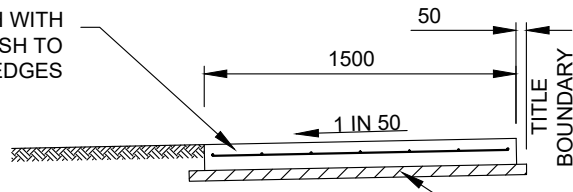


Drawing name: M:\Engineering Services\Engineering Design Projects\RESOURCE References\WCC Standard Drawings\SD2-1.dwg (28 May, 2024)

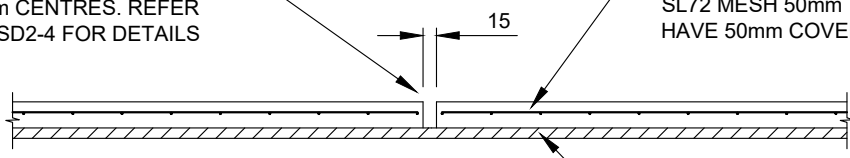
125mm THICK N25 CONCRETE PATH WITH SL72 MESH 50mm TOP COVER. MESH TO HAVE 50mm COVER TO ALL EDGES



**SECTION A - A**

50mm MECHANICALLY COMPACTED DEPTH OF CLASS 3, 20mm NOM. SIZE FINE CRUSHED ROCK

EXPANSION JOINTS LOCATED BOTH SIDES OF VEHICLE CROSSING AND AT A MAX OF 12m CENTRES. REFER TO SD2-4 FOR DETAILS

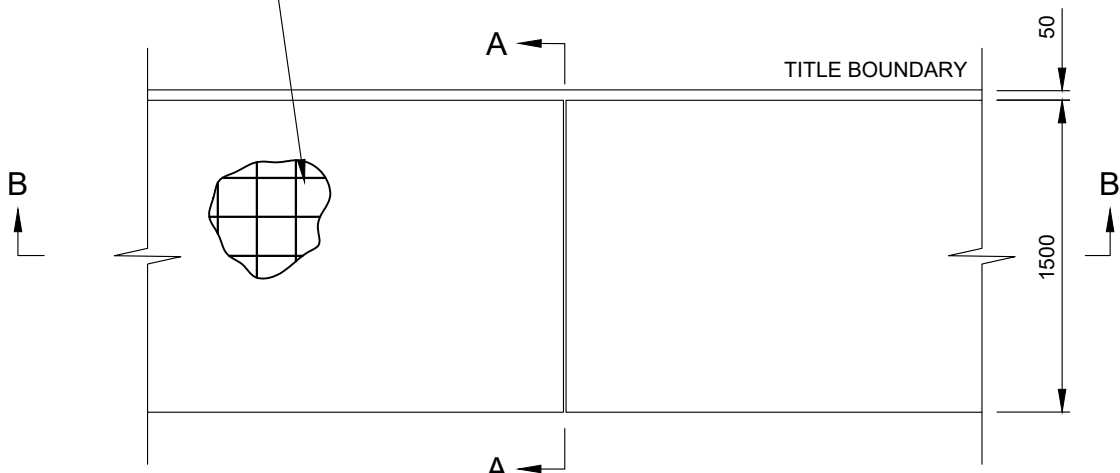


**SECTION B - B**

125mm THICK N25 CONCRETE PATH WITH SL72 MESH 50mm TOP COVER. MESH TO HAVE 50mm COVER TO ALL EDGES

50mm MECHANICALLY COMPACTED DEPTH OF CLASS 3, 20mm NOM. SIZE FINE CRUSHED ROCK

125mm THICK N25 CONCRETE PATH WITH SL72 MESH 50mm TOP COVER. MESH TO HAVE 50mm COVER TO ALL EDGES



**PLAN**

**NOTES :**

1. TIE BARS TO BE INSTALLED AT 400mm MAXIMUM CENTRES, WITH 4 BARS MINIMUM, COMMENCING 150mm FROM EDGE.
2. WEAKENED PLANE JOINTS LOCATED AT SPACING EQUAL TO THE WIDTH OF THE PATH AND MADE WITH A 'T' IRON OR CONCRETE SAW CUT.
3. CONCRETE TO BE LIGHT BROOM FINISHED WITH EDGE AND JOINTS NEATLY TOOLED AFTER THE BROOM IS APPLIED.
4. ALL FINISHED SURFACES TO COMPLY WITH AS 4586 SLIP RESISTANT CLASSIFICATION OF NEW PEDESTRIAN SURFACE MATERIAL.
5. THE USE OF COLOURED CONCRETE MUST BE APPROVED BY COUNCIL. MINIMUM STRENGTH OF COLOURED CONCRETE TO BE 32 MPa.
6. ALL DIMENSIONS IN MILLIMETRES UNLESS OTHERWISE SHOWN.

REV	AMENDMENTS	APPROVAL	DATE
B	EDITED NOTES 1-3. MINOR DRAFTING MODIFICATIONS		19-06-07
C	ADDED NOTE 5		01-09-09
D	EDITED GRADING & MESH		05-04-13
E	UPDATED TO REFLECT CURRENT STANDARDS	M.BRIGANDI	21-05-24

**FOOTPATH AGAINST TITLE BOUNDARY**

45 PRINCES HIGHWAY  
WERRIBEE, VIC 3030

TEL: 1300 023 411  
wyndham.vic.gov.au

CAD FILE: SD2-1.DWG
DRAWN DATE: FEB 2024
REVISION: E
DRAWING NO.: <b>SD2-1</b>

GENERAL NOTES: -DRAWINGS ARE NOT TO SCALE.  
 -ALL MEASUREMENTS ARE IN MILLIMETERS UNLESS OTHERWISE STATED.  
 -FOR UP TO DATE DRAWINGS PLEASE CHECK WYNDHAM CITY COUNCIL WEBSITE.  
 -ALL STANDARD DRAWINGS TO BE USED IN CONJUNCTION WITH SD1-1 (STANDARD DRAWINGS CONDITIONS OF USE).