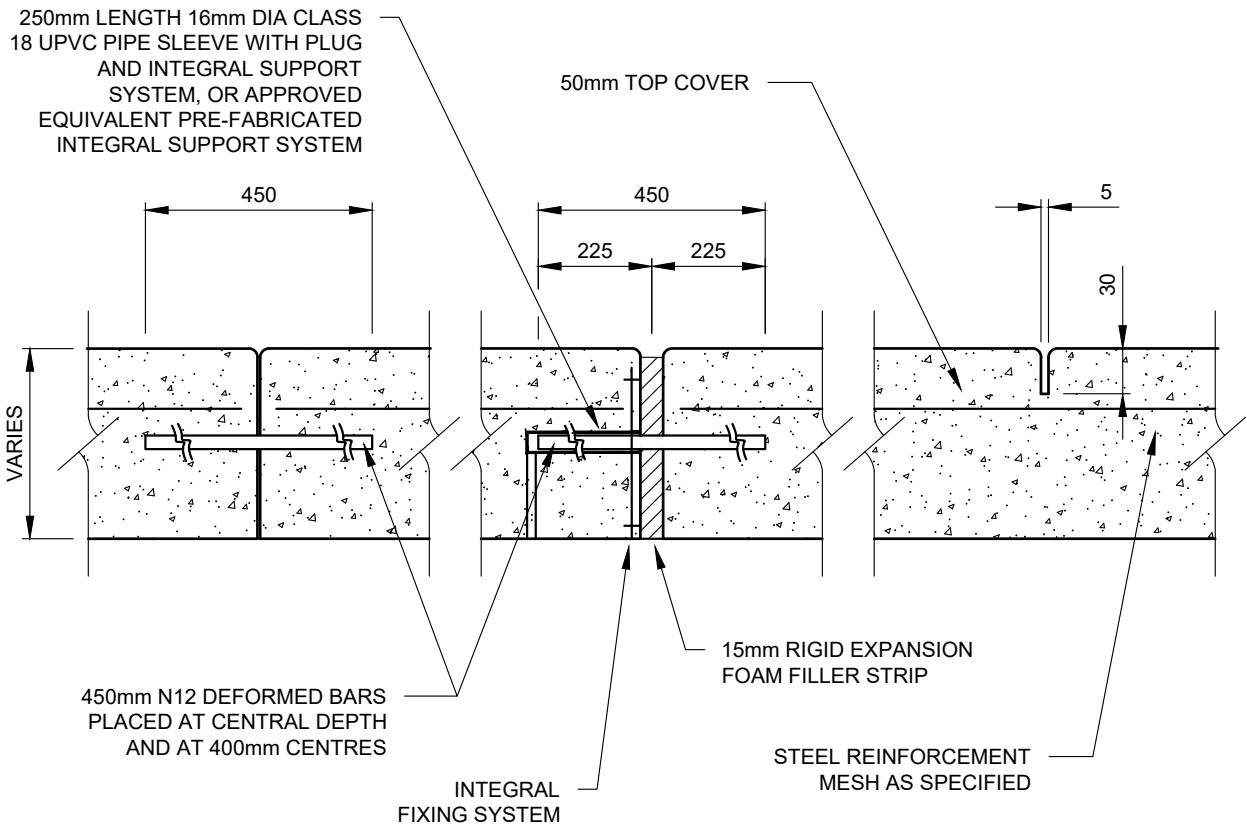


Drawing name: M:\Engineering Services\Engineering Design Projects\RESOURCE References\WCC Standard Drawings\SD2-4.dwg (28 May, 2024)



CONSTRUCTION JOINT

EXPANSION JOINT

WEAKENED PLANE JOINTS

CONCRETE SAWCUT OR 'T' IRON AS PER NOTE 2

NOTES:

1. TIE BARS TO BE INSTALLED AT 400 MAXIMUM CENTRES, WITH 4 BARS MINIMUM, COMMENCING 150 FROM EDGE.
2. DOWEL BARS TO BE INSTALLED AT 400 MAXIMUM CENTRES COMMENCING AT A MINIMUM OF 100 AND A MAXIMUM OF 200 FROM THE EDGE OF PATH. 16 DIAMETER PVC SLEEVE WITH END CAP OR CLOSED END TO BE FITTED TO ONE END OF THE BAR. DOWEL BARS TO BE SECURELY TIED TO LONGITUDINAL REINFORCING MESH.
3. EXPANSION JOINTS LOCATED BOTH SIDES OF VEHICLE CROSSING AND AT A MAXIMUM OF 12000 CENTRES.
4. WEAKENED PLANE JOINTS LOCATED AT SPACING EQUAL TO THE WIDTH OF THE PATH AND MADE WITH A 'T' IRON OR CONCRETE SAW CUT.
5. IN SHARED PATHS WEAKENED PLANE JOINTS MUST BE MADE BY CONCRETE SAW CUTTING.
6. COUNCIL APPROVED PREFABRICATED EXPANSION JOINT AND/OR JOINING SYSTEMS WITH 450 N12 DEFORMED BARS PLACED AT CENTRAL DEPTH AND AT 400 CENTRES.
7. ALL DIMENSIONS IN MILLIMETRES UNLESS OTHERWISE SHOWN.

REV	AMENDMENTS	APPROVAL	DATE
B	EDITED LEADER & NOTES, MINOR DRAFTING MODIFICATIONS		19-06-07
C	ADDED NOTE 7		01-09-09
D	REMOVE BITUMEN REQUIREMENT IN EXPANSION JOINT		05-04-13
E	UPDATED TO REFLECT CURRENT STANDARDS	M.BRIGANDI	21-05-24

CONCRETE PATH AND PAVEMENT JOINTS DETAILS

45 PRINCES HIGHWAY
WERRIBEE, VIC 3030

TEL: 1300 023 411
wyndham.vic.gov.au

CAD FILE: SD2-4.DWG
DRAWN DATE: FEB 2024
REVISION: E
DRAWING NO.: SD2-4

GENERAL NOTES: -DRAWINGS ARE NOT TO SCALE.
 -ALL MEASUREMENTS ARE IN MILLIMETERS UNLESS OTHERWISE STATED.
 -FOR UP TO DATE DRAWINGS PLEASE CHECK WYNDHAM CITY COUNCIL WEBSITE.
 -ALL STANDARD DRAWINGS TO BE USED IN CONJUNCTION WITH SD1-1 (STANDARD DRAWINGS CONDITIONS OF USE).