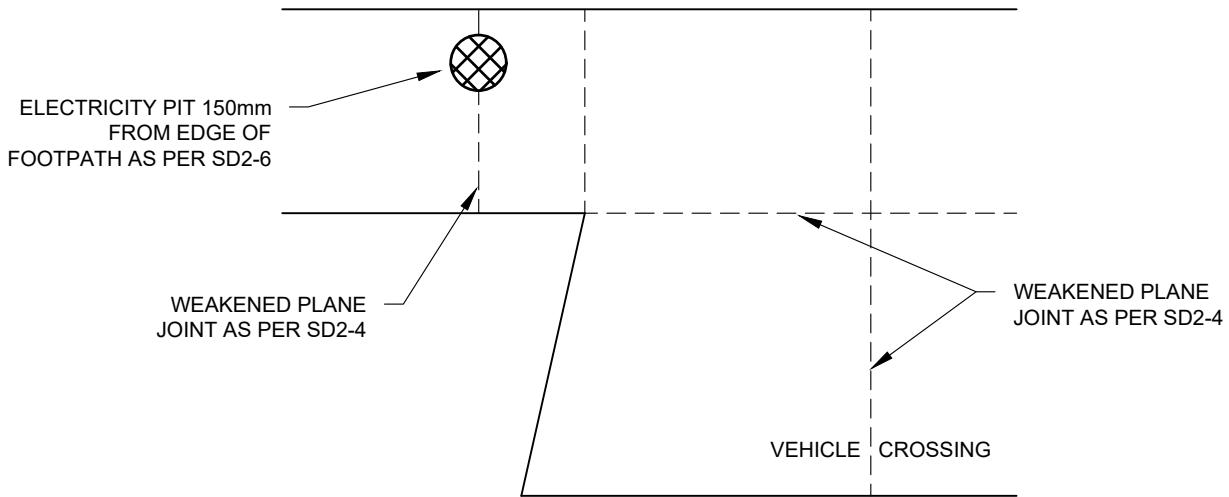
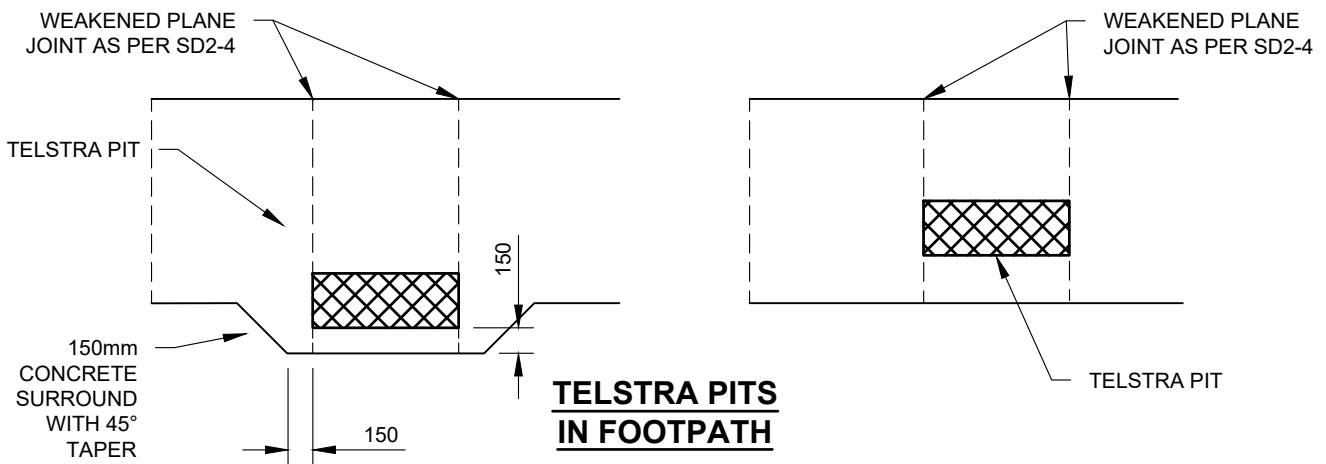


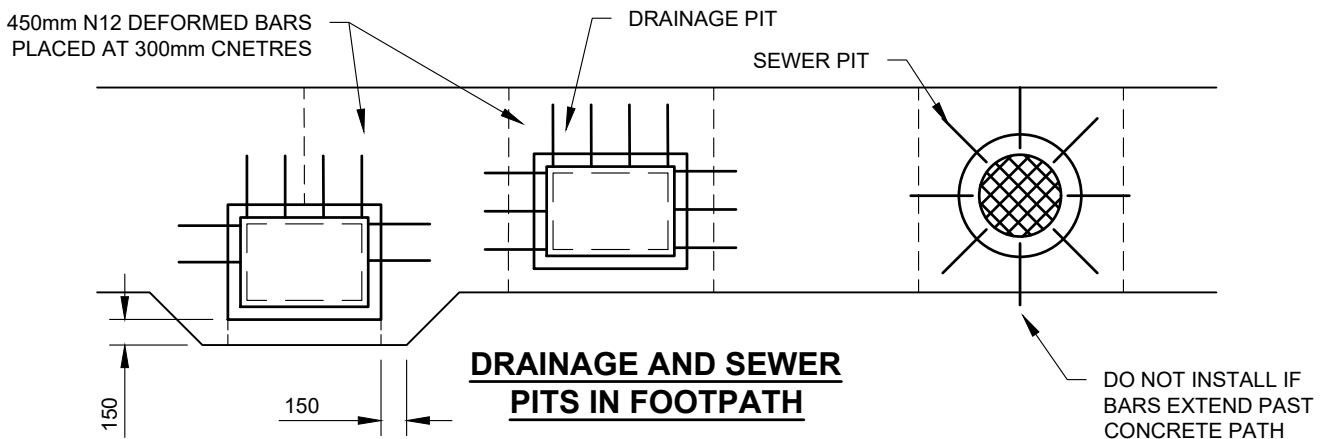
Drawing name: M:\Engineering Services\Engineering Design Projects\RESOURCE References\WCC Standard Drawings\SD2-5.dwg (28 May, 2024)



### ELECTRICITY PIT IN FOOTPATH



### TELSTRA PITS IN FOOTPATH



**NOTES:**

1. WEAKENED PLANE JOINT SPACING TO BE AT PATH WIDTH.
2. MINIMUM SPACING BETWEEN WEAKENED PLANE JOINTS IS 500mm.
3. REFER TO SD2-5A & SD2-6 FOR PIT COLLAR DETAILS.
4. FOR CONSTRUCTION DETAILS ON DRAINAGE AND SEWER PITS, REFER TO SD2-5A
5. ALL DIMENSIONS IN MILLIMETRES UNLESS OTHERWISE SHOWN.

REV	AMENDMENTS	APPROVAL	DATE
B	EDITED NOTES 2-4, MINOR DRAFTING MODIFICATIONS		19-06-07
C	DETAILS CHANGE FOR DRAINAGE AND SEWER PITS		JULY 19
D	UPDATED TO REFLECT CURRENT STANDARDS	M.BRIGANDI	21-05-24

**TYPICAL CONCRETE FOOTPATH TREATMENT AT SERVICE AUTHORITY PITS**



45 PRINCES HIGHWAY  
WERRIBEE, VIC 3030

TEL: 1300 023 411  
wyndham.vic.gov.au

CAD FILE: SD2-5.DWG
DRAWN DATE: FEB 2024
REVISION: D
DRAWING NO.: <b>SD2-5</b>

GENERAL NOTES: -DRAWINGS ARE NOT TO SCALE.  
 -ALL MEASUREMENTS ARE IN MILLIMETERS UNLESS OTHERWISE STATED.  
 -FOR UP TO DATE DRAWINGS PLEASE CHECK WYNDHAM CITY COUNCIL WEBSITE.  
 -ALL STANDARD DRAWINGS TO BE USED IN CONJUNCTION WITH SD1-1 (STANDARD DRAWINGS CONDITIONS OF USE).