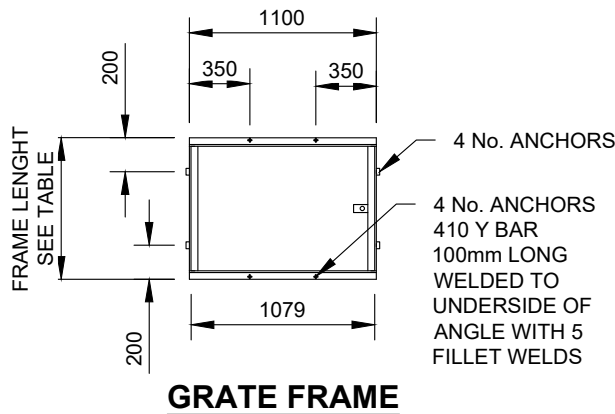
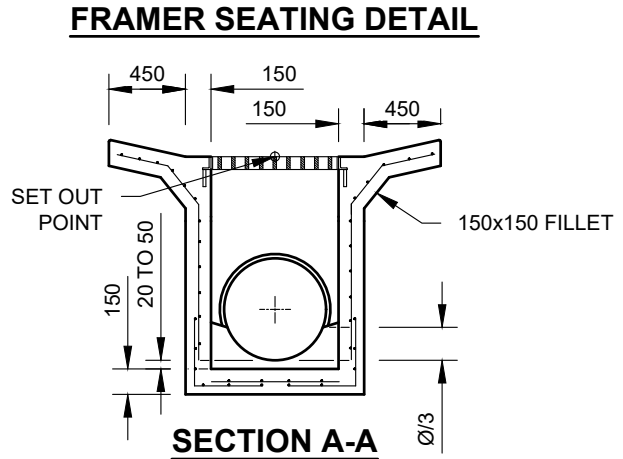
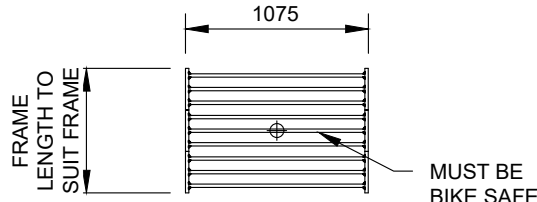
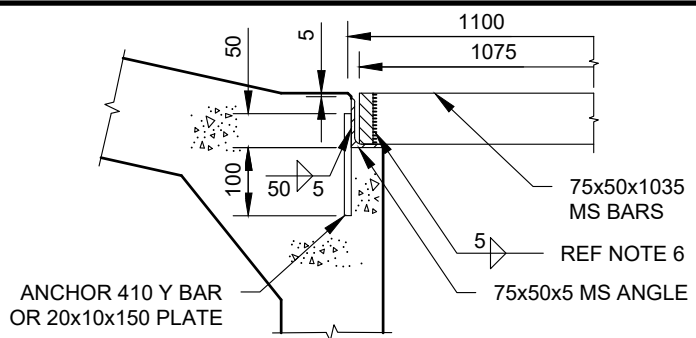
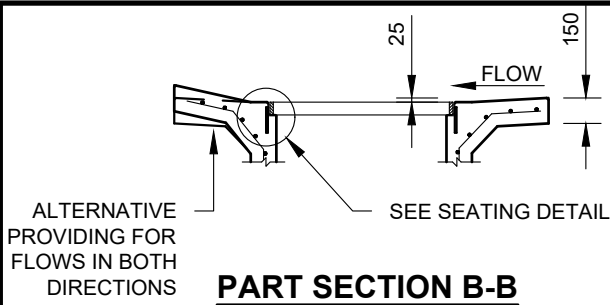
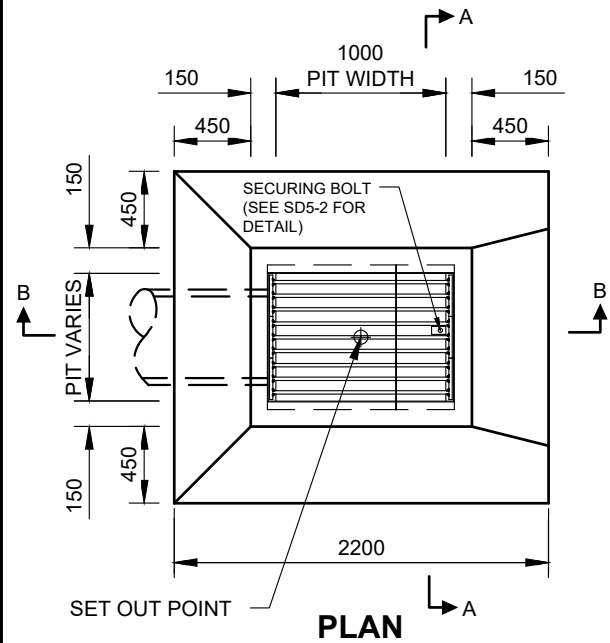


Drawing name: M:\Engineering Services\Engineering Design Projects\RESOURCE References\WCC Standard Drawings\SD5-1.dwg (28 May, 2024)



PIT TYPE	PIT TOP INTERNAL DIM		FRAME LENGTH	NUMBER OF GRATE UNITS
	LENGTH	WIDTH		
1	750	1000	750	3
2	1000	1000	1000	4
3	1500	1000	1500	6
4	2000	1000	2000	8
5	2500	1000	2500	10




PIT, FRAME AND GRATE DETAILS

NOTES:

- THIS PIT IS FOR USE IN MEDIANS AND TABLE DRAINS. IT SHALL NOT BE USED IN ROADWAYS, FOOTPATHS OR BICYCLE PATHS.
- GRATE TO BE CLASS B IN ACCORDANCE WITH AS 3996 AND BIKE SAFE.
- GRATE FRAME TO BE CONSTRUCTED FROM 75x50x5mm MS ANGLE. CORNER JOINTS SHALL BE WELDED ON UNDERSIDE OF HORIZONTAL LEG AND ON THE INSIDE OF THE VERTICAL LEG WITH SIZE 5 FILLETS.
- ANCHOR SPACING NOT TO EXCEED 400mm.
- EXPOSED CONCRETE EDGES TO HAVE 10x10 CHAMFERS.
- PIT REINFORCEMENT TO BE IN ACCORDANCE WITH SD5-8 & SD5-9.
- GRATES AND FRAMES TO BE HOT DIPPED GALVANIZED STEEL.
- ALL PITS TO BE LOCATED A MINIMUM OF 1m CLEAR OF VEHICLE CROSSINGS.
- ALL SECTIONS OF GRATE TO BE BOLTED DOWN.
- CONCRETE STRENGTH OF 32MPa AT 28 DAYS.

REV	AMENDMENTS	APPROVAL	DATE
B	MINOR DRAFTING MODIFICATIONS		13-05-07
C	UPDATED TO REFLECT CURRENT STANDARDS	M.BRIGANDI	21-05-24

**GRATED PIT
DEPRESSED STEEL GRATE FOR
MEDIANS AND TABLE DRAINS**



45 PRINCES HIGHWAY
WERRIBEE, VIC 3030

TEL: 1300 023 411
wyndham.vic.gov.au

CAD FILE: SD5-1.DWG
DRAWN DATE: FEB 2024
REVISION: C
DRAWING NO.: SD5-1

GENERAL NOTES:

- DRAWINGS ARE NOT TO SCALE.
- ALL MEASUREMENTS ARE IN MILLIMETERS UNLESS OTHERWISE STATED.
- FOR UP TO DATE DRAWINGS PLEASE CHECK WYNDHAM CITY COUNCIL WEBSITE.
- ALL STANDARD DRAWINGS TO BE USED IN CONJUNCTION WITH SD1-1 (STANDARD DRAWINGS CONDITIONS OF USE).