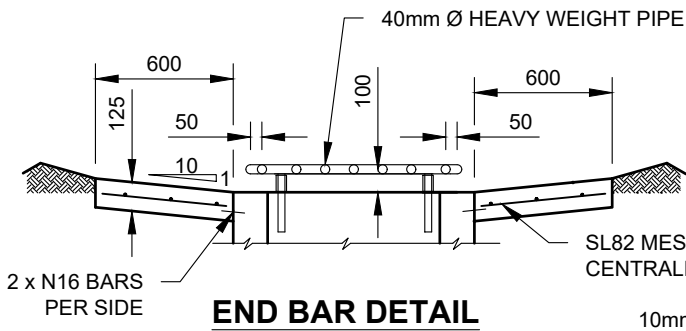
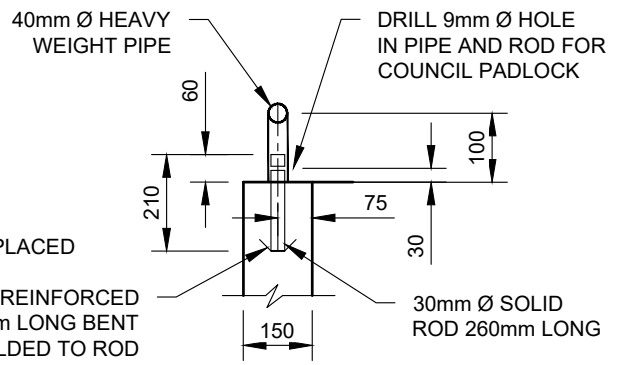


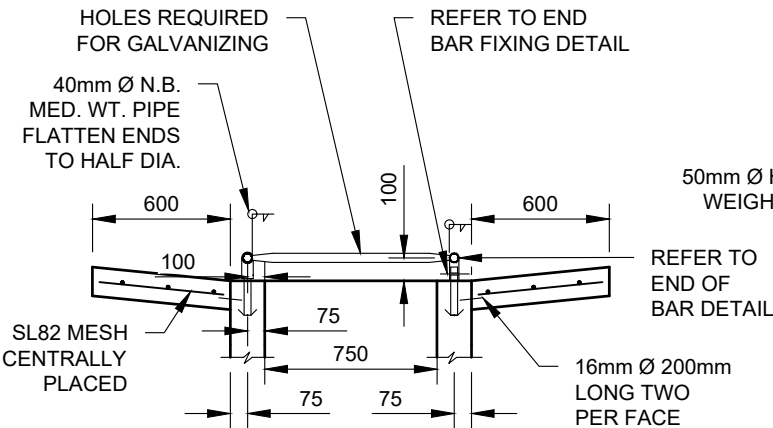
Drawing name: M:\Engineering Services\Engineering Design Projects\RESOURCE References\WCC Standard Drawings\SD5-3.dwg (28 May, 2024)



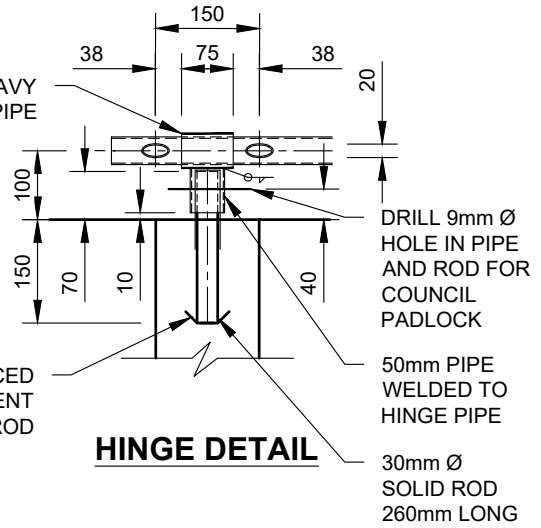
**END BAR DETAIL**



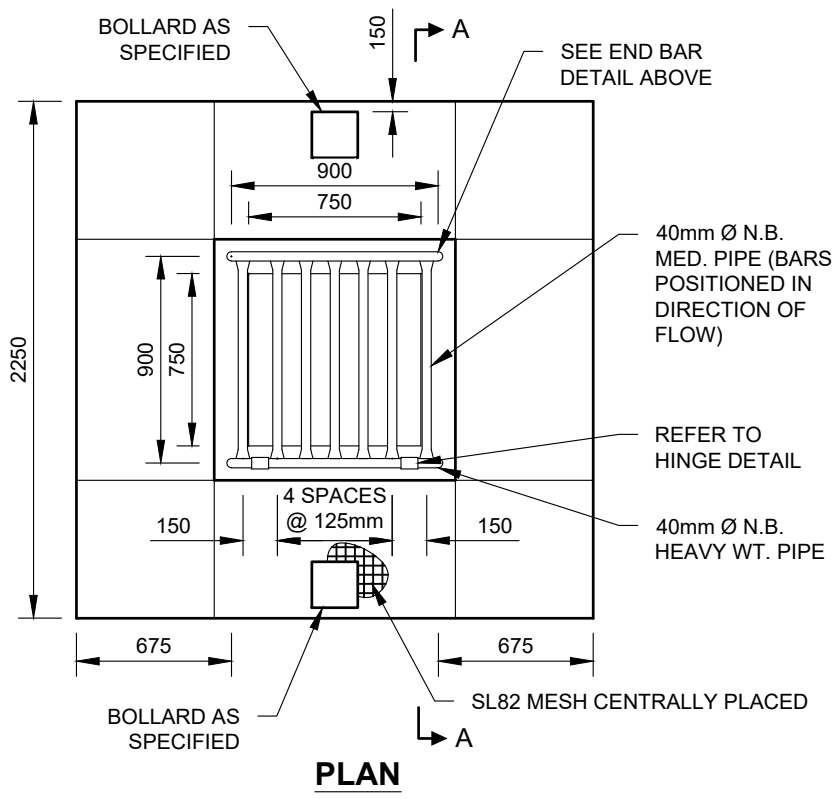
**END BAR FIXING DETAIL**



**SECTION A-A**



**HINGE DETAIL**



**PLAN**

- NOTES:**
1. ALL WELDS TO BE 6mm FILLET UNLESS SHOWN OTHERWISE.
  2. AFTER FABRICATION GRILLE AND FIXING ROD TO BE HOT DIPPED GALVANIZED STEEL.
  3. PADLOCKS TO BE PURCHASED FROM COUNCIL. (TYPE A5-101).
  4. PROVIDE 2 SQUARE TYPE BOLLARDS AROUND PIT IN APRON.
  5. TO BE LOCATED IN FLOOD-WAYS ONLY.
  6. CONCRETE STRENGTH OF 32MPa AT 28 DAYS.

REV	AMENDMENTS	APPROVAL	DATE
B	MINOR DRAFTING MODIFICATIONS		13-05-07
C	UPDATED TO REFLECT CURRENT STANDARDS	M.BRIGANDI	21-05-24

**RAISED PIT GRILL  
FOR PITS OPENING - 750 X 750  
FLOODWAYS**



45 PRINCES HIGHWAY  
WERRIBEE, VIC 3030

TEL: 1300 023 411  
wyndham.vic.gov.au

CAD FILE: SD5-3.DWG
DRAWN DATE: FEB 2024
REVISION: C
DRAWING NO.: <b>SD5-3</b>

**GENERAL NOTES:**

- DRAWINGS ARE NOT TO SCALE.
- ALL MEASUREMENTS ARE IN MILLIMETERS UNLESS OTHERWISE STATED.
- FOR UP TO DATE DRAWINGS PLEASE CHECK WYNDHAM CITY COUNCIL WEBSITE.
- ALL STANDARD DRAWINGS TO BE USED IN CONJUNCTION WITH SD1-1 (STANDARD DRAWINGS CONDITIONS OF USE).