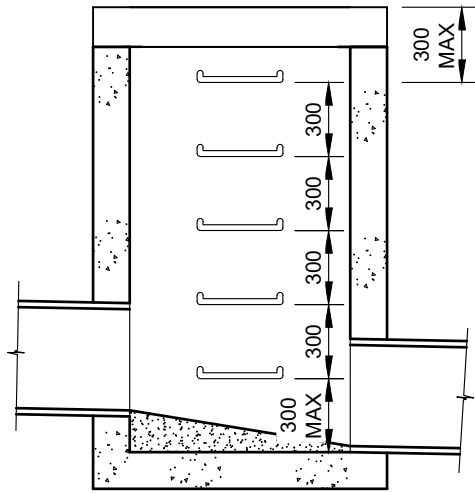
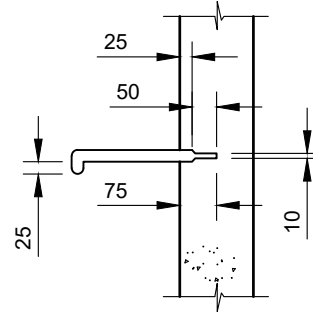


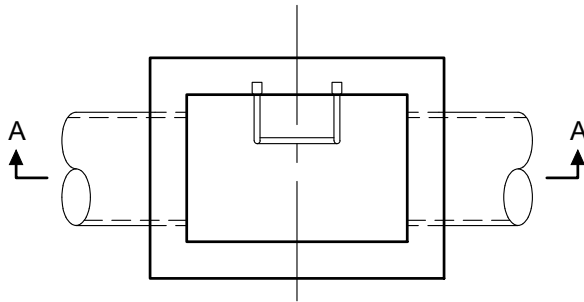
Drawing name: M:\Engineering Services\Engineering Design Projects\RESOURCE References\WCC Standard Drawings\SD5-7.dwg (28 May, 2024)



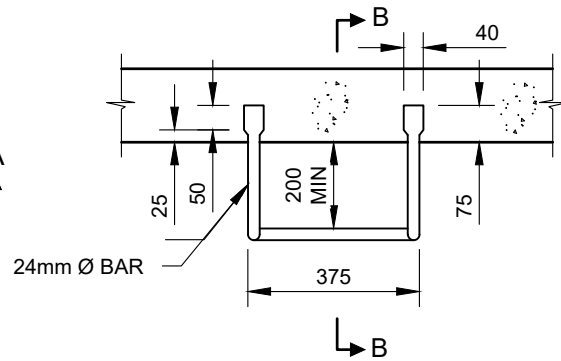
SECTION A-A



SECTION B-B



PLAN



STEP IRON DETAILS

NOTES :

1. PITS DEEPER THAN 1000mm TO BE FITTED WITH STEP IRONS.
2. STEP IRONS TO BE LOCATED:
 - DIRECTLY BELOW THE OPENING IN THE COVER.
 - DESIRABLY ON A WALL WITHOUT PIPE OPENINGS.
 - DESIRABLY ON THE WIDEST SIDE OF PIT.
 - STEP IRONS CHANGING PIT FACE ARE TO BE PROVIDED WITH 1.2m OVERLAP.
3. STEP IRONS TO BE HOT DIP GALVANIZED TO AS4680 AND TO BE STRUCTURAL GRADE 250 IN ACCORDANCE WITH AS3679. ALL EDGES ARE TO BE ROUNDED.
4. GATIC PS2-PF POLYPROPYLENE STEPS (OR APPROVED EQUIVALENT) MAY BE USED AND INSTALLED ACCORDING TO THE MANUFACTURERS SPECIFICATIONS.

REV	AMENDMENTS	APPROVAL	DATE
B	MINOR DRAFTING MODIFICATIONS		24-05-07
C	UPDATED TO REFLECT CURRENT STANDARDS	M.BRIGANDI	21-05-24

STEP IRON DETAILS		CAD FILE: SD5-7.DWG
		DRAWN DATE: FEB 2024
		REVISION: C
		DRAWING NO.: SD5-7
45 PRINCES HIGHWAY WERRIBEE, VIC 3030		TEL: 1300 023 411 wyndham.vic.gov.au

GENERAL NOTES: -DRAWINGS ARE NOT TO SCALE.
 -ALL MEASUREMENTS ARE IN MILLIMETERS UNLESS OTHERWISE STATED.
 -FOR UP TO DATE DRAWINGS PLEASE CHECK WYNDHAM CITY COUNCIL WEBSITE.
 -ALL STANDARD DRAWINGS TO BE USED IN CONJUNCTION WITH SD1-1 (STANDARD DRAWINGS CONDITIONS OF USE).