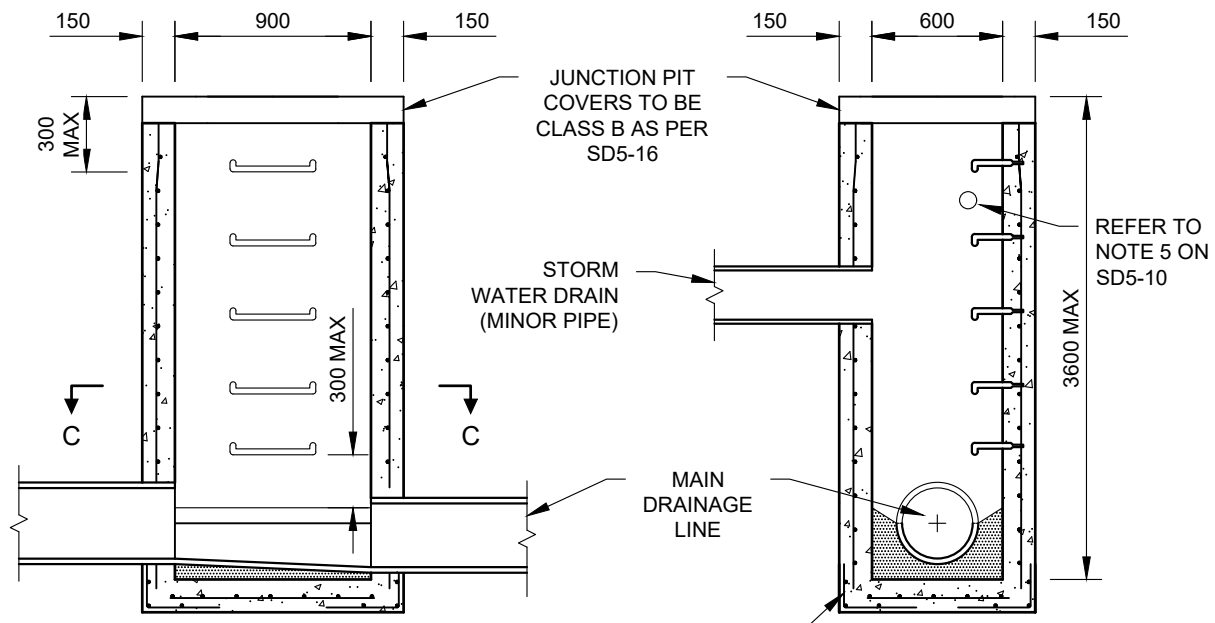
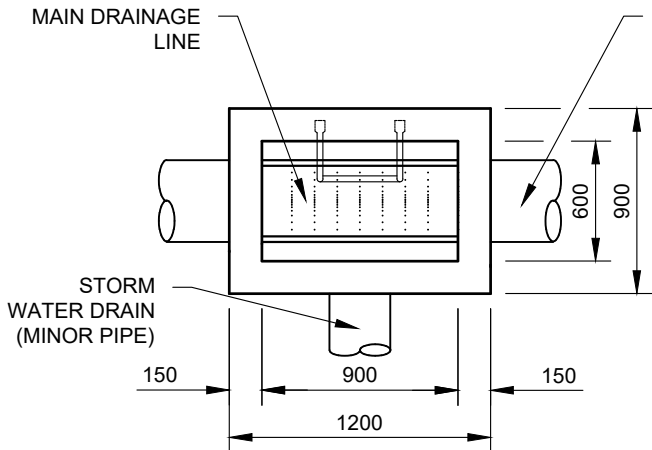


Drawing name: M:\Engineering Services\Engineering Design Projects\RESOURCE References\WCC Standard Drawings\SD5-8.dwg (28 May, 2024)

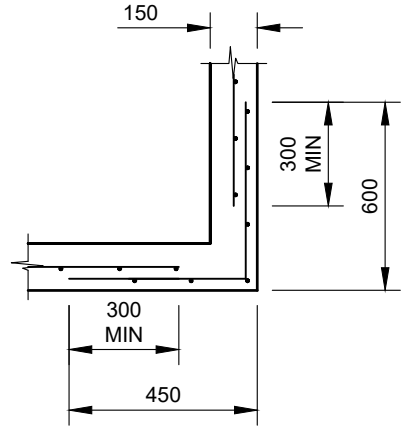


SECTION A-A

SECTION B-B

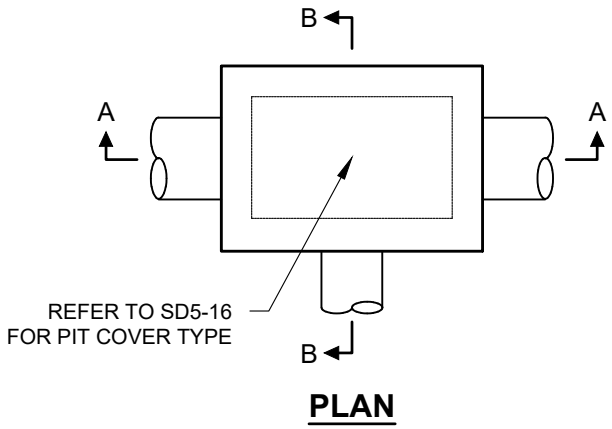


SECTION C-C



CORNER DETAILS (PLAN VIEW)


NOTES
1. REFER TO NOTES 1-15 ON SD5-10.



PLAN

REV	AMENDMENTS	APPROVAL	DATE
B	MINOR DRAFTING MODIFICATIONS		24-05-07
C	UPDATED TO REFLECT CURRENT STANDARDS	M.BRIGANDI	21-05-24

**STORM WATER JUNCTION PIT
FOR PIPES UP TO 525mm DIAMETER
AND 3600mm MAXIMUM DEPTH**



45 PRINCES HIGHWAY
WERRIBEE, VIC 3030

TEL: 1300 023 411
wyndham.vic.gov.au

CAD FILE: SD5-8.DWG
DRAWN DATE: FEB 2024
REVISION: C
DRAWING NO.: SD5-8

GENERAL NOTES: -DRAWINGS ARE NOT TO SCALE.
-ALL MEASUREMENTS ARE IN MILLIMETERS UNLESS OTHERWISE STATED.
-FOR UP TO DATE DRAWINGS PLEASE CHECK WYNDHAM CITY COUNCIL WEBSITE.
-ALL STANDARD DRAWINGS TO BE USED IN CONJUNCTION WITH SD1-1 (STANDARD DRAWINGS CONDITIONS OF USE).