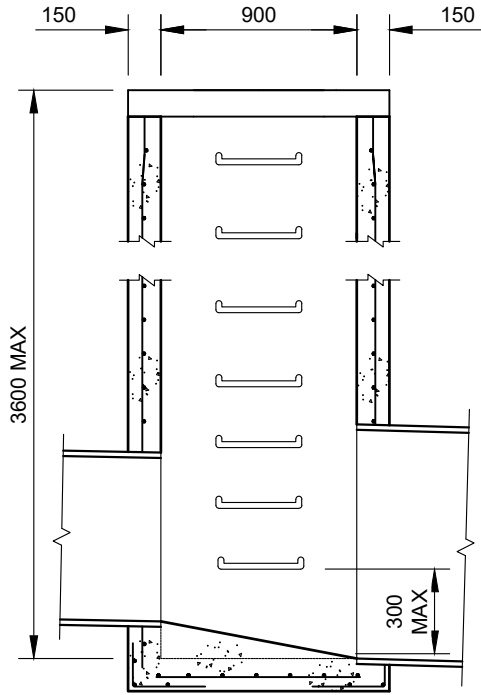
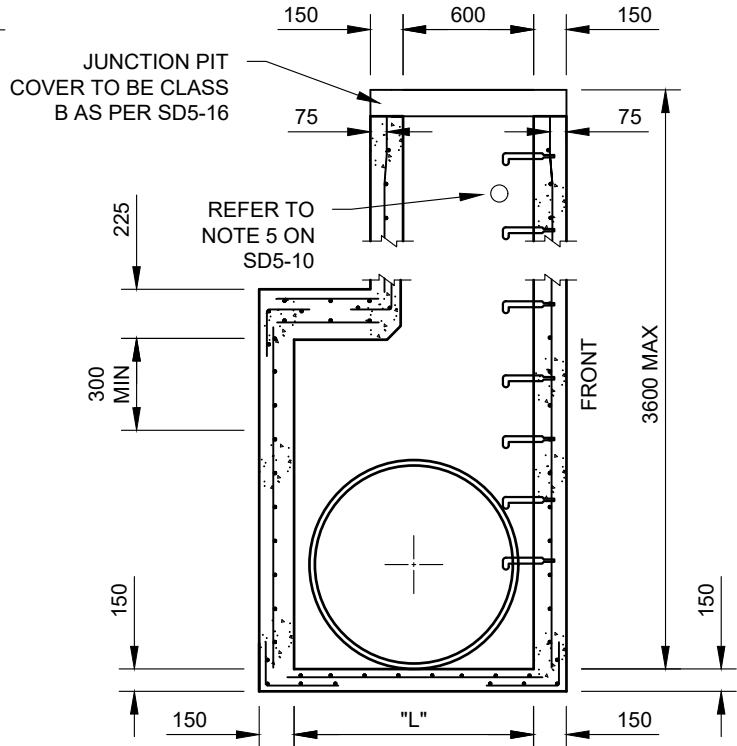


Drawing name: M:\Engineering Services\Engineering Design Projects\RESOURCE References\WCC Standard Drawings\SD5-9.dwg (28 May, 2024)



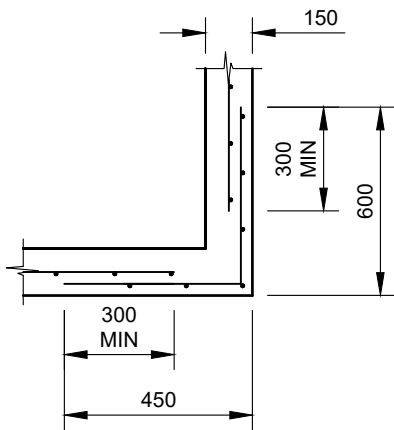
SECTION A - A



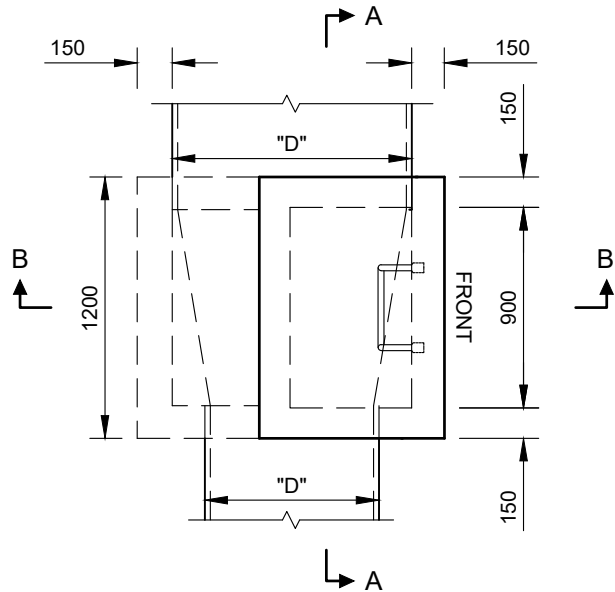
SECTION B - B

PIT LENGTH "L"	REINFORCEMENT
UP TO 1200	SL 92
1201-1800	RL 918
1801-2400	RL 1218

REINFORCEMENT DETAILS



CORNER DETAILS (PLAN VIEW)



PLAN

NOTES
1. REFER TO NOTES 1-17 ON SD5-10.

REV	AMENDMENTS	APPROVAL	DATE
B	MINOR DRAFTING MODIFICATIONS		28-05-07
C	UPDATED TO REFLECT CURRENT STANDARDS	M.BRIGANDI	21-05-24

**STORM WATER JUNCTION PIT
FOR PIPES 600mm DIAMETER AND
GREATER, WITH 3600mm MAXIMUM DEPTH**

45 PRINCES HIGHWAY
WERRIBEE, VIC 3030

TEL: 1300 023 411
wyndham.vic.gov.au

CAD FILE: SD5-9.DWG
DRAWN DATE: FEB 2024
REVISION: C
DRAWING NO.: SD5-9

GENERAL NOTES:
 -DRAWINGS ARE NOT TO SCALE.
 -ALL MEASUREMENTS ARE IN MILLIMETERS UNLESS OTHERWISE STATED.
 -FOR UP TO DATE DRAWINGS PLEASE CHECK WYNDHAM CITY COUNCIL WEBSITE.
 -ALL STANDARD DRAWINGS TO BE USED IN CONJUNCTION WITH SD1-1 (STANDARD DRAWINGS CONDITIONS OF USE).