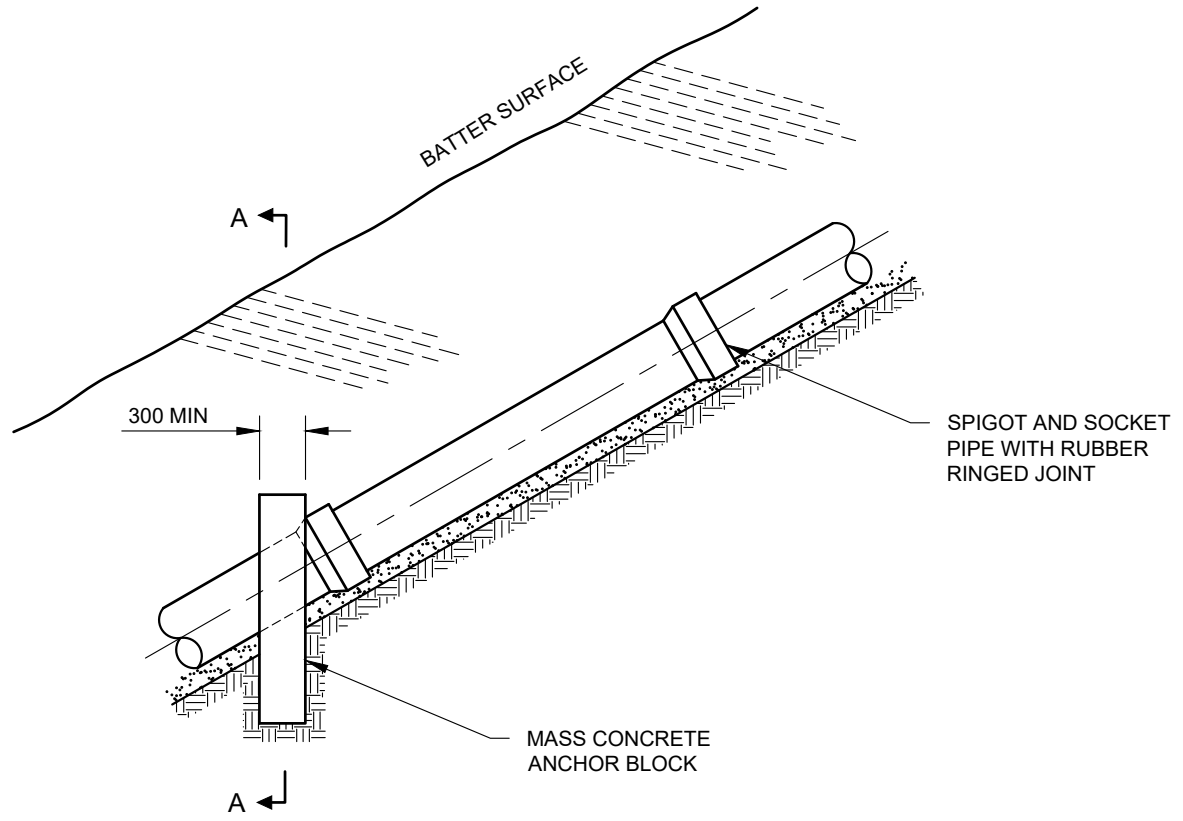
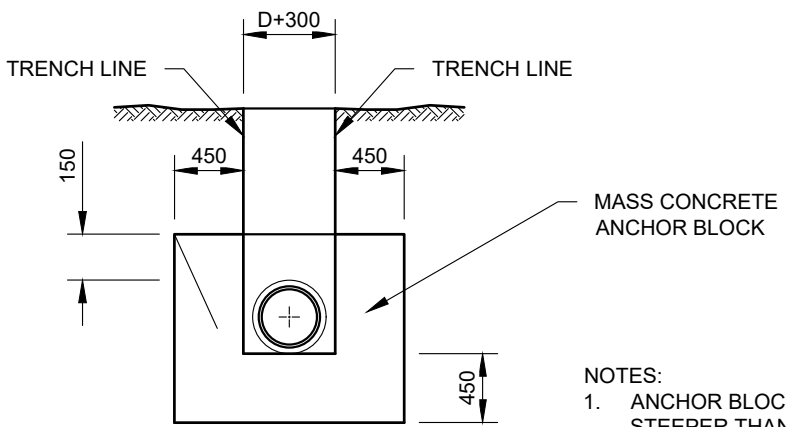


Drawing name: M:\Engineering Services\Engineering Design Projects\RESOURCE References\WCC Standard Drawings\SD6-11.dwg (28 May, 2024)



SECTION VIEW



SECTION A-A

- NOTES:**
1. ANCHOR BLOCKS TO BE USED WHERE THE PIPE SLOPE IS STEEPER THAN 1 IN 3 AND PIPE LENGTH IS GREATER THAN 15m.
 2. ANCHOR BLOCKS TO BE LOCATED APPROXIMATELY 2.4m FROM THE OUTLET END, AND;
 - (a) AT 6m SPACINGS FOR DRAINAGE LENGTH 15m - 30m.
 - (b) 10m SPACING FROM DRAINAGE LENGTHS 30m - 40m.
 - (c) 15m SPACING FOR DRAINAGE LENGTHS GREATER THAN 40m.
 3. CONCRETE STRENGTH OF 25MPa AT 28 DAYS.

REV	AMENDMENTS	APPROVAL	DATE
B	MINOR DRAFTING MODIFICATIONS		16-05-07
C	UPDATED TO REFLECT CURRENT STANDARDS	M.BRIGANDI	21-05-24

**ANCHOR BLOCK DETAILS FOR
PIPES UP TO 600 DIAMETER**

45 PRINCES HIGHWAY
WERRIBEE, VIC 3030

TEL: 1300 023 411
wyndham.vic.gov.au

CAD FILE: SD6-11.DWG
DRAWN DATE: FEB 2024
REVISION: C
DRAWING NO.: SD6-11

GENERAL NOTES:

- DRAWINGS ARE NOT TO SCALE.
- ALL MEASUREMENTS ARE IN MILLIMETERS UNLESS OTHERWISE STATED.
- FOR UP TO DATE DRAWINGS PLEASE CHECK WYNDHAM CITY COUNCIL WEBSITE.
- ALL STANDARD DRAWINGS TO BE USED IN CONJUNCTION WITH SD1-1 (STANDARD DRAWINGS CONDITIONS OF USE).