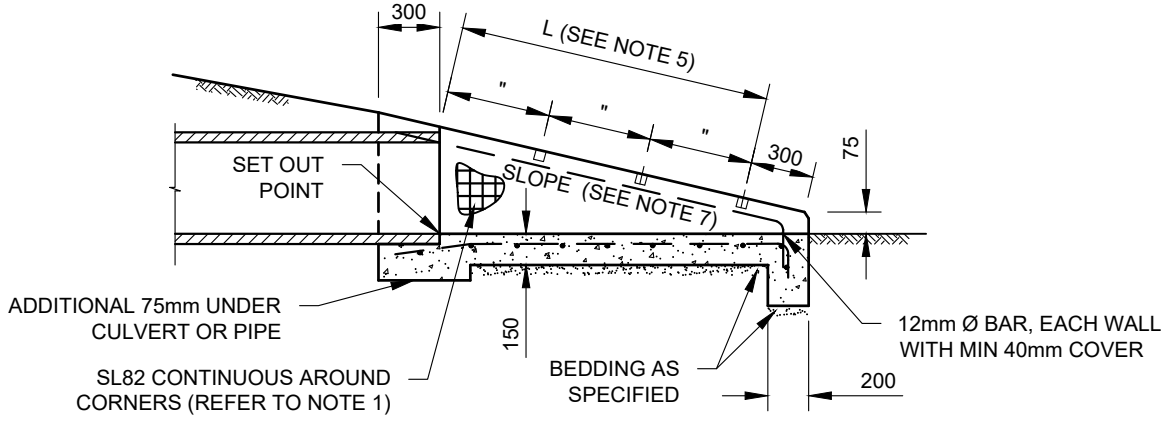
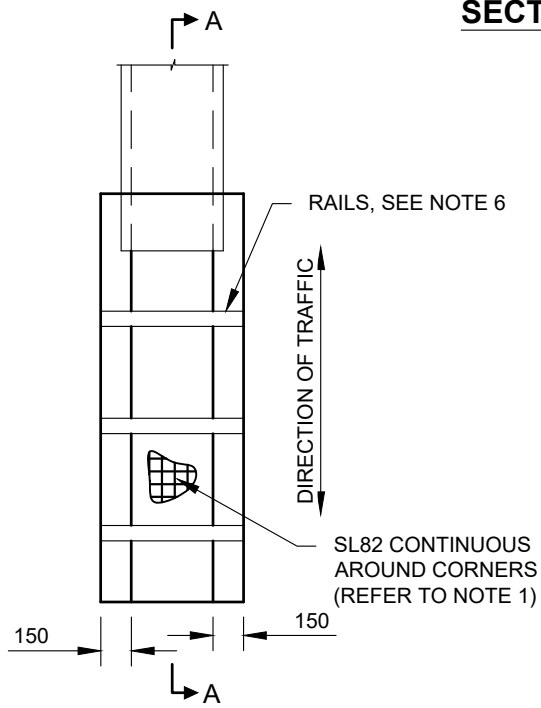


Drawing name: M:\Engineering Services\Engineering Design Projects\RESOURCE References\WCC Standard Drawings\SD6-14.dwg (28 May, 2024)

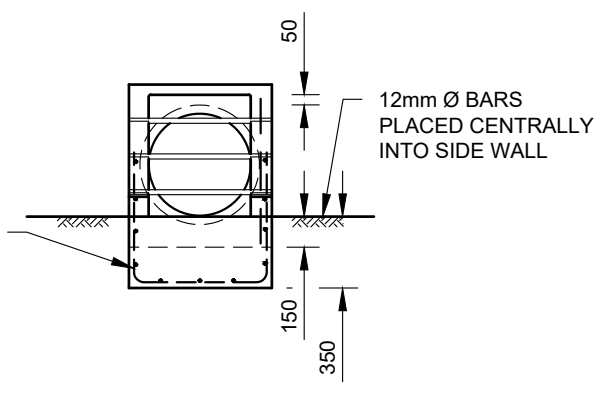


SECTION A-A



PLAN

L (mm)	TOTAL NUMBER OF RAILS
100 - 600	1
601 - 1200	2
1201 - 1800	3
1801 - 2400	4



END ELEVATION

NOTES:

1. REINFORCEMENT, SL82 UNLESS OTHERWISE SPECIFIED, TO BE CONTINUOUS AROUND CORNERS AND LOCATED AS SHOWN. CLEAR COVER 50mm MIN. LAPS: FABRICS 300mm MIN BARS 25mm x 8mm DIAMETER MIN.
2. DISTRIBUTION BARS 12mm Ø AT 200mm CENTRES.
3. CONCRETE TO BE NORMAL-CLASS N32 STANDARD STRENGTH GRADE OR HIGHER COMPLYING WITH THE REQUIREMENTS OF AS 1379. EXPOSURE CLASSIFICATIONS UP TO AND INCLUDING B1.
4. EXPOSED EDGES TO HAVE 20mm x 20mm CHAMFERS.
5. RAILS WITHIN LENGTH "L" SHALL BE EVENLY SPACED. THE MAXIMUM SPACING SHALL NOT EXCEED 600mm.
6. RAILS ARE 60.3mm DIAMETER GALVANISED TUBES 5.4mm THICK. THESE ARE TO BE GROUTED INTO THE SLOTS IN THE WALLS.
7. SLOPE OF ENDWALL TO MATCH BATTER SLOPE. MAXIMUM SLOPE 1 IN 6.
8. ENDWALLS TO BE CONSTRUCTED IN ACCORDANCE WITH THE RELEVANT PROVISIONS OF AS 3600.

REV	AMENDMENTS	APPROVAL	DATE
B	MINOR DRAFTING MODIFICATIONS, DELETED NOTE 8		16-05-07
C	MINOR DRAFTING MODIFICATIONS		09-12-09
D	UPDATED TO REFLECT CURRENT STANDARDS	M.BRIGANDI	21-05-24

DRIVEABLE CULVERT ENDWALL
(PIPE CULVERT UP TO 600mm Ø AND BOX CULVERTS UP TO 600mm Ø WIDE)

45 PRINCES HIGHWAY
WERRIBEE, VIC 3030

TEL: 1300 023 411
wyndham.vic.gov.au

CAD FILE: SD6-14.DWG
DRAWN DATE: FEB 2024
REVISION: D
DRAWING NO.: SD6-14

GENERAL NOTES:

- DRAWINGS ARE NOT TO SCALE.
- ALL MEASUREMENTS ARE IN MILLIMETERS UNLESS OTHERWISE STATED.
- FOR UP TO DATE DRAWINGS PLEASE CHECK WYNDHAM CITY COUNCIL WEBSITE.
- ALL STANDARD DRAWINGS TO BE USED IN CONJUNCTION WITH SD1-1 (STANDARD DRAWINGS CONDITIONS OF USE).