



# Waste & Recycling Guide



wyndhamcity  
*city. coast. country*



## Our Vision

Let's all do our bit to keep waste out of landfill. Recycling right keeps our city clean and green. The long term vision is to see 90% of the waste generated in Wyndham households diverted away from landfill through improved recycling and servicing.



**90%**  
Diversion

## Bin Collection

[digital.wyndham.vic.gov.au/myWyndham/](https://digital.wyndham.vic.gov.au/myWyndham/)

Place your bins out before 6am on the day of collection. To find out your bin collection day visit [digital.wyndham.vic.gov.au/myWyndham/](https://digital.wyndham.vic.gov.au/myWyndham/), add your address and click on the house symbol. It is important that your recycling and green waste bins are put out on the correct day, as they are collected on alternate weeks.

Once emptied, please collect and return to your home. Note bins will not be collected on Good Friday and Christmas Day. Scheduled collection for these days will occur the next day.

If you have any questions please call 1300 023 411.





**NO X**



Remember, everything you place in this bin goes to landfill, so it's important to reduce, reuse & recycle as much as possible





# Recycling Fortnightly Service

[www.wyndham.vic.gov.au/recycleright](http://www.wyndham.vic.gov.au/recycleright)

Ensure items are loose so they can be sorted and recycled at the Recycling Facility. Recycling right allows natural resources to be reused again. Empty item contents, but no need to rinse. No plastic bags.



**NO X**



# Green Waste Fortnightly Service (Optional) [wyndham.vic.gov.au/services/waste-recycling/bin-requests](http://wyndham.vic.gov.au/services/waste-recycling/bin-requests)

This is an optional service with an annual fee.  
Please book in at least a week or two in advance.



## Compost Bins & Worm Farms

[www.wyndham.wormlovers.com.au](http://www.wyndham.wormlovers.com.au)



### Did you know you can cut your garbage in half by recycling your food scraps at home?

Wyndham City's Wormlovers Subsidy Program provides up to 50% off compost bins or worm farms. To find out more visit [www.wyndham.wormlovers.com.au](http://www.wyndham.wormlovers.com.au)

Worm Farms and Compost bins provide an easy way to reduce waste sent to landfill, cutting down on greenhouse gases and returning nutrients back into the soil.





## After Collection - Where does it go?

### Recycling Bin

Truck delivers recyclables to the VISY Recovery Facility.



The recyclables are sorted into different material types by hand and machinery.



These sorted materials are then reprocessed into new products and packaging.

### Green Waste Bin

Truck delivers green waste to the Veolia composting facility in Sunbury.



This organic waste is sorted and then processed into nutrient rich compost.



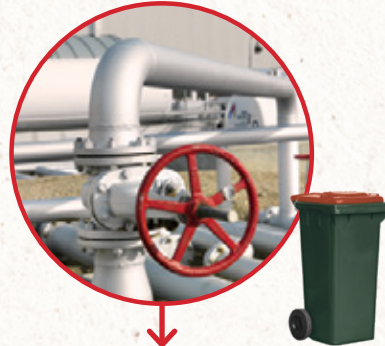
This compost is used in Council's local parks and gardens, and in farms across the State.

### Garbage Bin

Truck delivers garbage to the Werribee landfill, the Refuse Disposal Facility.



This waste is buried underground and does not get to be reused.



Garbage in landfill produces methane gas contributing to climate change. The Refuse Disposal Facility captures some of this gas for energy.



## Hard and Green Waste Collection Service

[www.wyndham.vic.gov.au/bookhardwaste](http://www.wyndham.vic.gov.au/bookhardwaste)

Wyndham City offers most households 3 free hard and green waste collection services each financial year.

You need to call to book a collection day at least 3 weeks in advance. To book call **1300 023 411**.

### Waste Disposal Vouchers

Hard Waste Collections help to de-clutter our homes, keep our streets clean of illegal dumping and promotes re-use and recycling.

Residents can now exchange hard and green waste booked collection entitlements for Waste Disposal Vouchers to use at the Refuse Disposal Facility at Wests Road, Werribee. For further information please check the link or the QR Code provided.



## Report Litter

[www.wyndham.vic.gov.au/submit-customer-service-request](http://www.wyndham.vic.gov.au/submit-customer-service-request)

### What should you do if you see someone litter?

Report littering or illegal dumping, by telling us what was littered, where, when and by whom (car registration or photo if possible).

This maximises Council's chance of being able to fine the offender and helps reduce litter in our local area.

Wyndham City also uses CCTV surveillance in some instances to help reduce illegal dumping.





Residents are encouraged to recycle as much of their bulk waste at the Waste & Recycling Transfer Station to avoid it being sent to landfill. All items must be separated and placed into the appropriate bins in order to be recycled. The Transfer Station is located after the weigh bridge at the landfill.

## The Refuse Disposal Facility

470 Wests Rd, Werribee  
Ph: 1300 023 411

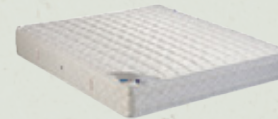
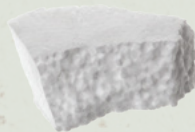
**Open:** Weekdays: 8am-4pm, Saturdays, Sundays,  
Public Holidays: 8.30am - 4pm  
**Closed:** Christmas Day, New Years Day, Good Friday



### FREE DROP-OFF



### CHARGES APPLY (\$)



Rate payers also receive 1 token for the Refuse Disposal Facility annually



Chemicals such as petrol, thinners and acetone cannot be disposed of at the Transfer Station, visit [www.sustainability.vic.gov.au/detoxyourhome](http://www.sustainability.vic.gov.au/detoxyourhome) for safe disposal options near you.



Discounts apply for separated green waste disposal at the Transfer Station.



# Recycling Stations

Wyndham City has its own Community Recycling Stations for some common household items including: batteries, printer cartridges, CD & DVD's, light globes, mobile phones & X-Rays.



These Recycling Stations are located at various community centres, as well as the Civic Centre. Do not place anything other than the specified item into each of the bins.



# Other Recycling Options

## Reusable goods – Charity Shop

Drop good quality items off at your nearest charity store during opening hours. Some charities also pick up from your home. Please do not place any goods on public land.

## E-waste and Clothing Drop Off Hubs

Electronic waste (e-waste) and clothing can be reused and recycled in many ways, but not through kerbside bins. E-waste and clothing drop off hubs can be found in the carparks of several community centres around Wyndham. For specific locations see the website.

## Plastic Bags & Flexible Plastics

The collection of soft plastics at participating retailers has temporarily been put on hold. Please dispose of your soft plastics in your normal rubbish bin till further notice.

## Container Deposit Scheme

Wyndham now has several locations where containers such as cans and bottles can be dropped off to retrieve the 10c deposit. For more information see [mytomra.com.au/locations/vic-container-deposit-scheme/](http://mytomra.com.au/locations/vic-container-deposit-scheme/)

## Household Chemicals

Detox your Home is a free home chemical recycling service that is safe for you and the environment. Take your chemicals to your closest free drop off event.

To find out where, when and how to register, go to [www.sustainability.vic.gov.au/detoxmobile](http://www.sustainability.vic.gov.au/detoxmobile) or call **1300 363 744**.

# Reduce Your Waste

The best thing you can do to reduce your waste is to avoid single use plastic, recycle as much as possible and only buy things you need. Other tips include:

- Use reusable green bags, keep cups and water bottles
- Join the nude food movement
- Use reusable cloth nappies
- Buy second-hand
- Say no to junk mail
- Avoid items with lots of packaging
- Take the Buy Nothing New challenge
- Use a worm farm or compost bin
- Participate in regular local litter clean ups







## Interactive Residential Waste Guide



**Before looking to dispose of items, please think how you could reduce the amount of waste you are creating and reuse items whenever possible.**

For further information and a full list of items and goods, please check [www.wyndham.vic.gov.au/waste-guide](http://www.wyndham.vic.gov.au/waste-guide)  
Please remember, if you cannot find an item listed, or need further information, please contact Council's Waste Education Team on [wastewise@wyndham.vic.gov.au](mailto:wastewise@wyndham.vic.gov.au) or 1300 023 411.



We need your help with residential bin collections, please note overflowing, damaged or bins left out too long, can all increase the amount of litter in our streets, entering our waterways.







# GREEN Living

## Stay in Touch

**Enewsletter:** Green Living in Wyndham  
**Website:** [www.wyndham.vic.gov.au](http://www.wyndham.vic.gov.au)  
**Email:** [mail@wyndham.vic.gov.au](mailto:mail@wyndham.vic.gov.au)  
**Phone:** 1300 023 411



Call 131 450  
for Translating and  
Interpreting Services

This is printed on 100% post consumer  
recycled paper and using chlorine free ink.