

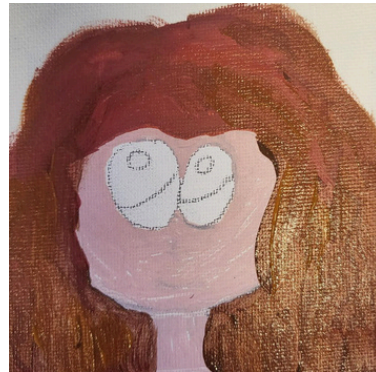
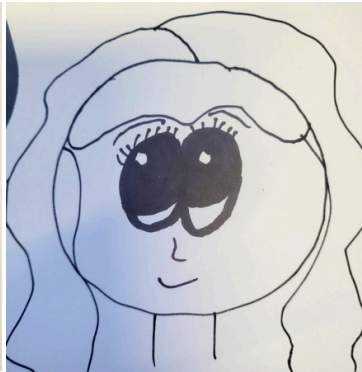
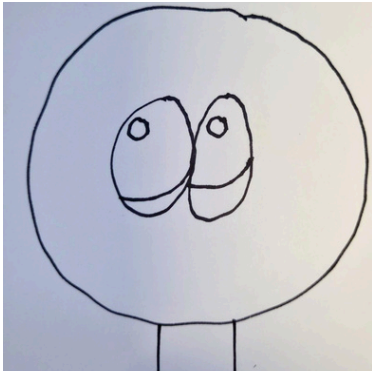
Kawaii Mini Self Portrait

What you need:

- Mini canvas
- Paint pens
- Grey lead pencil
- Eraser

What to do:

1. Using the grey lead pencil, lightly sketch out the design of your portrait. Use the eraser to rub out any mistakes. Don't press too heavy with the pencil otherwise it will show through the paint.
2. To draw the face, start with a circle. Add two lines for the neck.
3. Draw the eyes big and round in the middle of the face. To make the eyes look like they are shining add another small circle near the top left corner, plus a curved line near the bottom of the eye.
4. Sketch in the hair and a small nose and mouth.
5. Now time to paint! Start with the skin, then paint the hair. If the paint is thin, wait for it to dry and paint another layer.
6. Once that is dry, add in the eyes, nose, mouth, eyelashes and eyebrows. Add in other details as well like ears, jewellery, glasses or a headpiece.



Use black to outline everything for a pop art or comic book cartoon style.



Show us what you have made on the [Kids Creations Gallery](#).