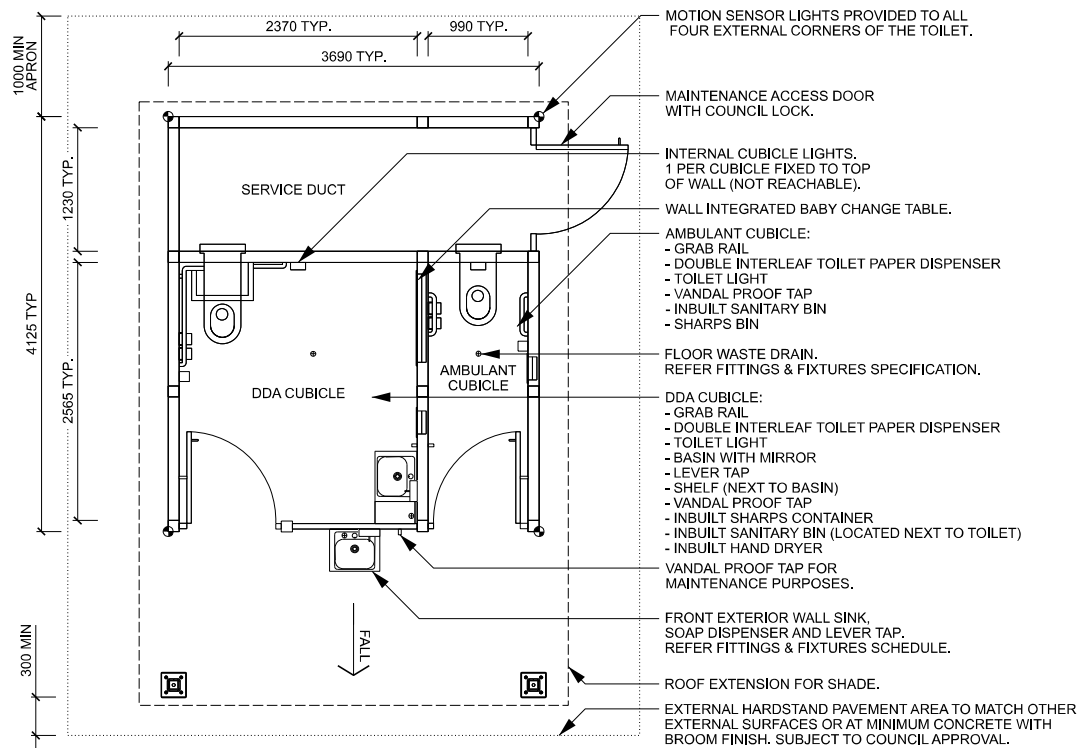
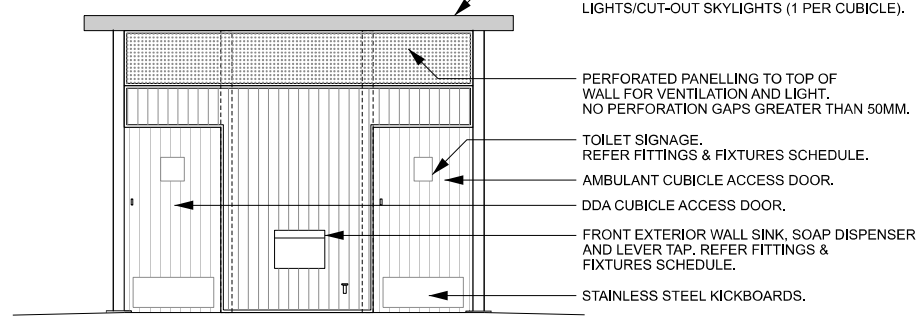


SUPPLIER: TERRAIN GROUP OR APPROVED SIMILAR.

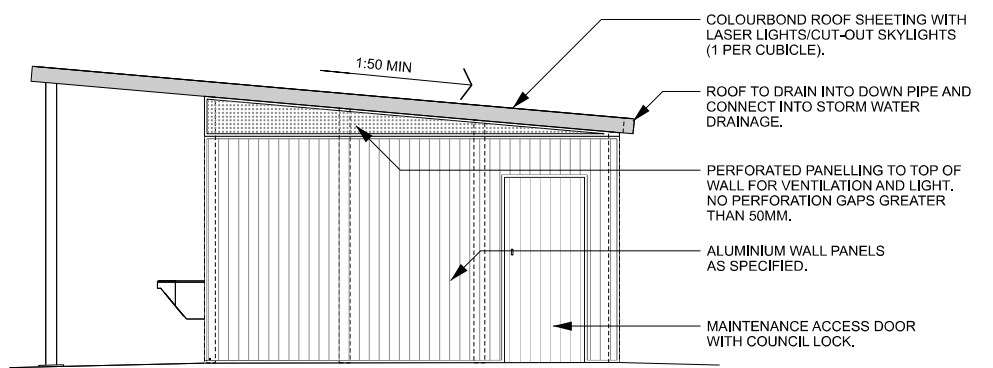


- MOTION SENSOR LIGHTS PROVIDED TO ALL FOUR EXTERNAL CORNERS OF THE TOILET.
- MAINTENANCE ACCESS DOOR WITH COUNCIL LOCK.
- INTERNAL CUBICLE LIGHTS. 1 PER CUBICLE FIXED TO TOP OF WALL (NOT REACHABLE).
- WALL INTEGRATED BABY CHANGE TABLE.
- AMBULANT CUBICLE:
 - GRAB RAIL
 - DOUBLE INTERLEAF TOILET PAPER DISPENSER
 - TOILET LIGHT
 - VANDAL PROOF TAP
 - INBUILT SANITARY BIN
 - SHARPS BIN
- FLOOR WASTE DRAIN. REFER FITTINGS & FIXTURES SPECIFICATION.
- DDA CUBICLE:
 - GRAB RAIL
 - DOUBLE INTERLEAF TOILET PAPER DISPENSER
 - TOILET LIGHT
 - BASIN WITH MIRROR
 - LEVER TAP
 - SHELF (NEXT TO BASIN)
 - VANDAL PROOF TAP
 - INBUILT SHARPS CONTAINER
 - INBUILT SANITARY BIN (LOCATED NEXT TO TOILET)
 - INBUILT HAND DRYER
- VANDAL PROOF TAP FOR MAINTENANCE PURPOSES.
- FRONT EXTERIOR WALL SINK, SOAP DISPENSER AND LEVER TAP. REFER FITTINGS & FIXTURES SCHEDULE.
- ROOF EXTENSION FOR SHADE.
- EXTERNAL HARDSTAND PAVEMENT AREA TO MATCH OTHER EXTERNAL SURFACES OR AT MINIMUM CONCRETE WITH BROOM FINISH. SUBJECT TO COUNCIL APPROVAL.

1 PARK TOILET TYPICAL LAYOUT PLAN



2 PARK TOILET TYPICAL FRONT ELEVATION



3 PARK TOILET TYPICAL SIDE ELEVATION

REV.	DESCRIPTION	DATE	DRN	CHKD
1	PRELIMINARY	14.07.23	M.M.	R.D.
2	PRELIMINARY	28.08.23	M.M.	J.G.
3	PRELIMINARY	22.11.23	S.M.	R.D.
4	PRELIMINARY	12.12.23	S.M.	R.D.
5	COUNCIL ISSUE	12.07.24	M.M.	R.D.

NOTES

- ALL MEASUREMENTS ARE IN MILLIMETRES UNLESS OTHERWISE STATED.
- REFER WYNDHAM CITY COUNCIL WEBSITE TO ENSURE DRAWINGS ARE THE LATEST REVISION.
- DRAWINGS ARE CONCEPT ONLY AND NOT SPECIFIC TO ANY SITE OR SITE CONDITIONS.
- DRAWINGS CONTAIN TYPICAL ENGINEERING DETAIL FOR INFORMATION ONLY AND WILL REQUIRE PROJECT AND SITE SPECIFIC STRUCTURAL ENGINEERING AND OR SHOP DRAWINGS.
- DRAWINGS WILL BE SUBJECT TO CHANGE THROUGHOUT DESIGN AND CONSTRUCTION PROCESS.
- OVERALL LAYOUT, SIZE AND THEME WILL NOT CHANGE.
- THE DESIGN ASSUMES THAT THE DESIGN WILL BE DEVELOPED AND CONSTRUCTED BY A SUITABLY QUALIFIED CONTRACTOR WITH MINIMUM 10 YEARS RELEVANT INDUSTRY EXPERIENCE.



STANDARD DETAIL - LANDSCAPE
OPEN SPACE PARK STRUCTURES
PUBLIC TOILET
SHEET 1 OF 3

STATUS	COUNCIL ISSUE	NOT FOR CONSTRUCTION
SCALE		DATE
AS SHOWN		14.07.2023
DWG No.		REV
OS 101A		5

External Finishes Schedule			
Item	Material	Finish	Alternative Finish
Walls	Aluminium	Preferred Finish: Exterior walls and panelling to be anodised or powder coated aluminium. Colour Options: Woodland Grey, Basalt, Dune or Monument. Walls to include perforated mesh to top of walls for ventilation and light. No perforation gaps greater than 50mm. Walls to be reinforced behind all wall-fixed elements including grab rails, change tables, sinks and toilet etc.	N/A
Wall Framing	Aluminium	All framing components to be aluminium.	N/A
Posts	Powder coated steel	Preferred Finish: SHS powdercoated posts with bolt down fixings or insitu footings. Colour Options: Woodland Grey, Basalt, Dune or Monument.	Alternative Finish: 2 No. Hardwood timber posts with galvanised steel bolt down post anchor for roof awning. All internal posts to be powder coated SHS. All alternative finishes and materials are subject to Council review and approval.
Roof	Corrugated profile colorbond or similar and approved. 1 No. laser light/cut-out skylight per cubicle. Roof pitch to match shelter.	Colour Options: Woodland Grey, Basalt, Dune or Monument.	N/A
Fixings	Steel	All fixings to be stainless steel, galvanised or powder coated anti-vandal fixings. All exposed fixings to be capped.	N/A
Doors	Aluminium	Door restraint chain and mesh for extra support. Air flow under door. Blocker plate fixed internally at lock locations. Cubicle doors to open inwards. Maintenance door to open outwards. All doors to be gas strut self closing.	Alternative Finish: Door finish to match exterior wall treatment. All alternative finishes and materials are subject to Council review and approval.
Ground Surface	Hardstand Arco to match minimum dimensions shown on plans.	Finish - External handstand pavement area to match other external surfaces or at minimum concrete with light broom finish, finish to be compliant with Australian Slip Resistance Standards. Internal ground surfaces to fall towards floor waste drains. Subject to Council approval.	

GENERAL NOTES:

1. THIS STANDARD IS FOR DISTRICT LEVEL PARKS. REGIONAL LEVEL PARKS ARE TO BE BASED ON THIS STANDARD BUT CAN BE CUSTOM DESIGNED WITH ADDITIONAL CUBICLES AS PER COUNCIL'S PUBLIC TOILET POLICY AND APPROVED BY COUNCIL.
2. SHOP DRAWINGS TO BE PROVIDED AND APPROVED BY COUNCIL PRIOR TO MANUFACTURING AND INSTALLATION.
3. THE TOILET IS TO BE DDA COMPLIANT AND TO MEET AUSTRALIAN STANDARDS (AS1428.1).
4. A BUILDING PERMIT IS REQUIRED FOR NEW PUBLIC TOILETS. THE TOILET CONTRACTOR/SUPPLIER IS TO APPLY FOR COORDINATE BUILDING PERMIT AND ASSOCIATED WORKS, AND CAN APPLY THROUGH COUNCIL'S BUILDING SERVICES TEAM. THIS INCLUDES FACILITATING ANY INSPECTIONS OR HOLD POINTS REQUIRED BY COUNCIL.
5. REFER TO COUNCIL FITTINGS AND FIXTURE SCHEDULE.

INTERIOR NOTES:

1. WALLS ARE TO BE REINFORCED BEHIND ALL WALL-FIXED ELEMENTS INCLUDING GRAB RAILS, CHANGE TABLES, SINKS AND TOILET ETC.
2. ALL TOILET CISTERNS TO BE INTEGRATED AND CONCEALED INTO THE WALL.
3. BACK REST INTEGRATED INTO GRAB RAILS FOR DDA ACCESSIBLE TOILET. NO BACKREST TO AMBULANT TOILET.
4. POLISHED STAINLESS STEEL MIRROR FIXED TO WALL ABOVE BASIN.
5. ALL PIPEWORK AND SERVICES TO BE CONCEALED WITHIN WALLS.
6. VANDAL PROOF MAINTENANCE TAP TO BE PROVIDED IN EACH CUBICLE WITH REMOVABLE KEY OPERATION.

LOCKS AND DOORS NOTES:

1. COUNCIL A5101 LOCKS TO BE PROVIDED TO ALL DOORS FOR MANUAL LOCKING
2. CUBICLE DOORS TO HAVE AUTOMATED LOCKING SYSTEMS AND MANUAL USER OCCUPIED LOCKS. REFER TO FITTINGS AND FIXTURES SCHEDULE.
3. LOCKS ON DOORS TO BE LABELLED INTERNALLY FOR CLARITY OF USE
4. BLOCKER PLATE FIXED EXTERNALLY FOR DOOR LOCKS
5. KICKBOARDS TO BE PROVIDED TO THE BOTTOM OF ALL DOORS
6. DOORS TO TOILET CUBICLES TO OPEN INWARDS. MAINTENANCE DOOR TO OPEN OUTWARDS
7. SIGNAGE TO OUTSIDE OF ALL CUBICLE DOORS. REFER TO FITTINGS AND FIXTURES SCHEDULE.

REVISIONS

REV.	DESCRIPTION	DATE	DRN	CHKD
1	PRELIMINARY	14.07.23	M.M.	R.D.
2	PRELIMINARY	29.08.23	M.M.	J.G.
3	PRELIMINARY	22.11.23	S.M.	R.D.
4	PRELIMINARY	12.12.23	S.M.	R.D.
5	COUNCIL ISSUE	12.07.24	M.M.	R.D.

NOTES

- ALL MEASUREMENTS ARE IN MILLIMETRES UNLESS OTHERWISE STATED.
- REFER WYNDHAM CITY COUNCIL WEBSITE TO ENSURE DRAWINGS ARE THE LATEST REVISION.
- DRAWINGS ARE CONCEPT ONLY AND NOT SPECIFIC TO ANY SITE OR SITE CONDITIONS.
- DRAWINGS CONTAIN TYPICAL ENGINEERING DETAIL FOR INFORMATION ONLY AND WILL REQUIRE PROJECT AND SITE SPECIFIC STRUCTURAL ENGINEERING AND OR SHOP DRAWINGS.
- DRAWINGS WILL BE SUBJECT TO CHANGE THROUGHOUT DESIGN AND CONSTRUCTION PROCESS.
- OVERALL LAYOUT, SIZE AND THEME WILL NOT CHANGE.
- THE DESIGN ASSUMES THAT THE DESIGN WILL BE DEVELOPED AND CONSTRUCTED BY A SUITABLY QUALIFIED CONTRACTOR WITH MINIMUM 10 YEARS RELEVANT INDUSTRY EXPERIENCE.



STANDARD DETAIL - LANDSCAPE

**OPEN SPACE PARK STRUCTURES
PUBLIC TOILET
SHEET 2 OF 3**

STATUS COUNCIL ISSUE NOT FOR CONSTRUCTION

SCALE	DATE
AS SHOWN	14.07.2023
DWG No.	REV
OS 101B	5

Fittings & Fixtures Schedule					
Reference images	Item	Model/Details	Material	Notes	Alternative
Interior - To comply with Australian Standards (AS1428.1)					
	Toilet (DDA Compliant Cubical)	PCDS Centurion Accessible Pan with S-Trap	Stainless Steel	With plastic toilet seat and backrest to Australian Standards.	N/A
	Polyurethane Backrest with 90° RHS Grab Rail Set (DDA Compliant Cubical)	BTX-BRC-R90 wrap around grabrail & backrest	Stainless Steel & Polyurethane	Durable. Backrest to be integrated into the grabrail for DDA compliant cubicle.	N/A
	Basin (DDA Compliant Cubical)	HBDA Accessible Hand Basin	Stainless Steel	Wheelchair accessible basin, pipework to be concealed within walls.	N/A
	Ambulant Grab Rail	BTR-01-058 - S.S. 90° Ambulant Grab Rail	Stainless Steel		N/A
	Soap Dispenser	BTX-05-019 Horizontal Liquid Soap Dispenser	Stainless Steel	1 No. in DDA compliant cubical, above basin. Push style dispenser.	N/A
	Tapware	TW-9108 Timed Flow Water Tap	Stainless Steel	1 No. per basin. Vandal proof timed flow water tap.	N/A
	Baby Change Table (DDA Compliant Cubical)	ML8200SM Stainless Steel Surface Mounted Horizontal Baby Change Table	Exterior: Stainless Steel Interior: Plastic	Recessed into and flush with wall, wall to be reinforced.	N/A
	Toilet (Unisex Ambulant Cubical)	PCAMS Centurion Ambulant Pan with S-Trap.	Stainless Steel	With toilet seat.	N/A
	Shelf (DDA Compliant Cubical)	ML950-12 Utility Shelf, 300mmW x 105mmH x 127mmD	Stainless Steel	Durable/vandal proof to Australian Standards. Shelf to be provided adjacent to the sink in the DDA cubicle only.	N/A
	Cistern	Invisi Series II® Cistern - In duct/in wall/in ceiling - Single Flush	Standard Material	Integrated and concealed into wall, single or double (half and full) flush.	N/A
	Mirror	RBA8117-101 Single Sheet Reflective Polycarbonate Mirror 390mmW x 990mmH X 6mm thick.	Polished stainless steel	Fixed to wall above basin.	N/A
	Coat Hook	102_Hook-SCP	Stainless Steel	To be provided at the back of each door.	N/A

	Dual Toilet Roll Dispensers	BTX-06-039	Stainless Steel	Interleaf, dispensers, 2 No. dispensers per cubicle.	N/A
	Inbuilt Sharps Container		Stainless Steel	1 no. in each cubical. Emptying of sharp container to be added to EHO's list at handover. Alternatively, sharp chute installed to service duct wall of cubicles for access from service duct. To be considered and confirmed by Council.	N/A
	Inbuilt Sanitary Bin		Stainless Steel	1 no. in each cubical. Vandal proof, metal shell. Emptying of sanitary bin to be added to EHO's list at handover.	N/A
	Floor Waste Drain		Stainless Steel		N/A
	Pipework and Services		N/A	All to be concealed within walls and to be checked at hold points. Conduit to be provided for future electrical connections.	N/A
	Tap (Maintenance Washing)		Stainless Steel	Vandal proof tap with removable key operation, to be provided in each cubicle for washing down purposes.	N/A
	Floor		Concrete	Internal floor to be sealed and ensure falling to central drainage point. External floor falling away from structure. Concrete pad to toilet to provide a 1000mm apron to the service area side, 1500mm apron to the front of the toilet (cubicle entrance) and 300mm apron to remaining sides. Concrete to Council standard with medium broom finish to meet all relevant Aus standards for slip resistance in public toilets.	N/A
	Inbuilt Hand Dryer (DDA cubicle only)		Stainless Steel	Vandal proof, metal shell. Council to consider and confirm if hand dryer is to be inbuilt or	N/A
	Internal Walls		Aluminium	All internal walls to be aluminium - ensure internal wall extends to roof for continued barrier.	N/A
Lighting - To comply with Australian Standards (AS1198.3.1)					
	Internal Cubical Lights		LED	1 No. light to be provided per cubicle to the top of wall (not reachable). To provide additional lighting on dull days. Internal lights only activated between 5:00am and 9:00pm.	N/A
	Security Lighting		LED	Motion sensor lighting on all four external corners for security at night. Can be solar powered.	N/A

Exterior - To comply with Australian Standards (AS1428.1)					
	Basin	HBDA Accessible Hand Basin	Stainless Steel	Wheelchair accessible basin, pipework to be concealed within walls.	N/A
	Tapware	RBA1083-607 Water Saving Tap	Stainless Steel	Vandal proof lever tap with timer.	N/A
	Soap Dispenser	BTX-05-019 Horizontal Liquid Soap Dispenser	Stainless Steel	1 No. above external basin. Push style dispenser.	N/A
	Tap (Maintenance Washing)		Stainless Steel	Vandal proof tap with removable key operation, for washing down purposes.	N/A
	Services		N/A	Power required for lights and locking. Mains power preferred to ensure automated locking system is operational. Provisions for power for irrigation or events to be made in the storage/maintenance area if required. 2 No. conduits to be provided to service duct for future provisions.	N/A
Doors - To comply with Australian Standards (AS1428.1)					
	Automated Locking System	Lockwood Padde Series - Monitored Electromagnetic Locks		On both cubical doors. - Analogue magnetic lock. - Emergency release button inside each cubicle which opens the door and locks again once closed. - Compatible programming with daylight savings times (2 settings minimum).	N/A
	Manual Door Lock (user/vacant/engaged) Hardware			On both cubical doors, including service door, AS101, to be installed during manufacturing.	N/A
	Signage		Standard Material	Accessible signage on cubical doors, Unisex/DDA/Baby Change and Unisex Ambulant cubicle signage inc. Include Brail Sign for explanation of auto lock.	N/A
	Kickboards to doors		Stainless Steel	To be provided to all doors.	N/A
	Door Stopper (if required)		Standard Material		N/A
	Door Lock Labels		Standard Material	Locks on doors to be labelled internally for clarity of use.	N/A
	Handles		Stainless Steel	Door handles to be solid and accessible.	N/A

REV.	DESCRIPTION	DATE	DRN	CHKD	NOTES
1	PRELIMINARY	14.07.23	M.M.	R.D.	- ALL MEASUREMENTS ARE IN MILLIMETRES UNLESS OTHERWISE STATED.
2	PRELIMINARY	29.08.23	M.M.	J.G.	- REFER WYNDHAM CITY COUNCIL WEBSITE TO ENSURE DRAWINGS ARE THE LATEST REVISION.
3	PRELIMINARY	22.11.23	S.M.	R.D.	- DRAWINGS ARE CONCEPT ONLY AND NOT SPECIFIC TO ANY SITE OR SITE CONDITIONS.
4	PRELIMINARY	12.12.23	S.M.	R.D.	- DRAWINGS CONTAIN TYPICAL ENGINEERING DETAIL FOR INFORMATION ONLY AND WILL REQUIRE PROJECT AND SITE SPECIFIC STRUCTURAL ENGINEERING AND OR SHOP DRAWINGS.
5	COUNCIL ISSUE	12.07.24	M.M.	R.D.	- DRAWINGS WILL BE SUBJECT TO CHANGE THROUGHOUT DESIGN AND CONSTRUCTION PROCESS.
					- OVERALL LAYOUT, SIZE AND THEME WILL NOT CHANGE.
					- THE DESIGN ASSUMES THAT THE DESIGN WILL BE DEVELOPED AND CONSTRUCTED BY A SUITABLY QUALIFIED CONTRACTOR WITH MINIMUM 10 YEARS RELEVANT INDUSTRY EXPERIENCE.

NOTES

- ALL MEASUREMENTS ARE IN MILLIMETRES UNLESS OTHERWISE STATED.
- REFER WYNDHAM CITY COUNCIL WEBSITE TO ENSURE DRAWINGS ARE THE LATEST REVISION.
- DRAWINGS ARE CONCEPT ONLY AND NOT SPECIFIC TO ANY SITE OR SITE CONDITIONS.
- DRAWINGS CONTAIN TYPICAL ENGINEERING DETAIL FOR INFORMATION ONLY AND WILL REQUIRE PROJECT AND SITE SPECIFIC STRUCTURAL ENGINEERING AND OR SHOP DRAWINGS.
- DRAWINGS WILL BE SUBJECT TO CHANGE THROUGHOUT DESIGN AND CONSTRUCTION PROCESS.
- OVERALL LAYOUT, SIZE AND THEME WILL NOT CHANGE.
- THE DESIGN ASSUMES THAT THE DESIGN WILL BE DEVELOPED AND CONSTRUCTED BY A SUITABLY QUALIFIED CONTRACTOR WITH MINIMUM 10 YEARS RELEVANT INDUSTRY EXPERIENCE.

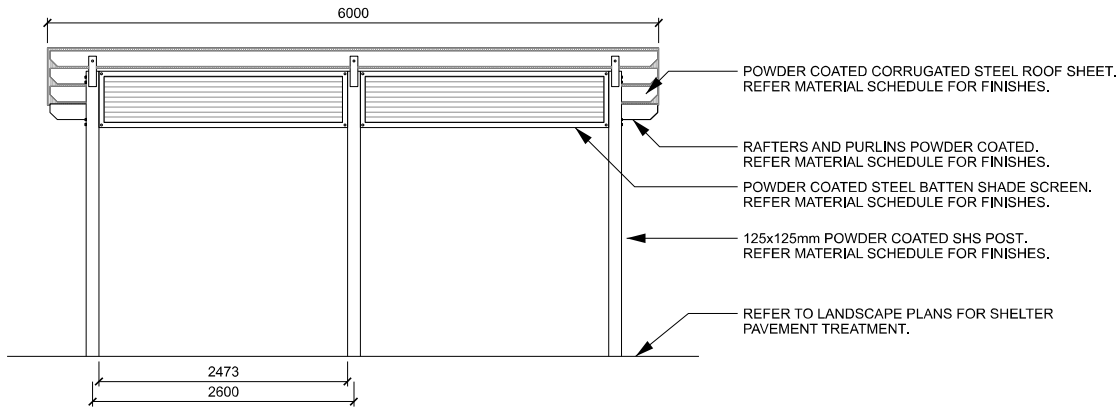


STANDARD DETAIL - LANDSCAPE

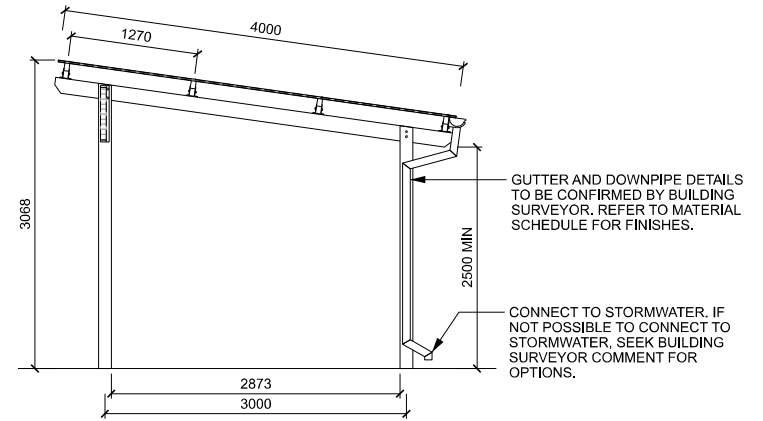
OPEN SPACE PARK STRUCTURES PUBLIC TOILET SHEET 3 OF 3

STATUS COUNCIL ISSUE NOT FOR CONSTRUCTION

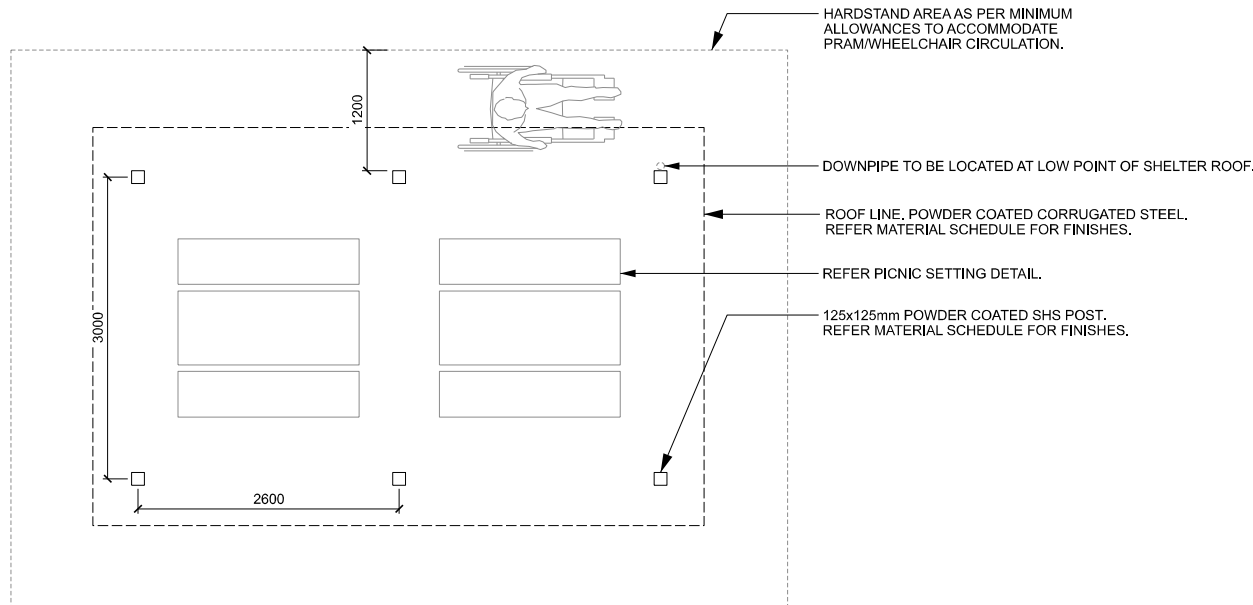
SCALE	DATE
AS SHOWN	14.07.2023
DWG No.	REV
OS 101C	5



1 PARK SHELTER
TYPICAL FRONT ELEVATION 1:50



2 PARK SHELTER
TYPICAL SIDE ELEVATION 1:50



3 PARK SHELTER
TYPICAL SETOUT PLAN 1:50

SUPPLIER: TERRAIN GROUP.
OR APPROVED SIMILAR.

NOTE:
- TWO PICNIC SETTINGS TO BE PROVIDED IN LOCAL PARK SHELTERS.
- MAXIMUM 1:40 CROSSFALL TO SHELTER CONCRETE PAD.
- SHELTER LEGS TO BE EXTENDED IF AND AS REQUIRED TO ENSURE FIXINGS ARE FLUSH WITH GROUND SURFACE.
- EXTENDED LEG FOOTING PREFERRED.
BOLT DOWN LEGS MAY BE ACCEPTED ON CASE BY CASE BASIS.

REV.	DESCRIPTION	DATE	DRN	CHKD
1	PRELIMINARY	01.09.23	M.M.	R.D.
2	PRELIMINARY	01.11.23	S.W.	R.D.
3	PRELIMINARY	14.12.23	M.M.	R.D.
4	COUNCIL ISSUE	12.07.24	M.M.	R.D.

NOTES

- ALL MEASUREMENTS ARE IN MILLIMETRES UNLESS OTHERWISE STATED.
- REFER WYNDHAM CITY COUNCIL WEBSITE TO ENSURE DRAWINGS ARE THE LATEST REVISION.
- DRAWINGS ARE CONCEPT ONLY AND NOT SPECIFIC TO ANY SITE OR SITE CONDITIONS.
- DRAWINGS CONTAIN TYPICAL ENGINEERING DETAIL FOR INFORMATION ONLY AND WILL REQUIRE PROJECT AND SITE SPECIFIC STRUCTURAL ENGINEERING AND OR SHOP DRAWINGS.
- DRAWINGS WILL BE SUBJECT TO CHANGE THROUGHOUT DESIGN AND CONSTRUCTION PROCESS.
- OVERALL LAYOUT, SIZE AND THEME WILL NOT CHANGE.
- THE DESIGN ASSUMES THAT THE DESIGN WILL BE DEVELOPED AND CONSTRUCTED BY A SUITABLY QUALIFIED CONTRACTOR WITH MINIMUM 10 YEARS RELEVANT INDUSTRY EXPERIENCE.



STANDARD DETAIL - LANDSCAPE

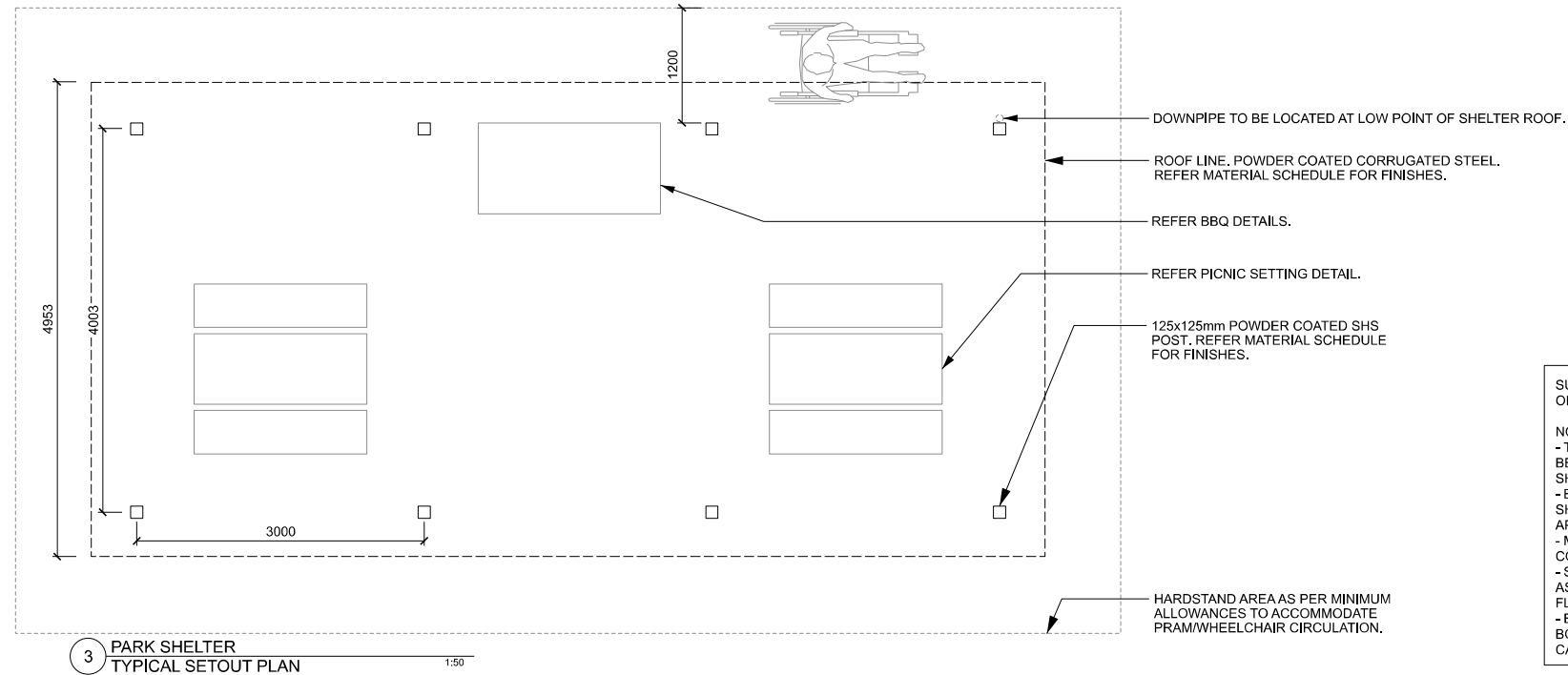
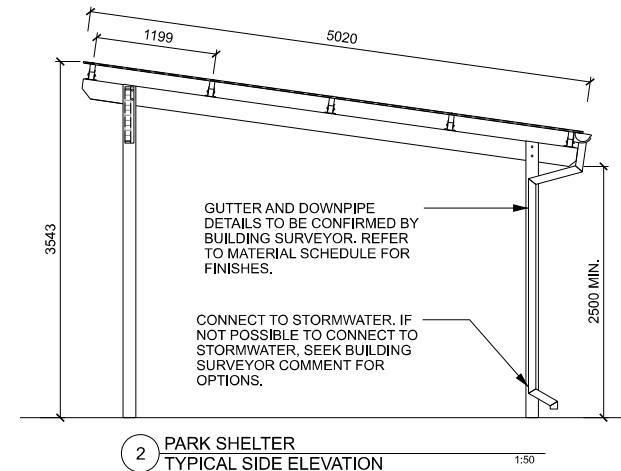
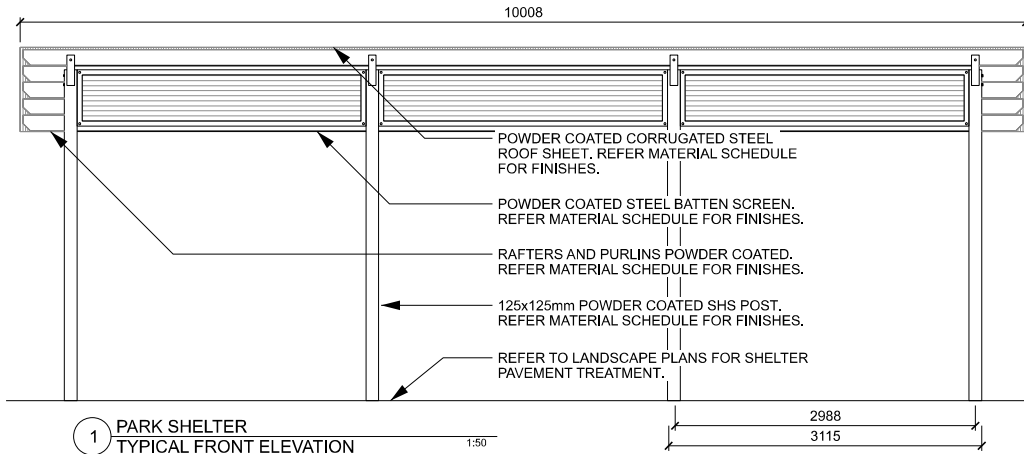
OPEN SPACE PARK STRUCTURES

LOCAL PARK SHELTER

SHEET 1 OF 3

SCALE	DATE
AS SHOWN	01.09.2023
DWG No.	REV
OS 102A	4

A3



SUPPLIER: TERRAIN GROUP.
OR APPROVED SIMILAR.

NOTE:
- TWO PICNIC SETTINGS AND A BBQ TO BE PROVIDED IN DISTRICT PARK SHELTERS.
- BBQ CAN BE RELOCATED OUTSIDE OF SHELTER WHEN REQUIRED AND APPROVED BY COUNCIL.
- MAXIMUM 1:40 CROSSFALL TO SHELTER CONCRETE PAD.
- SHELTER LEGS TO BE EXTENDED IF AND AS REQUIRED TO ENSURE FIXINGS ARE FLUSH WITH GROUND SURFACE.
- EXTENDED LEG FOOTING PREFERRED.
- BOLT DOWN LEGS MAY BE ACCEPTED ON CASE BY CASE BASIS.

REV.	DESCRIPTION	DATE	DRN	CHKD
1	PRELIMINARY	01.09.23	M.M.	R.D.
2	PRELIMINARY	01.11.23	S.W.	R.D.
3	PRELIMINARY	14.12.23	M.M.	R.D.
4	COUNCIL ISSUE	12.07.24	M.M.	R.D.

NOTES

- ALL MEASUREMENTS ARE IN MILLIMETRES UNLESS OTHERWISE STATED.
- REFER WYNDHAM CITY COUNCIL WEBSITE TO ENSURE DRAWINGS ARE THE LATEST REVISION.
- DRAWINGS ARE CONCEPT ONLY AND NOT SPECIFIC TO ANY SITE OR SITE CONDITIONS.
- DRAWINGS CONTAIN TYPICAL ENGINEERING DETAIL FOR INFORMATION ONLY AND WILL REQUIRE PROJECT AND SITE SPECIFIC STRUCTURAL ENGINEERING AND OR SHOP DRAWINGS.
- DRAWINGS WILL BE SUBJECT TO CHANGE THROUGHOUT DESIGN AND CONSTRUCTION PROCESS.
- OVERALL LAYOUT, SIZE AND THEME WILL NOT CHANGE.
- THE DESIGN ASSUMES THAT THE DESIGN WILL BE DEVELOPED AND CONSTRUCTED BY A SUITABLY QUALIFIED CONTRACTOR WITH MINIMUM 10 YEARS RELEVANT INDUSTRY EXPERIENCE.



STANDARD DETAIL - LANDSCAPE

OPEN SPACE PARK STRUCTURES

DISTRICT PARK SHELTER

SHEET 2 OF 3

SCALE	DATE
AS SHOWN	01.09.2023
DWG No.	REV
OS 102B	4



NOTE:
- REFERENCE IMAGE ONLY.

1 SHELTER BENCHMARKING IMAGE

1:50

Item	Material	Finish	Alternative Finish
Rafters and Purlins	Powder coated steel	Preferred Finish: Woodland Grey, Basalt, Dune or Monument.	Alternative Finish: 304 Stainless Steel or alternative powdercoat colour. All alternative finishes and materials are subject to council review and approval.
Posts	Powder coated steel	Preferred Finish: SHS powdercoated posts with insitu footings. Colour Options: Woodland Grey, Basalt, Dune or Monument.	Alternative Finish: Hardwood timber posts with galvanised steel bolt down post anchors. All internal posts to be powder coated SHS. All alternative finishes and materials are subject to Council review and approval.
Roof	Powder coated corrugated steel	Preferred Finish: Woodland Grey, Basalt, Dune or Monument.	Alternative Finish: 304 Stainless Steel or alternative powdercoat colour. All alternative finishes and materials are subject to council review and approval.
Shade Screen	Powder coated steel battens	Preferred Finish: Woodland Grey, Basalt, Dune or Monument.	Alternative Finish: Hardwood timber battens or powder coated perforated panels. All alternative finishes and materials are subject to council review and approval.
Fixings	Stainless Steel	All fixings to be stainless steel, gavanised or powder coated anti-vandal fixings. All exposed fixings to be capped. All fixtures and fittings to be painted to match the colour of the general structure.	N/A
Drainage	Powder coated steel half round gutter, fascia & downpipe	Colour to match balance of shelter and connected to storm water system or approved passive irrigation design.	N/A

NOTE: ALL CHANGES TO COUNCIL'S PREFERRED FINISHES TO BE SHOWN IN RED FOR COUNCIL APPROVAL.

REV.	DESCRIPTION	DATE	DRN	CHKD
1	PRELIMINARY	01.09.23	M.M.	R.D.
2	PRELIMINARY	01.11.23	S.M.	R.D.
3	PRELIMINARY	14.12.23	M.M.	R.D.
4	COUNCIL ISSUE	12.07.24	M.M.	R.D.

NOTES

- ALL MEASUREMENTS ARE IN MILLIMETRES UNLESS OTHERWISE STATED.
- REFER WYNDHAM CITY COUNCIL WEBSITE TO ENSURE DRAWINGS ARE THE LATEST REVISION.
- DRAWINGS ARE CONCEPT ONLY AND NOT SPECIFIC TO ANY SITE OR SITE CONDITIONS.
- DRAWINGS CONTAIN TYPICAL ENGINEERING DETAIL FOR INFORMATION ONLY AND WILL REQUIRE PROJECT AND SITE SPECIFIC STRUCTURAL ENGINEERING AND OR SHOP DRAWINGS.
- DRAWINGS WILL BE SUBJECT TO CHANGE THROUGHOUT DESIGN AND CONSTRUCTION PROCESS.
- OVERALL LAYOUT, SIZE AND THEME WILL NOT CHANGE.
- THE DESIGN ASSUMES THAT THE DESIGN WILL BE DEVELOPED AND CONSTRUCTED BY A SUITABLY QUALIFIED CONTRACTOR WITH MINIMUM 10 YEARS RELEVANT INDUSTRY EXPERIENCE.



STANDARD DETAIL - LANDSCAPE

OPEN SPACE PARK STRUCTURES

SHELTER MATERIAL SCHEDULE

SHEET 3 OF 3

STATUS	COUNCIL ISSUE	NOT FOR CONSTRUCTION
SCALE		DATE
AS SHOWN		01.09.2023
DWG No.		REV
OS 102C		4