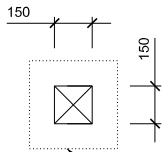
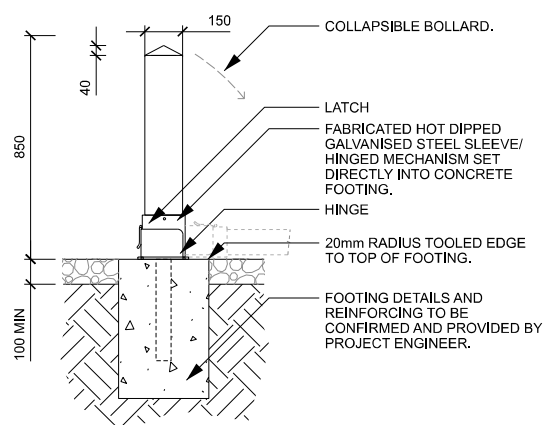


NOTE:
 - REMOVABLE BOLLARD WITH FOOTING ONLY TO BE USED IN INSTANCES WHERE INSTALLED IN GRAVEL. UNLESS OTHERWISE APPROVED BY COUNCIL.
 - BOLLARDS ARE TO BE INSTALLED WITH HOLES FACING PERPENDICULAR TO THE ROAD.
 - CYPRESS PINE TIMBER PREFERRED.
 HARDWOOD, RECYCLED PLASTIC OR YELLOW STEEL MAY BE ACCEPTED ON CASE BY CASE BASIS

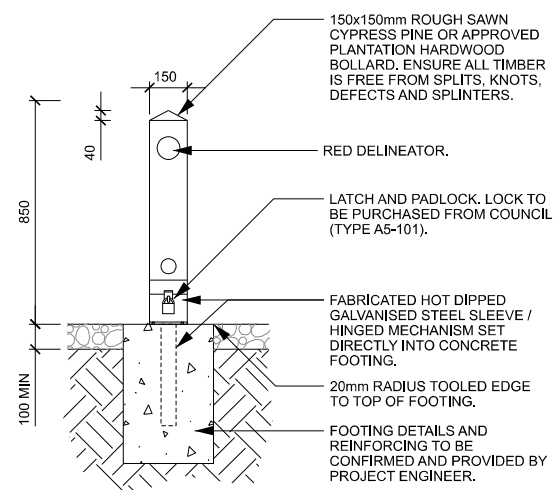


FOOTING DETAILS AND REINFORCING TO BE CONFIRMED AND PROVIDED BY PROJECT ENGINEER.

1 REMOVABLE BOLLARD (FOOTING) TYPICAL PLAN 1:20



2 REMOVABLE BOLLARD (FOOTING) TYPICAL SIDE ELEVATION 1:20



3 REMOVABLE BOLLARD (FOOTING) TYPICAL FRONT ELEVATION 1:20

REV.	DESCRIPTION	DATE	DRN	CHKD
1	PRELIMINARY	01.11.23	E.B.	R.D.
2	PRELIMINARY	14.12.23	M.M.	R.D.
3	COUNCIL ISSUE	12.07.24	M.M.	R.D.

NOTES
 - ALL MEASUREMENTS ARE IN MILLIMETRES UNLESS OTHERWISE STATED.
 - REFER WYNDHAM CITY COUNCIL WEBSITE TO ENSURE DRAWINGS ARE THE LATEST REVISION.
 - DRAWINGS ARE CONCEPT ONLY AND NOT SPECIFIC TO ANY SITE OR SITE CONDITIONS.
 - DRAWINGS CONTAIN TYPICAL ENGINEERING DETAIL FOR INFORMATION ONLY AND WILL REQUIRE PROJECT AND SITE SPECIFIC STRUCTURAL ENGINEERING AND OR SHOP DRAWINGS.
 - DRAWINGS WILL BE SUBJECT TO CHANGE THROUGHOUT DESIGN AND CONSTRUCTION PROCESS.
 - OVERALL LAYOUT, SIZE AND THEME WILL NOT CHANGE.
 - THE DESIGN ASSUMES THAT THE DESIGN WILL BE DEVELOPED AND CONSTRUCTED BY A SUITABLY QUALIFIED CONTRACTOR WITH MINIMUM 10 YEARS RELEVANT INDUSTRY EXPERIENCE.

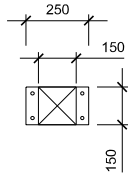


STANDARD DETAIL - LANDSCAPE
BOLLARDS/ FENCING
REMOVABLE BOLLARD IN GRAVEL
 SHEET 1 OF 2

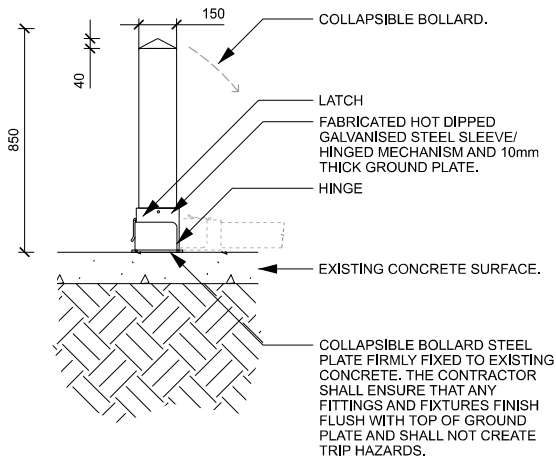
SCALE	DATE
AS SHOWN	12.09.2023
DWG No.	REV
OS 301A	3

A3

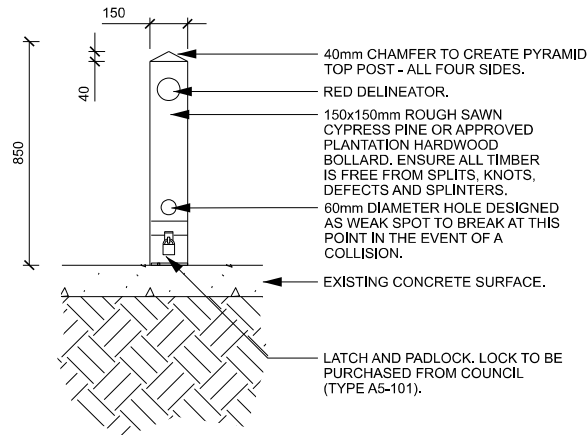
NOTE:
 - BOLLARDS ARE TO BE INSTALLED WITH HOLES FACING PERPENDICULAR TO THE ROAD.
 - CYPRESS PINE TIMBER PREFERRED.
 HARDWOOD, RECYCLED PLASTIC OR YELLOW STEEL MAY BE ACCEPTED ON CASE BY CASE BASIS



1 REMOVABLE BOLLARD (FIXED)
 TYPICAL PLAN 1:20



2 REMOVABLE BOLLARD (FIXED)
 TYPICAL SIDE ELEVATION 1:20



3 REMOVABLE BOLLARD (FIXED)
 TYPICAL FRONT ELEVATION 1:20

REV.	DESCRIPTION	DATE	DRN	CHKD
1	PRELIMINARY	01.11.23	E.B.	R.D.
2	PRELIMINARY	14.12.23	M.M.	R.D.
3	COUNCIL ISSUE	12.07.24	M.M.	R.D.

NOTES

- ALL MEASUREMENTS ARE IN MILLIMETRES UNLESS OTHERWISE STATED.
- REFER WYNDHAM CITY COUNCIL WEBSITE TO ENSURE DRAWINGS ARE THE LATEST REVISION.
- DRAWINGS ARE CONCEPT ONLY AND NOT SPECIFIC TO ANY SITE OR SITE CONDITIONS.
- DRAWINGS CONTAIN TYPICAL ENGINEERING DETAIL FOR INFORMATION ONLY AND WILL REQUIRE PROJECT AND SITE SPECIFIC STRUCTURAL ENGINEERING AND OR SHOP DRAWINGS.
- DRAWINGS WILL BE SUBJECT TO CHANGE THROUGHOUT DESIGN AND CONSTRUCTION PROCESS.
- OVERALL LAYOUT, SIZE AND THEME WILL NOT CHANGE.
- THE DESIGN ASSUMES THAT THE DESIGN WILL BE DEVELOPED AND CONSTRUCTED BY A SUITABLY QUALIFIED CONTRACTOR WITH MINIMUM 10 YEARS RELEVANT INDUSTRY EXPERIENCE.



STANDARD DETAIL - LANDSCAPE

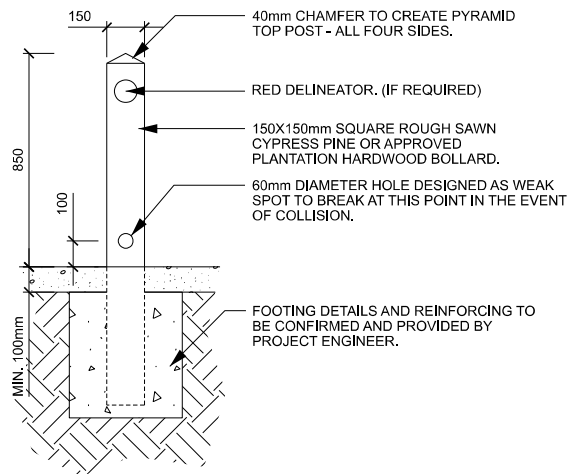
BOLLARDS/ FENCING
REMOVABLE BOLLARD TYPICAL
SHEET 2 OF 2

STATUS COUNCIL ISSUE NOT FOR CONSTRUCTION

SCALE	DATE
AS SHOWN	12.09.2023
DWG No.	REV
OS 301B	3

NOTE:

- BOLLARDS ARE TO BE INSTALLED WITH HOLES FACING PERPENDICULAR TO THE ROAD.
- BOLLARD HEIGHTS ARE AS FOLLOWS:
 - 850mm HIGH FOR INDIVIDUAL BOLLARDS
 - 550mm HIGH FOR POST AND RAIL.
- COUNCIL TO CONFIRM PREFERENCE ON CASE BY CASE BASIS.
- CYPRESS PINE TIMBER PREFERRED.
- HARDWOOD OR RECYCLED PLASTIC MAY BE ACCEPTED ON CASE BY CASE BASIS.
- BOLLARDS TO SIT WITHIN A GRAVEL MOW STRIP WHEN BOLLARDS ARE NOT IN GARDEN BEDS.



1 STANDARD BOLLARD
TYPICAL DETAIL SECTION 1:20

REV.	DESCRIPTION	DATE	DRN	CHKD
1	PRELIMINARY	01.11.23	E.B.	R.D.
2	PRELIMINARY	14.12.23	M.M.	R.D.
3	PRELIMINARY	18.12.23	M.M.	R.D.
4	COUNCIL ISSUE	12.07.24	M.M.	R.D.

NOTES

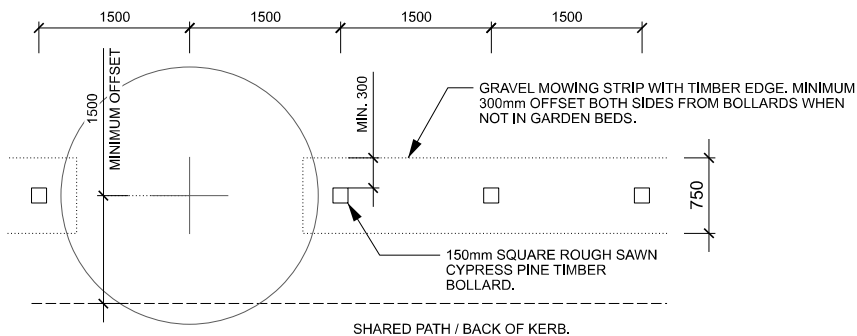
- ALL MEASUREMENTS ARE IN MILLIMETRES UNLESS OTHERWISE STATED.
- REFER WYNDHAM CITY COUNCIL WEBSITE TO ENSURE DRAWINGS ARE THE LATEST REVISION.
- DRAWINGS ARE CONCEPT ONLY AND NOT SPECIFIC TO ANY SITE OR SITE CONDITIONS.
- DRAWINGS CONTAIN TYPICAL ENGINEERING DETAIL FOR INFORMATION ONLY AND WILL REQUIRE PROJECT AND SITE SPECIFIC STRUCTURAL ENGINEERING AND OR SHOP DRAWINGS.
- DRAWINGS WILL BE SUBJECT TO CHANGE THROUGHOUT DESIGN AND CONSTRUCTION PROCESS.
- OVERALL LAYOUT, SIZE AND THEME WILL NOT CHANGE.
- THE DESIGN ASSUMES THAT THE DESIGN WILL BE DEVELOPED AND CONSTRUCTED BY A SUITABLY QUALIFIED CONTRACTOR WITH MINIMUM 10 YEARS RELEVANT INDUSTRY EXPERIENCE.



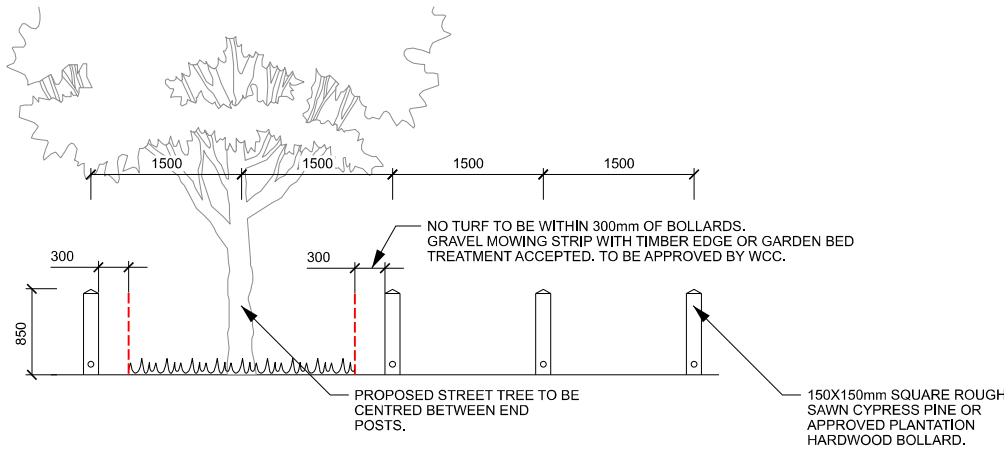
STANDARD DETAIL - LANDSCAPE
BOLLARDS/ FENCING
STANDARD BOLLARD
SHEET 1 OF 1

STATUS	COUNCIL ISSUE	NOT FOR CONSTRUCTION
SCALE		DATE
AS SHOWN		01.09.2023
DWG No.		REV
OS 302		4

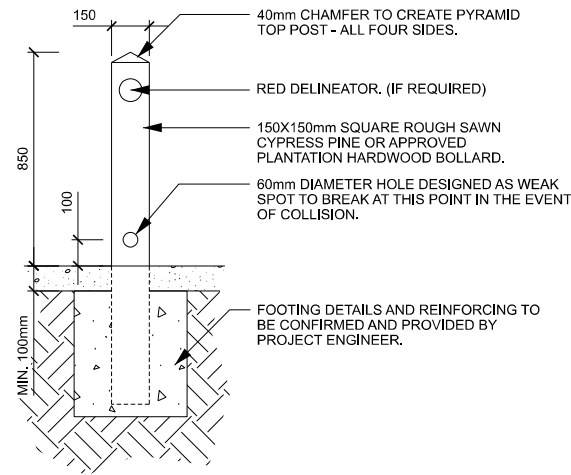
NOTE:
 - BOLLARDS ARE TO BE INSTALLED WITH HOLES FACING PERPENDICULAR TO THE ROAD.
 - BOLLARD HEIGHTS ARE AS FOLLOWS:
 • 850mm HIGH FOR INDIVIDUAL BOLLARDS
 • 550mm HIGH FOR POST AND RAIL.
 COUNCIL TO CONFIRM PREFERENCE ON CASE BY CASE BASIS.
 - CYPRESS PINE TIMBER PREFERRED. HARDWOOD OR RECYCLED PLASTIC MAY BE ACCEPTED ON CASE BY CASE BASIS.
 - BOLLARDS TO SIT WITHIN A GRAVEL MOW STRIP WHEN BOLLARDS ARE NOT IN GARDEN BEDS.



1 STANDARD BOLLARD WITH TREE
 TYPICAL DETAIL PLAN 1:50



2 STANDARD BOLLARD WITH TREE
 TYPICAL DETAIL ELEVATION 1:50



3 STANDARD BOLLARD
 TYPICAL DETAIL SECTION 1:20

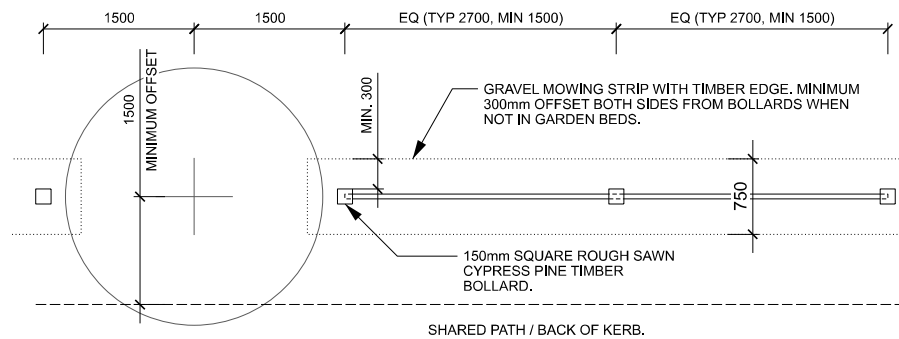
REV.	DESCRIPTION	DATE	DRN	CHKD
1	PRELIMINARY	01.11.23	E.B.	R.D.
2	PRELIMINARY	14.12.23	M.M.	R.D.
3	PRELIMINARY	18.12.23	M.M.	R.D.
4	COUNCIL ISSUE	12.07.24	M.M.	R.D.

NOTES
 - ALL MEASUREMENTS ARE IN MILLIMETRES UNLESS OTHERWISE STATED.
 - REFER WYNDHAM CITY COUNCIL WEBSITE TO ENSURE DRAWINGS ARE THE LATEST REVISION.
 - DRAWINGS ARE CONCEPT ONLY AND NOT SPECIFIC TO ANY SITE OR SITE CONDITIONS.
 - DRAWINGS CONTAIN TYPICAL ENGINEERING DETAIL FOR INFORMATION ONLY AND WILL REQUIRE PROJECT AND SITE SPECIFIC STRUCTURAL ENGINEERING AND OR SHOP DRAWINGS.
 - DRAWINGS WILL BE SUBJECT TO CHANGE THROUGHOUT DESIGN AND CONSTRUCTION PROCESS.
 - OVERALL LAYOUT, SIZE AND THEME WILL NOT CHANGE.
 - THE DESIGN ASSUMES THAT THE DESIGN WILL BE DEVELOPED AND CONSTRUCTED BY A SUITABLY QUALIFIED CONTRACTOR WITH MINIMUM 10 YEARS RELEVANT INDUSTRY EXPERIENCE.



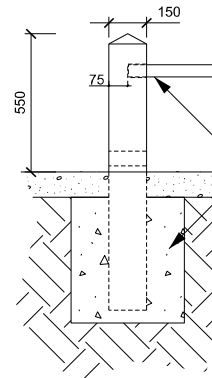
STANDARD DETAIL - LANDSCAPE
BOLLARDS/ FENCING
STANDARD BOLLARD WITH TREE
 SHEET 1 OF 1

STATUS	COUNCIL ISSUE	NOT FOR CONSTRUCTION
SCALE		DATE
AS SHOWN		01.09.2023
DWG No.		REV
OS 303		4



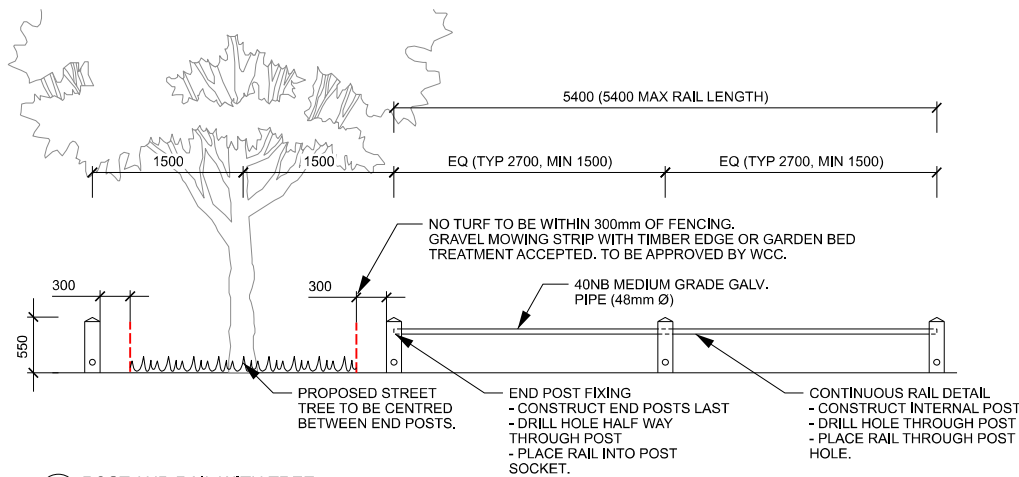
1 POST AND RAIL WITH TREE
TYPICAL DETAIL PLAN

1:50



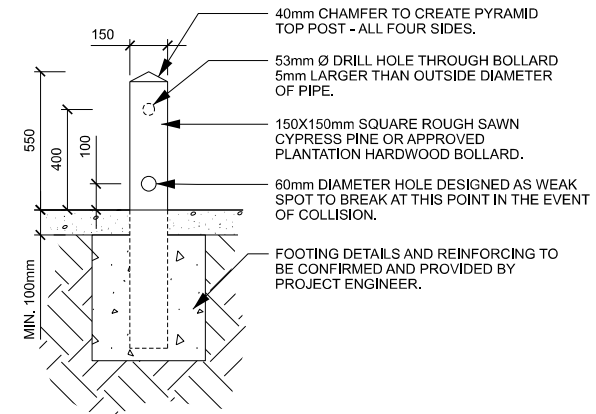
3 POST AND RAIL (FRONT)
TYPICAL DETAIL SECTION

NOTE:
- BOLLARDS ARE TO BE INSTALLED WITH HOLES FACING PERPENDICULAR TO THE ROAD.
- BOLLARD HEIGHTS ARE AS FOLLOWS:
 • 850mm HIGH FOR INDIVIDUAL BOLLARDS
 • 550mm HIGH FOR POST AND RAIL.
COUNCIL TO CONFIRM PREFERENCE ON CASE BY CASE BASIS.
- CYPRESS PINE TIMBER PREFERRED.
HARDWOOD OR RECYCLED PLASTIC MAY BE ACCEPTED ON CASE BY CASE BASIS.
- BOLLARDS TO SIT WITHIN A GRAVEL MOW STRIP WHEN BOLLARDS ARE NOT IN GARDEN BEDS.



2 POST AND RAIL WITH TREE
TYPICAL DETAIL ELEVATION

1:50



4 POST AND RAIL (SIDE)
TYPICAL DETAIL SECTION

1:20

REV.	DESCRIPTION	DATE	DRN	CHKD
1	PRELIMINARY	01.11.23	E.B.	R.D.
2	PRELIMINARY	14.12.23	M.M.	R.D.
3	PRELIMINARY	18.12.23	M.M.	R.D.
4	COUNCIL ISSUE	12.07.24	M.M.	R.D.

NOTES

- ALL MEASUREMENTS ARE IN MILLIMETRES UNLESS OTHERWISE STATED.
- REFER WYNDHAM CITY COUNCIL WEBSITE TO ENSURE DRAWINGS ARE THE LATEST REVISION.
- DRAWINGS ARE CONCEPT ONLY AND NOT SPECIFIC TO ANY SITE OR SITE CONDITIONS.
- DRAWINGS CONTAIN TYPICAL ENGINEERING DETAIL FOR INFORMATION ONLY AND WILL REQUIRE PROJECT AND SITE SPECIFIC STRUCTURAL ENGINEERING AND OR SHOP DRAWINGS.
- DRAWINGS WILL BE SUBJECT TO CHANGE THROUGHOUT DESIGN AND CONSTRUCTION PROCESS.
- OVERALL LAYOUT, SIZE AND THEME WILL NOT CHANGE.
- THE DESIGN ASSUMES THAT THE DESIGN WILL BE DEVELOPED AND CONSTRUCTED BY A SUITABLY QUALIFIED CONTRACTOR WITH MINIMUM 10 YEARS RELEVANT INDUSTRY EXPERIENCE.



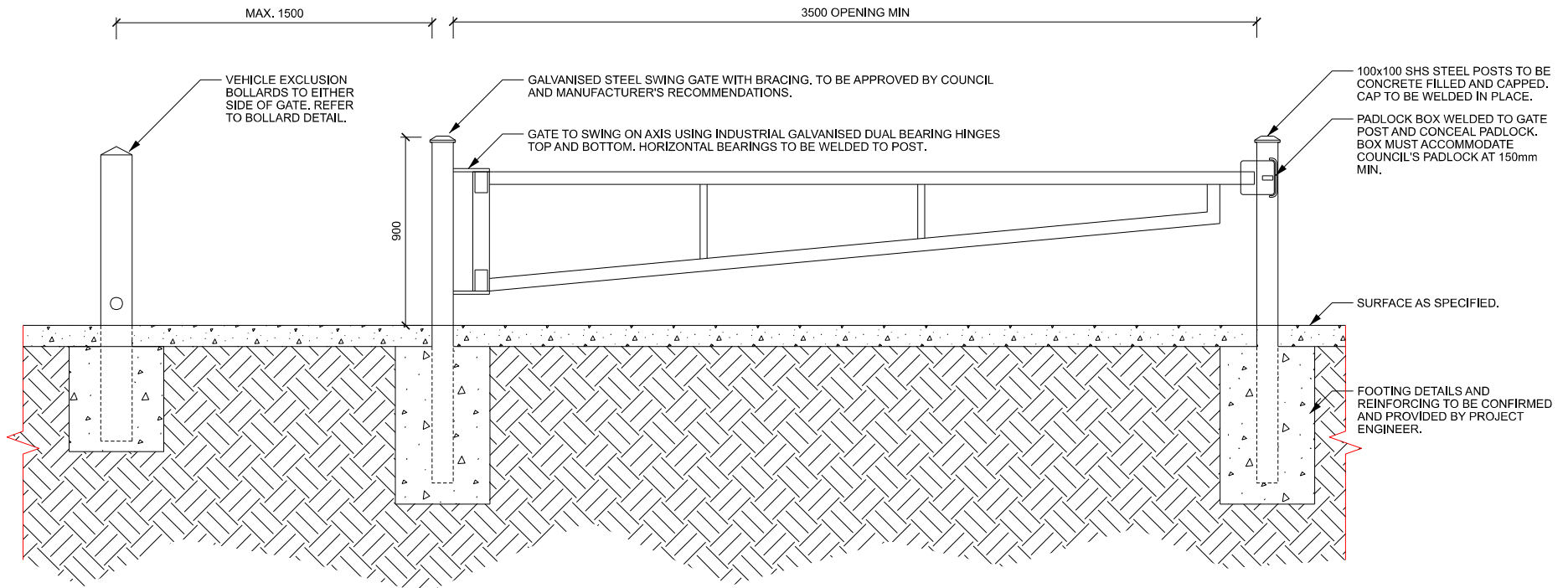
STANDARD DETAIL - LANDSCAPE
BOLLARDS/ FENCING
POST AND RAIL WITH TREE
SHEET 1 OF 1

STATUS	COUNCIL ISSUE	NOT FOR CONSTRUCTION
SCALE		DATE
AS SHOWN		01.09.2023
DWG No.		REV
OS 304		4

NOTE:
 - AN ADDITIONAL POST IS REQUIRED TO PREVENT GATE FROM SWINGING TOO FAR BACKWARDS.
 - GATE IS TO SWING AWAY FROM FOOTPATH AND/OR ROAD.
 - MAINTENANCE GATE POSTS & BOLLARDS ARE TO SIT WITHIN A MIN. 300MM GRAVEL OR CONCRETE MOW STRIP OFFSET FROM BOTH SIDES OF FENCING, WHEN NOT IN GARDEN BED. TREATMENT TO BE APPROVED BY WCC.
 - ENSURE LOCK PLATE IS ORIENTED SO GATE CAN NOT SWING INTO CONFLICT WITH PEDESTRIANS OR VEHICLES

Finishes Schedule			
Item	Material	Finish	Alternative Finish
Posts	Steel	Galvanised Steel	N/A
Gate	Steel	Galvanised Steel	N/A
Fixtures & Fittings	Stainless Steel	All fixings to be stainless steel or galvanised. All exposed fixings to be capped. All fixture & fittings to be painted to match the colour of the general structure.	N/A

NOTE: ALL CHANGES TO COUNCIL'S PREFERRED FINISHES TO BE SHOWN IN RED FOR COUNCIL APPROVAL.



1 MAINTENANCE GATE TYPICAL DETAIL

1:20

REV.	DESCRIPTION	DATE	DRN	CHKD
1	PRELIMINARY	01.11.23	E.B.	R.D.
2	PRELIMINARY	14.12.23	M.M.	R.D.
3	COUNCIL ISSUE	12.07.24	M.M.	R.D.

NOTES

- ALL MEASUREMENTS ARE IN MILLIMETRES UNLESS OTHERWISE STATED.
- REFER WYNDHAM CITY COUNCIL WEBSITE TO ENSURE DRAWINGS ARE THE LATEST REVISION.
- DRAWINGS ARE CONCEPT ONLY AND NOT SPECIFIC TO ANY SITE OR SITE CONDITIONS.
- DRAWINGS CONTAIN TYPICAL ENGINEERING DETAIL FOR INFORMATION ONLY AND WILL REQUIRE PROJECT AND SITE SPECIFIC STRUCTURAL ENGINEERING AND OR SHOP DRAWINGS.
- DRAWINGS WILL BE SUBJECT TO CHANGE THROUGHOUT DESIGN AND CONSTRUCTION PROCESS.
- OVERALL LAYOUT, SIZE AND THEME WILL NOT CHANGE.
- THE DESIGN ASSUMES THAT THE DESIGN WILL BE DEVELOPED AND CONSTRUCTED BY A SUITABLY QUALIFIED CONTRACTOR WITH MINIMUM 10 YEARS RELEVANT INDUSTRY EXPERIENCE.



STANDARD DETAIL - LANDSCAPE

BOLLARDS/ FENCING
 MAINTENANCE GATE
 SHEET 1 OF 1

STATUS COUNCIL ISSUE NOT FOR CONSTRUCTION

SCALE DATE

AS SHOWN 12.09.2023

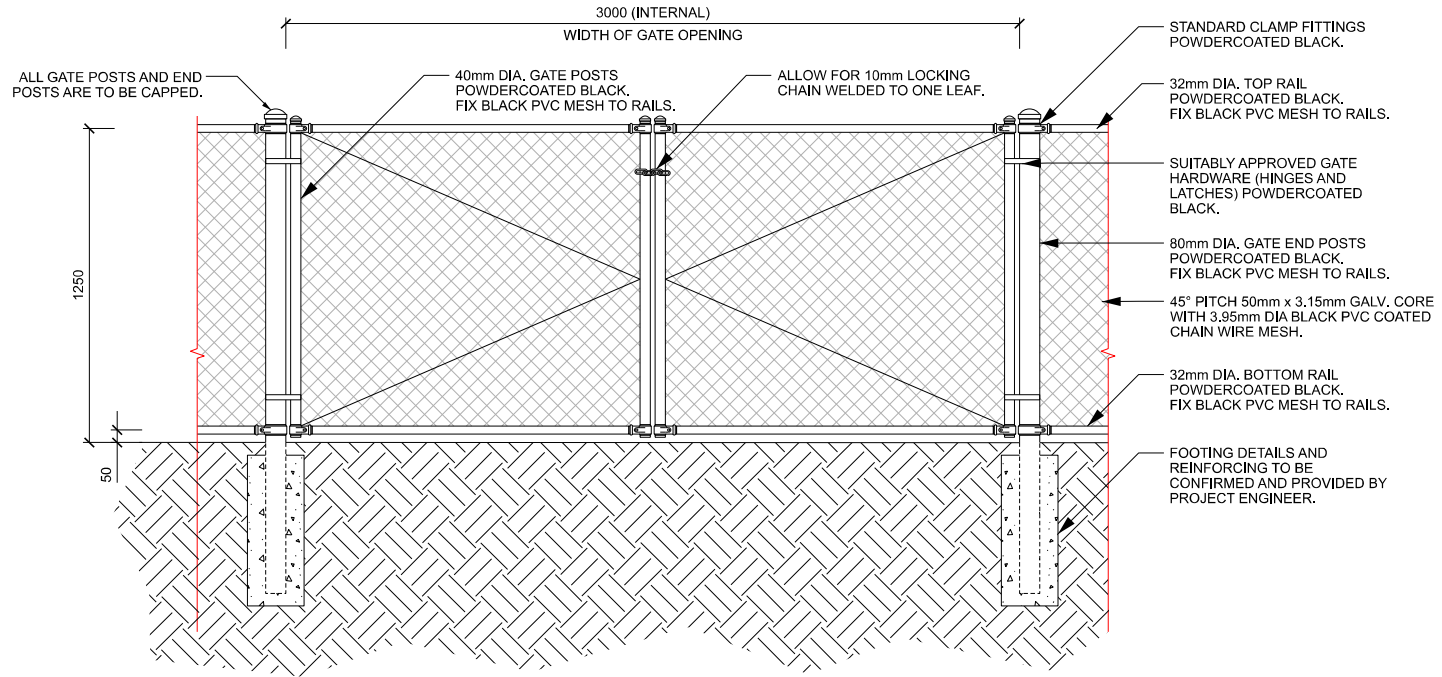
DWG No. REV

OS 305 3 A3

NOTE:
 - FENCING & GATES ARE TO SIT WITHIN A MIN. 300MM GRAVEL OR CONCRETE MOW STRIP OFFSET FROM BOTH SIDES OF FENCING. WHEN NOT IN GARDEN BED. TREATMENT TO BE APPROVED BY WCC.

Finishes Schedule			
Item	Material	Finish	Alternative Finish
Posts & Rails	Mild Steel	Preferred Finish: Monument (black) Powder coated finish.	Alternative Finish: Galvanised Steel or alternative powdercoat colour. All alternative finishes and materials are subject to Council review and approval.
Mesh	Galvanised Steel	Preferred Finish: Black PVC coated.	Alternative Finish: Galvanised Steel or alternative PVC colour. All alternative finishes and materials are subject to Council review and approval.
Fixtures & Fittings	Stainless Steel	All fixtures to be stainless steel, gavanised or powder coated anti-vandal fixings. All exposed fixings to be capped. All fixtures & fittings to be painted to match the colour of the general structure.	N/A

NOTE: ALL CHANGES TO COUNCIL'S PREFERRED FINISHES TO BE SHOWN IN RED FOR COUNCIL APPROVAL.



1 MAINTENANCE ACCESS GATE CHAIN MESH
 TYPICAL DETAIL 1:20

REV.	DESCRIPTION	DATE	DRN	CHKD
1	PRELIMINARY	01.09.23	E.B.	R.D.
2	PRELIMINARY	14.12.23	M.M.	R.D.
3	COUNCIL ISSUE	12.07.24	M.M.	R.D.

NOTES
 - ALL MEASUREMENTS ARE IN MILLIMETRES UNLESS OTHERWISE STATED.
 - REFER WYNDHAM CITY COUNCIL WEBSITE TO ENSURE DRAWINGS ARE THE LATEST REVISION.
 - DRAWINGS ARE CONCEPT ONLY AND NOT SPECIFIC TO ANY SITE OR SITE CONDITIONS.
 - DRAWINGS CONTAIN TYPICAL ENGINEERING DETAIL FOR INFORMATION ONLY AND WILL REQUIRE PROJECT AND SITE SPECIFIC STRUCTURAL ENGINEERING AND OR SHOP DRAWINGS.
 - DRAWINGS WILL BE SUBJECT TO CHANGE THROUGHOUT DESIGN AND CONSTRUCTION PROCESS.
 - OVERALL LAYOUT, SIZE AND THEME WILL NOT CHANGE.
 - THE DESIGN ASSUMES THAT THE DESIGN WILL BE DEVELOPED AND CONSTRUCTED BY A SUITABLY QUALIFIED CONTRACTOR WITH MINIMUM 10 YEARS RELEVANT INDUSTRY EXPERIENCE.



STANDARD DETAIL - LANDSCAPE

BOLLARDS/ FENCING
 MAINTENANCE ACCESS GATE
 SHEET 1 OF 1

STATUS COUNCIL ISSUE NOT FOR CONSTRUCTION

SCALE DATE

AS SHOWN 01.09.2023

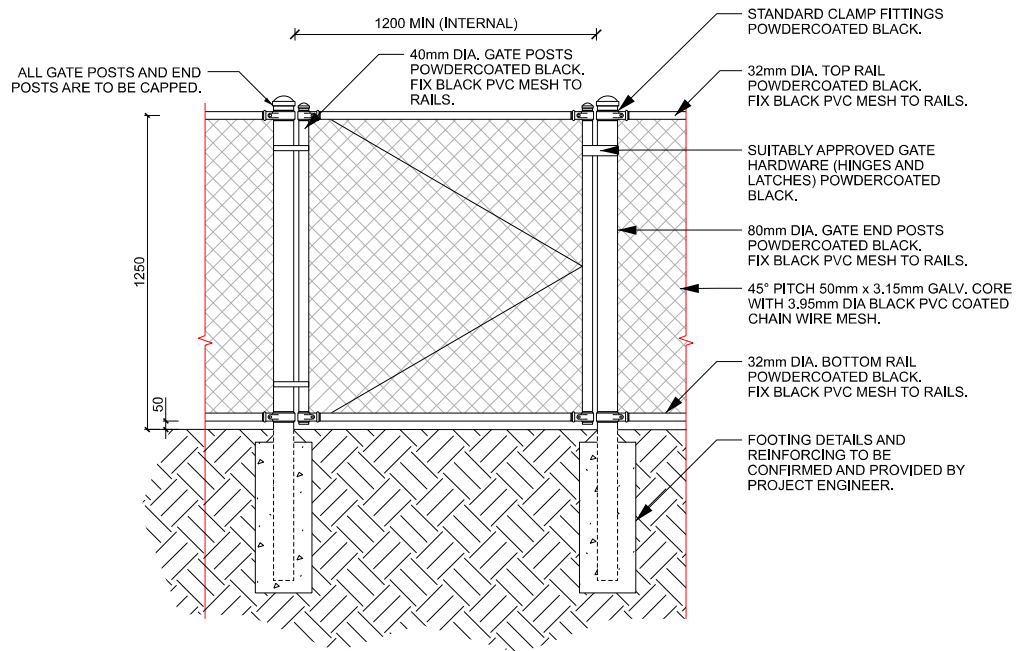
DWG No. REV

OS 306 3 A3

NOTE:
 - FENCING & GATES ARE TO SIT WITHIN A MIN. 300MM GRAVEL OR CONCRETE MOW STRIP OFFSET FROM BOTH SIDES OF FENCING. WHEN NOT IN GARDEN BED. TREATMENT TO BE APPROVED BY WCC.

Finishes Schedule			
Item	Material	Finish	Alternative Finish
Posts & Rails	Mild Steel	Preferred Finish: Monument (black) Powder coated finish.	Alternative Finish: Galvanised Steel or alternative powdercoat colour. All alternative finishes and materials are subject to Council review and approval.
Mesh	Galvanised Steel	Preferred Finish: Black PVC coated.	Alternative Finish: Galvanised Steel or alternative PVC colour. All alternative finishes and materials are subject to Council review and approval.
Fixtures & Fittings	Stainless Steel	All fixings to be stainless steel, gavanised or powder coated anti-vandal fixings. All exposed fixings to be capped. All fixtures & fittings to be painted to match the colour of the general structure.	N/A

NOTE: ALL CHANGES TO COUNCIL'S PREFERRED FINISHES TO BE SHOWN IN RED FOR COUNCIL APPROVAL.



1 PEDESTRIAN GATE
 TYPICAL DETAIL 1:20

REV.	DESCRIPTION	DATE	DRN	CHKD
1	PRELIMINARY	01.11.23	E.B.	R.D.
2	PRELIMINARY	14.12.23	M.M.	R.D.
3	COUNCIL ISSUE	12.07.24	M.M.	R.D.

NOTES

- ALL MEASUREMENTS ARE IN MILLIMETRES UNLESS OTHERWISE STATED.
- REFER WYNDHAM CITY COUNCIL WEBSITE TO ENSURE DRAWINGS ARE THE LATEST REVISION.
- DRAWINGS ARE CONCEPT ONLY AND NOT SPECIFIC TO ANY SITE OR SITE CONDITIONS.
- DRAWINGS CONTAIN TYPICAL ENGINEERING DETAIL FOR INFORMATION ONLY AND WILL REQUIRE PROJECT AND SITE SPECIFIC STRUCTURAL ENGINEERING AND OR SHOP DRAWINGS.
- DRAWINGS WILL BE SUBJECT TO CHANGE THROUGHOUT DESIGN AND CONSTRUCTION PROCESS.
- OVERALL LAYOUT, SIZE AND THEME WILL NOT CHANGE.
- THE DESIGN ASSUMES THAT THE DESIGN WILL BE DEVELOPED AND CONSTRUCTED BY A SUITABLY QUALIFIED CONTRACTOR WITH MINIMUM 10 YEARS RELEVANT INDUSTRY EXPERIENCE.



STANDARD DETAIL - LANDSCAPE

BOLLARDS/ FENCING
 PEDESTRIAN GATE
 SHEET 1 OF 1

STATUS COUNCIL ISSUE NOT FOR CONSTRUCTION

SCALE DATE

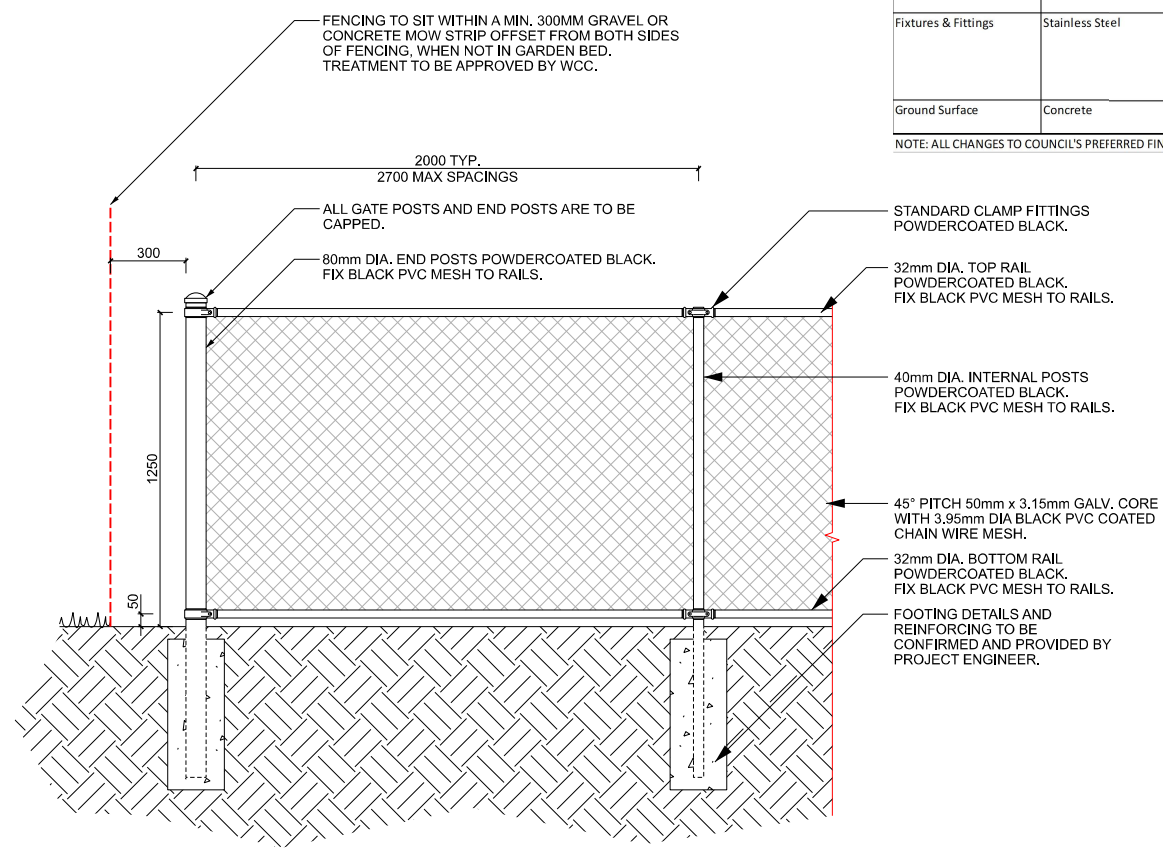
AS SHOWN 01.09.2023

DWG No. REV

OS 307 3 A3

Item	Material	Finish	Alternative Finish
Frame	Mild Steel	Preferred Finish: Monument (black) Powder coated finish.	Alternative Finish: Galvanised Steel or alternative powdercoat colour. All alternative finishes and materials are subject to Council review and approval.
Mesh Panel	Mild Steel	Preferred Finish: Monument (black) Powder coated finish.	Alternative Finish: Galvanised Steel or alternative powdercoat colour. All alternative finishes and materials are subject to Council review and approval.
Fixtures & Fittings	Stainless Steel	All fixings to be stainless steel, gavanised or powder coated anti-vandal fixings. All exposed fixings to be capped. All fixtures & fittings to be painted to match the colour of the general structure.	N/A
Ground Surface	Concrete	Minimum plain grey concrete with medium broom finish or to match other hardstand surfaces within scope of project works.	

NOTE: ALL CHANGES TO COUNCIL'S PREFERRED FINISHES TO BE SHOWN IN RED FOR COUNCIL APPROVAL.



1 STANDARD CHAIN MESH FENCE TYPICAL DETAIL 1:20

REV.	DESCRIPTION	DATE	DRN	CHKD
1	PRELIMINARY	01.09.23	E.B.	R.D.
2	PRELIMINARY	14.12.23	M.M.	R.D.
3	COUNCIL ISSUE	12.07.24	M.M.	R.D.

NOTES

- ALL MEASUREMENTS ARE IN MILLIMETRES UNLESS OTHERWISE STATED.
- REFER WYNDHAM CITY COUNCIL WEBSITE TO ENSURE DRAWINGS ARE THE LATEST REVISION.
- DRAWINGS ARE CONCEPT ONLY AND NOT SPECIFIC TO ANY SITE OR SITE CONDITIONS.
- DRAWINGS CONTAIN TYPICAL ENGINEERING DETAIL FOR INFORMATION ONLY AND WILL REQUIRE PROJECT AND SITE SPECIFIC STRUCTURAL ENGINEERING AND OR SHOP DRAWINGS.
- DRAWINGS WILL BE SUBJECT TO CHANGE THROUGHOUT DESIGN AND CONSTRUCTION PROCESS.
- OVERALL LAYOUT, SIZE AND THEME WILL NOT CHANGE.
- THE DESIGN ASSUMES THAT THE DESIGN WILL BE DEVELOPED AND CONSTRUCTED BY A SUITABLY QUALIFIED CONTRACTOR WITH MINIMUM 10 YEARS RELEVANT INDUSTRY EXPERIENCE.



STANDARD DETAIL - LANDSCAPE
BOLLARDS/ FENCING
STANDARD CHAIN MESH FENCE
SHEET 1 OF 1

SCALE	DATE
AS SHOWN	01.09.2023
DWG No.	REV
OS 308	3