

Social Story

LIT



Experiences Curated by Alistair Scott

LIT

27 MAR – 13 APR
THU – SUN, 7PM – 11PM

WYNDHAM PARK | FREE ENTRY
WYNDHAM.VIC.GOV.AU/LIT

Proudly presented by
wyndhamcity
city. coast. country

I am going to LIT.

It is held over 14 nights. Thursday through to Sunday, 27 March to 13 April 2025.

There are two Sensory Friendly Nights in the program: Wednesday 2 and 9 April.

From 7pm to 11pm each night.



LIT is a big event with lots of lights during the night.

It's at Wyndham Park in Werribee.

GETTING THERE

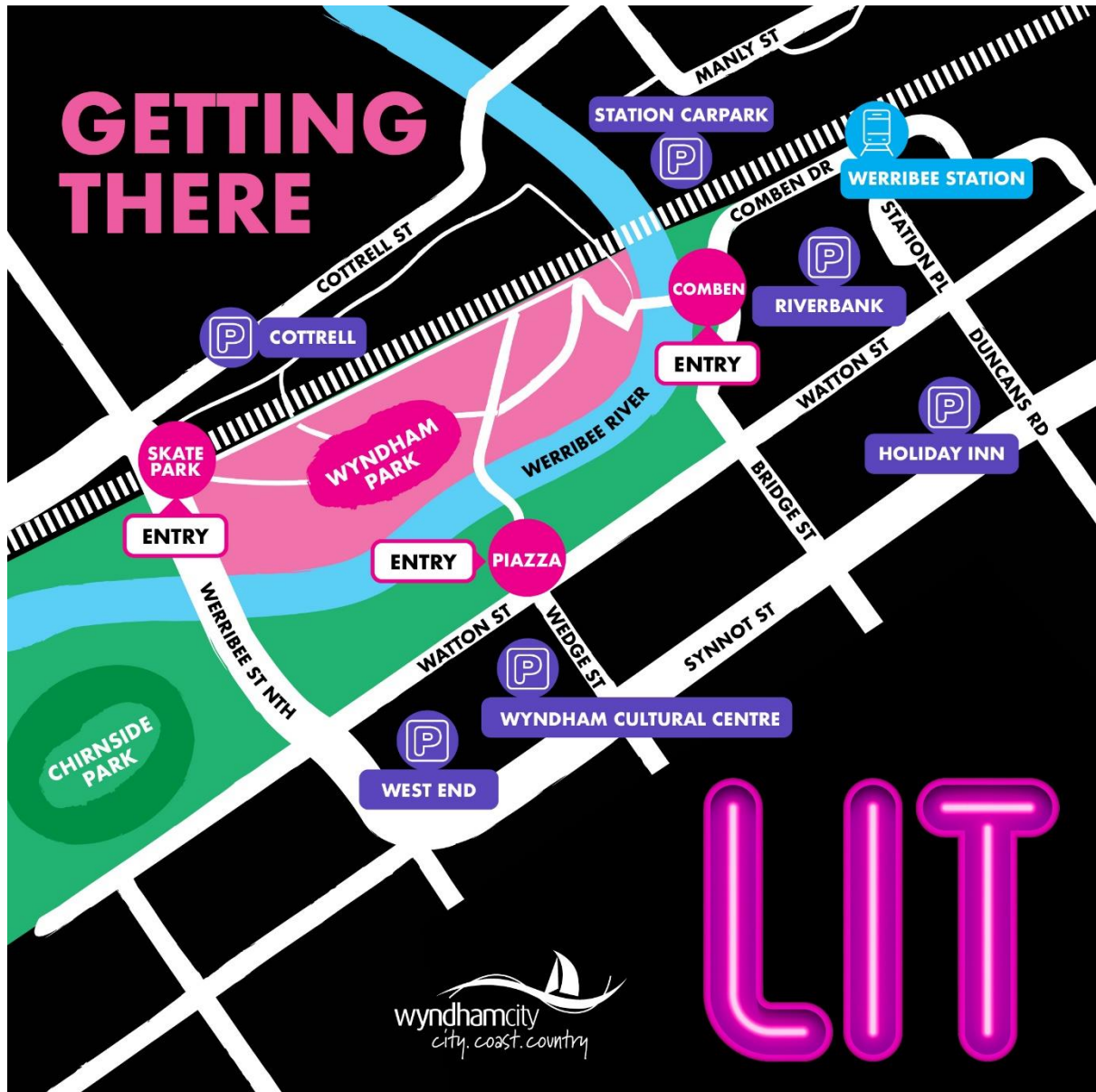
I can park in a range of public car parks near Wyndham Park in the Werribee City Centre. These include:

- West End Car Park
- Cultural Centre Car Park
- Riverbank Car Park
- Cottrell Street Car Park
- Werribee Train Station Car Park
- Holiday Inn Car Park
- Cherry Street Car Park

There is also street parking available along Watton Street and Synnot Street.

Wyndham Park is approximately a 500m walk from the Werribee Train Station and the Werribee Station/Manly Street bus terminal.

GETTING THERE MAP



ENTRANCE

There are three pedestrian access points I can enter LIT at Wyndham Park from.

- Wedge Street Piazza, Watton Street.
- Across Werribee Bicentennial Bridge from Comben Drive.
- Wyndham Park Skate Park, via Cottrell Street Car Park or Werribee Street North.

When I arrive, event staff will be at the entry to welcome me. Wristbands for children will be available at the entry points. Attendees can write their mobile number on the wristband in case they become separated during the event.



The artworks/ installations at LIT.

Ephemeral Collection

The Maze-like installation by Atelier Sisu features over 50 large inflatable bubbles. These bubbles light up with colour and produce sounds as you move through them.



The Guardians

A large inflatable installation by Matthew Aberline of The Beautiful and Useful Studio celebrates Australian wildflowers and the colours of the land. The artwork is accompanied by a soundscape that surrounds the installation.



Tarutharu - The Kurna Skink

A giant 27-meter Kurna Skink sculpture features an immersive soundscape and narration. The sculpture includes internal lighting and a mechanical head that continuously moves.

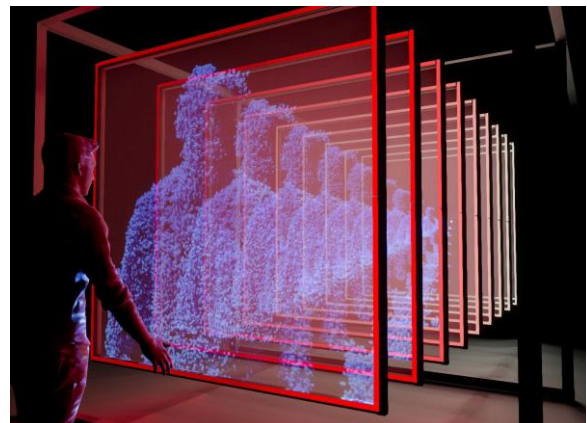
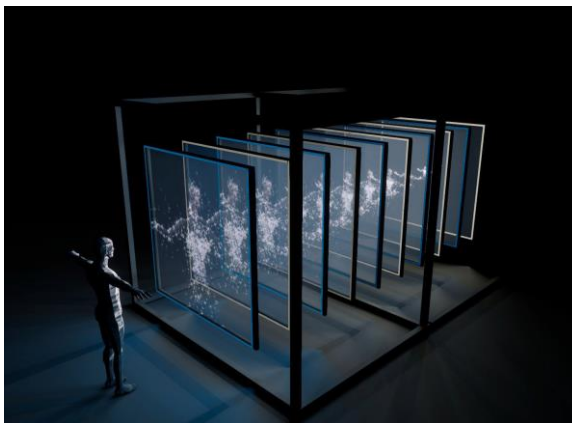
Created by A Blank Canvas in collaboration with First Nations artist Elizabeth Close and Jack Buckskin, it represents the Kurna Peoples.



Ctrl-Alt-Self

This immersive and interactive experience, created by Studio John Fish, features a freestanding sculpture made up of ten aluminium squares suspended in a row.

A projector shines light through the layers of each square, creating a holographic effect that scans me. I can see myself as a digital avatar and interact with this projected version of myself in real-time. The work also includes an audio soundscape.



Presence Passage

Local artist Ariadne Concha has created a collection of 12 illustrations that are relatable and accessible to everyone in the Wyndham community.

These drawings are projected along a pathway for you to enjoy.



The Lanternist

Oversized lantern sculptures will be illuminated and placed throughout the event.



These oversized lantern sculptures are lit and stationary, positioned throughout the event.

Shadow Play

Debuting at LIT this year, Shadow Play is an interactive sculpture featuring a large panoramic video screen behind an acrylic wall. I can walk between the layers, becoming part of the artwork while viewers outside see my silhouette. The piece is playful, immersive, and includes a soundscape.



Stargate

Created by Chalk River Labs, this innovative, interactive, and immersive projection sculpture features a 12ft square with a circular ring in the centre.

Using projection mapping technology, I am invited to climb into the central ring. The projections on the sculpture are hypnotic, accompanied by an original soundtrack.



Free Falling

The projections will light up the playground equipment and evoke nostalgia and wonder. I can watch as images and objects soar up high while the diver glides down, bringing a playful retro scene to the park.

Animation by Tobias Edwards. This playground will be closed for play from March 24 to April 14.



Children's Slide Project

Local grade 3 and 4 students from primary schools across Wyndham have created artworks that will be projected onto the slide at Wyndham Park.

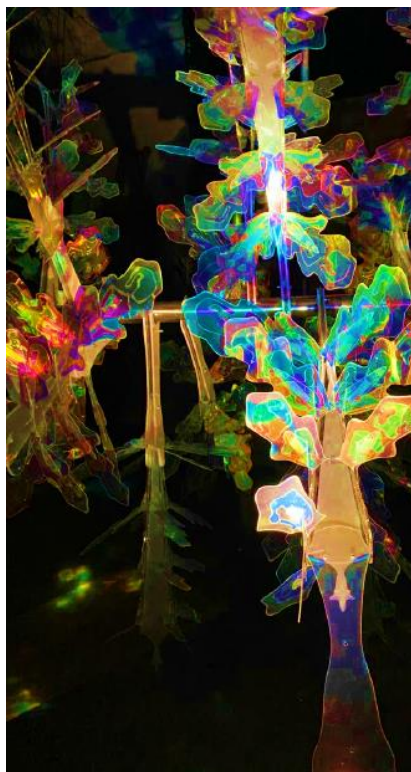
The images move as I slide down. The slide has been modified with a decal to enable the projections.



Crystal Realm

A trail along the Werribee River will feature glowing structures ranging from 3 to 6 meters in height, creating a dynamic overhead display.

The trail will also feature crystal-like flowers sprouting outward. An immersive soundscape will accompany the installation along the entire trail.



The park will feature additional lighting, including illuminated pathways, trees, entrances, and safety lighting.

The event may also include moving, flashing and strobing lighting effects.

Please note that the space is not sound-proof and residual sound from the event can be heard.



SENSORY SPACE

There is a sensory space I can go to if I need a quieter space to self-regulate and assist with reducing sensory input.



The event supports the Hidden Disabilities Sunflower Initiative. Prior to the event you can pick up one free Sunflower product from any Wyndham City Council Library. If I need assistance on the day, I can ask a staff member wearing a pink high vis vest or look for a staff member wearing this badge.



TOILETS

There will be toilets including an accessible toilet located on the top level of Wyndham Park. Access to the toilets is via stairs or the accessible ramp.

Please note, there are no toilets with a hoist or shower facilities onsite.



PEOPLE

The event attracts large crowds and features numerous lights and lighting technologies.

For a quieter experience, it is best to visit on weekdays or during one of the Sensory Friendly Nights: Wednesday 2 April or Wednesday 9 April 2025. On these nights, the lighting and sound will be adjusted to make the environment more comfortable. The quietest way to enter is through the Skate Park entrance.



FOOD

There are no food or drinks available for purchase onsite at LIT.

LIT is in the heart of Werribee, with easy access to local restaurants and cafes. You are welcome to bring your own food or takeaway into the event.

LIT is an alcohol-free event, and bringing your own alcohol is not permitted.

WATER

I can bring my own water bottle and fill it up at the water fountains located in multiple locations in the park.

STAFF

If I need help, I can find event staff to help me. They will be wearing pink high vis vest with EVENT STAFF displayed on the back of it.



THINGS YOU MIGHT LIKE TO BRING

- Jacket
- Jumper
- Comfortable closed shoes
- Water bottle
- Food and snacks or money to buy my own
- Headphones or earmuffs
- Sensory tools
A small selection will be available in the Sensory Space

Image Credits

Page 5

Ephemeral Collection by Atelier Sisu

Image credit: Jesse Lindemann

Page 6

The Guardians by artist Matthew Aberline, with the Beautiful and Useful Studio

Page 7

Tarutharu - The Kurna Skink created by A Blanck Canvas in collaboration with Elizabeth Close Arts & Jack Buckskin, as a representative of the Kurna Peoples. (c) 2021 A Blanck Canvas