

## Dwelling/Unit Numbers – December 2024

### Dwellings and units

Building permits for 254 dwellings and 6 units in Wyndham were issued in December 2024, as shown in the attached table and graphs.

The units are in:

- Werribee (6)

### Key Observations

- The monthly number of dwellings/units is 260
- The 3-month cumulative figure is 1156
- The 6-month cumulative figure is 2442
- The 12-month cumulative figure for the 2024 calendar year is 4671. This is higher than the total for 2023 (3646) and the highest figure since 2021 (5444).

### Comments

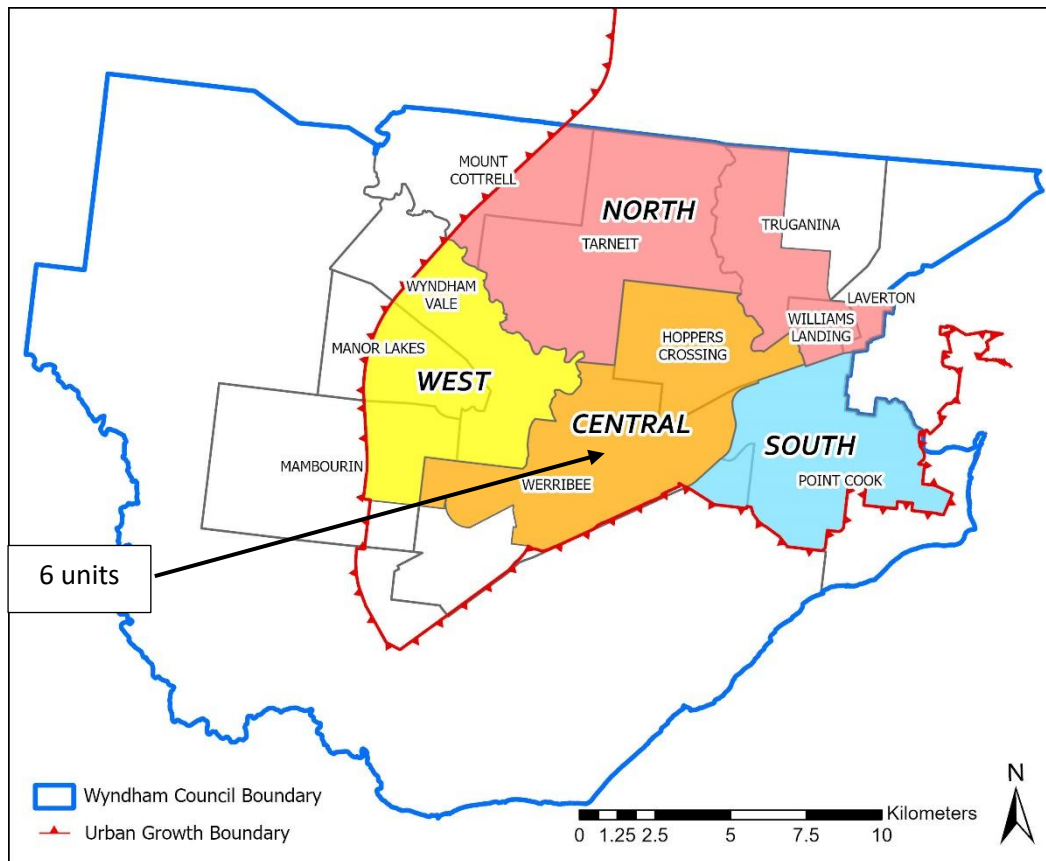
The December 2024 distribution of dwellings/units between Wyndham's suburbs is summarised in the table below:

Region	Total percentage	Suburb	Percentage
North	53%	Laverton	0%
		Mount Cottrell	0%
		Tarneit	43%
		Truganina	10%
		Williams Landing	0%
Central	13%	Hoppers Crossing	0%
		Werribee	13%
West	27%	Manor Lakes	4%
		Mambourin	7%
		Wyndham Vale	16%
South	7%	Point Cook	7%

The three suburbs with the highest number of dwellings/units in December 2024 are:

1. Tarneit (111)
2. Wyndham Vale (41)
3. Werribee (34)

The North region of Wyndham (Tarneit, Truganina, Williams Landing, Laverton and Mount Cottrell) had the highest number of dwellings/units in 2024 (2394).



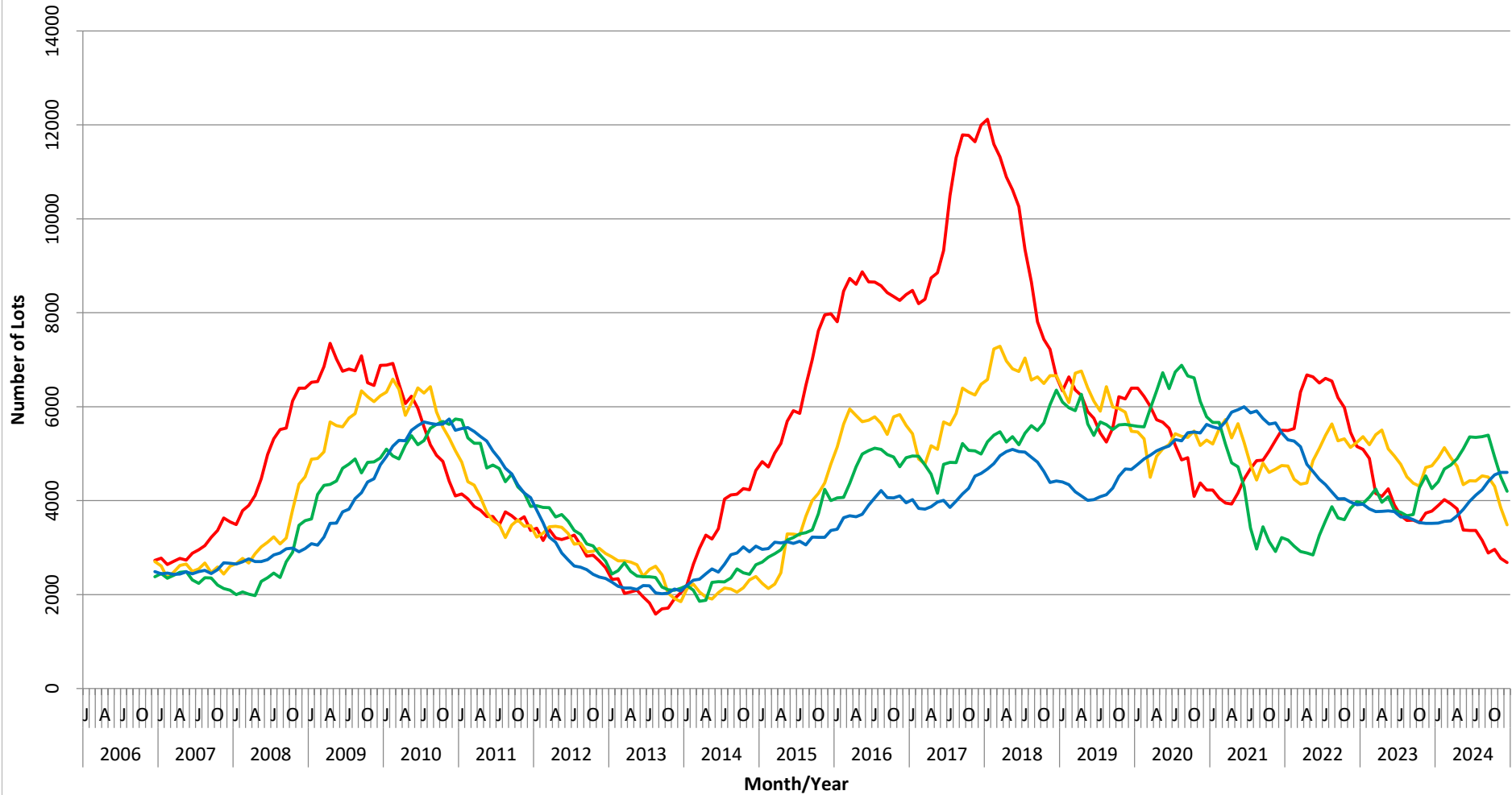
Queries may be directed to Council's Strategic Planning Unit. This bulletin relies on data from Council's Building Services Department, WCC Proclaim Profiler Reports and analysis by Building Services and Strategic Planning.

YEAR	3, 6 and 12 MONTH RUNNING TOTALS	NUMBER OF DWELLINGS/UNITS APPROVED BY BUILDING PERMITS (By Month)												YEARLY TOTAL		
		J	F	M	A	M	J	J	A	S	O	N	D			
2001																2031
2002	THREE MONTHS	126	249	216	224	267	239	250	241	183	269	196	182			2642
	SIX MONTHS	1297	1248	1304	1305	1352	1321	1445	1437	1404	1449	1378	1321			
	TWELVE MONTHS	2061	2194	2291	2396	2516	2635	2742	2685	2708	2754	2730	2642			
2003	THREE MONTHS	138	221	278	265	212	252	291	214	228	355	222	230			2906
	SIX MONTHS	516	541	637	764	755	729	755	757	733	797	805	807			
	TWELVE MONTHS	1209	1189	1284	1280	1296	1366	1519	1512	1462	1552	1562	1540			
2004	THREE MONTHS	113	253	164	285	288	249	206	204	207	218	255	172			2614
	SIX MONTHS	565	596	530	702	737	822	743	659	617	629	680	645			
	TWELVE MONTHS	1362	1401	1337	1267	1333	1352	1445	1396	1439	1372	1339	1262			
2005	THREE MONTHS	117	168	130	243	215	305	192	169	192	192	242	175			2340
	SIX MONTHS	544	457	415	541	588	763	712	666	553	553	626	609			
	TWELVE MONTHS	1173	1137	1060	1085	1045	1178	1253	1254	1316	1265	1292	1162			
2006	THREE MONTHS	161	202	230	169	215	184	214	240	268	205	216	188			2492
	SIX MONTHS	578	538	593	601	614	568	613	638	722	713	689	609			
	TWELVE MONTHS	1131	1164	1202	1179	1152	1161	1214	1252	1290	1326	1327	1331			
2007	THREE MONTHS	112	219	200	178	259	142	264	266	201	286	360	181			2668
	SIX MONTHS	516	519	531	597	637	579	665	672	731	753	847	827			
	TWELVE MONTHS	1229	1208	1140	1113	1156	1110	1262	1309	1310	1418	1519	1558			
2008	THREE MONTHS	93	266	267	119	259	184	363	306	293	299	280	250			2979
	SIX MONTHS	634	540	626	652	645	562	806	853	962	898	872	829			
	TWELVE MONTHS	1387	1387	1453	1286	1185	1188	1458	1498	1524	1704	1725	1791			
2009	THREE MONTHS	200	234	439	412	262	423	419	535	415	528	351	544			4762
	SIX MONTHS	730	684	873	1085	1113	1097	1104	1377	1369	1478	1294	1423			
	TWELVE MONTHS	1628	1556	1702	1815	1797	1970	2189	2490	2466	2582	2671	2792			
2010	THREE MONTHS	381	449	567	402	485	520	498	507	394	530	460	305			5498
	SIX MONTHS	1276	1374	1397	1418	1454	1407	1503	1525	1399	1431	1384	1295			
	TWELVE MONTHS	2754	2668	2820	2694	2828	2804	2921	2979	2806	2934	2909	2694			
2011	THREE MONTHS	417	473	482	297	387	313	331	302	271	299	284	208			4064
	SIX MONTHS	1182	1195	1372	1252	1166	997	1031	946	904	872	854	791			
	TWELVE MONTHS	2613	2579	2667	2434	2361	2369	2283	2112	1901	1903	1800	1695			
2012	THREE MONTHS	149	205	177	188	157	170	200	277	216	203	226	176			2344
	SIX MONTHS	641	562	531	570	522	515	527	647	693	696	645	605			
	TWELVE MONTHS	1513	1416	1322	1211	1084	1046	1097	1169	1208	1223	1292	1298			
2013	THREE MONTHS	70	117	142	188	125	250	197	126	198	217	313	133			2076
	SIX MONTHS	472	363	329	447	455	563	572	573	521	541	728	663			
	TWELVE MONTHS	1168	1008	934	919	818	892	1019	1028	1084	1113	1301	1184			
2014	THREE MONTHS	193	224	162	304	232	182	362	329	233	347	210	255			3033
	SIX MONTHS	639	550	579	690	698	718	776	873	924	909	790	812			
	TWELVE MONTHS	1180	1278	1242	1329	1248	1297	1466	1571	1642	1685	1663	1736			
2015	THREE MONTHS	124	241	296	290	255	148	407	250	401	341	211	401			3368
	SIX MONTHS	589	620	661	827	841	693	810	805	1058	992	956	956			
	TWELVE MONTHS	1498	1410	1473	1416	1461	1354	1637	1646	1751	1802	1761	2014			
2016	THREE MONTHS	148	485	337	272	304	343	561	407	253	332	260	255			3957
	SIX MONTHS	763	1034	970	1094	913	919	1208	1311	1221	992	845	847			
	TWELVE MONTHS	1755	1990	1926	1857	1947	1889	2302	2224	2140	2200	2156	2068			
2017	THREE MONTHS	212	301	319	324	402	379	412	543	401	450	520	315			4578
	SIX MONTHS	727	768	832	944	1045	1105	1193	1334	1356	1394	1371	1285			
	TWELVE MONTHS	1719	1613	1679	1671	1813	1937	2349	2379	2461	2587	2705	2641			
2018	THREE MONTHS	304	419	484	413	448	334	399	437	299	252	286	343			4418
	SIX MONTHS	1139	1038	1207	1316	1345	1195	1181	1170	1135	988	837	837			
	TWELVE MONTHS	2533	2409	2492	2455	2383	2402	2497	2515	2330	2169	2007	2016			
2019	THREE MONTHS	284	363	330	324	355	352	458	482	441	498	443	336			4666
	SIX MONTHS	913	990	977	1017	1009	1031	1165	1292	1381	1421	1382	1277			
	TWELVE MONTHS	1901	1827	1858	1930	1999	2008	2182	2301	2412	2586	2674	2658			
2020	THREE MONTHS	393	476	409	419	410	402	593	453	614	516	419	522			5626
	SIX MONTHS	1172	1205	1278	1304	1238	1231	1405	1448	1660	1583	1549	1457			
	TWELVE MONTHS	2593	2587	2555	2476	2443	2509	2709	2686	2891	2988	2997	3117			
2021	THREE MONTHS	340	439	556	620	460	467	461	497	451	397	444	312			5444
	SIX MONTHS	1281	1301	1335	1615	1636	1547	1388	1425	1409	1345	1292	1153			
	TWELVE MONTHS	2864	2850	2792	2896	2937	2882	3003	3061	2956	2733	2717	2562			
2022	THREE MONTHS	189	413	440	245	307	349	351	382	311	398	371	255			4011
	SIX MONTHS	945	914	1042	1098	992	901	1007	1082	1044	1091	1080	1024			
	TWELVE MONTHS	2290	2206	2195	2043	1906	1943	2105	2074	1945	2098	2162	2068			
2023	THREE MONTHS	201	326	410	254	319	283	263	332	257	365	357	279			3646
	SIX MONTHS	827	782	937	990	983	856	865	878	852	954	979	1001			
	TWELVE MONTHS	1918	1862	1961	1817	1765	1793	1855	1861	1708	1819	1857	1853			
2024	THREE MONTHS	243	381	389	391	452	373	406	442	438	472	424	260			4671
	SIX MONTHS	879	903	1013	1161	1232	1216	1231	1221	1286	1352	1334	1156			
	TWELVE MONTHS	1833	1882	2014	2040	2135	2229	2392	2453	2502	2583	2555	2442			

# Number of Lots Processed - Wyndham

## 12 Month Running Totals: December 2006 - December 2024

Source: WCC Proclaim Profiler Report and Building Permit Statistics . Note: "Lots" refers to all lots, regardless of use, Building Permits account for dwellings and units individually.



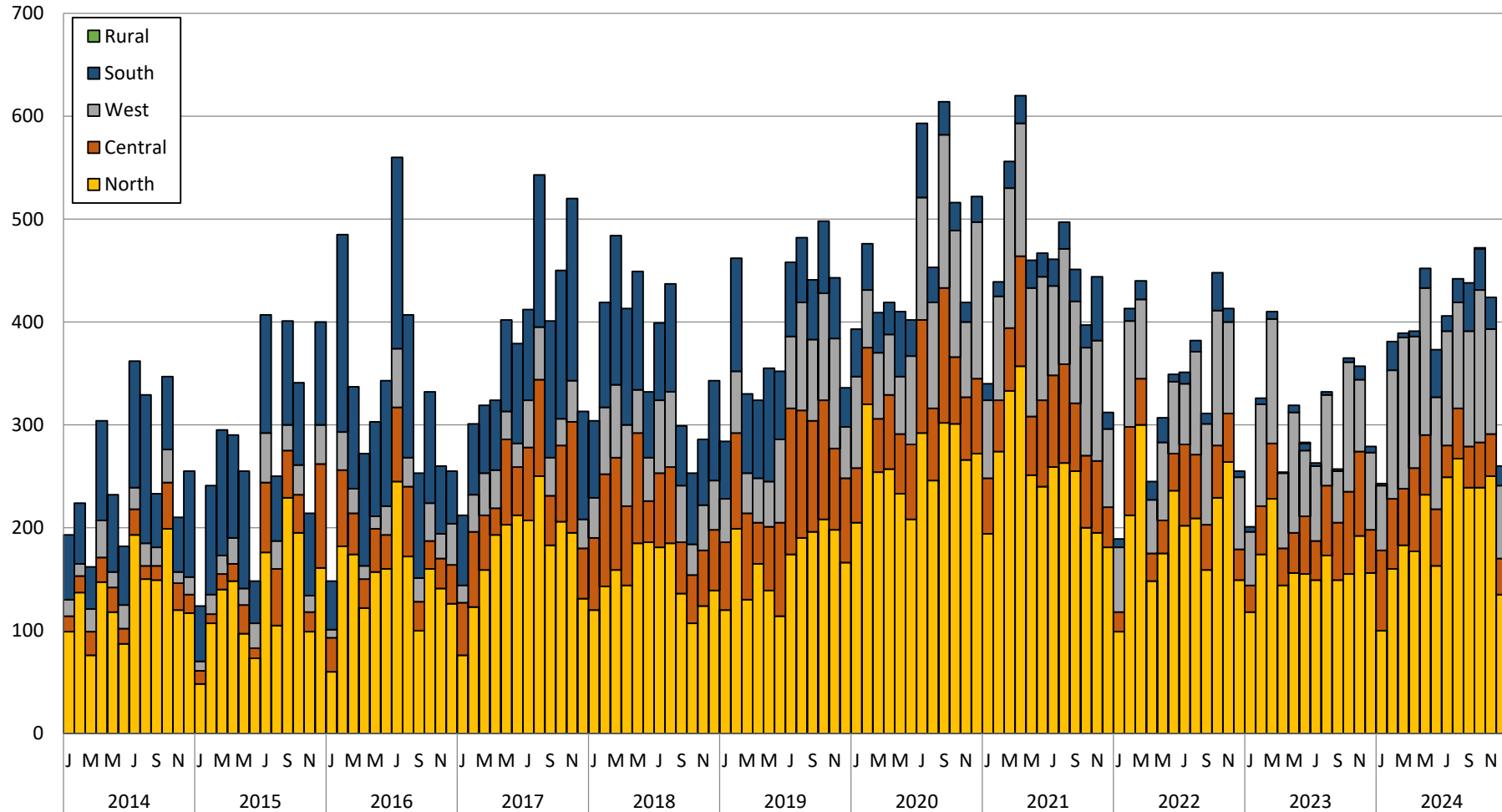
— Certified Request Received   
 — Certified   
 — Statement of Compliance Released   
 — Building Permits



# Number of Approved Dwelling/Units (by Dwelling Permit Area and Month)

## January 2014 - December 2024

Source: WCC Building Permit Statistics . Note: "Lots" refers to all lots, regardless of use, Building Permits account for dwellings and units individually.



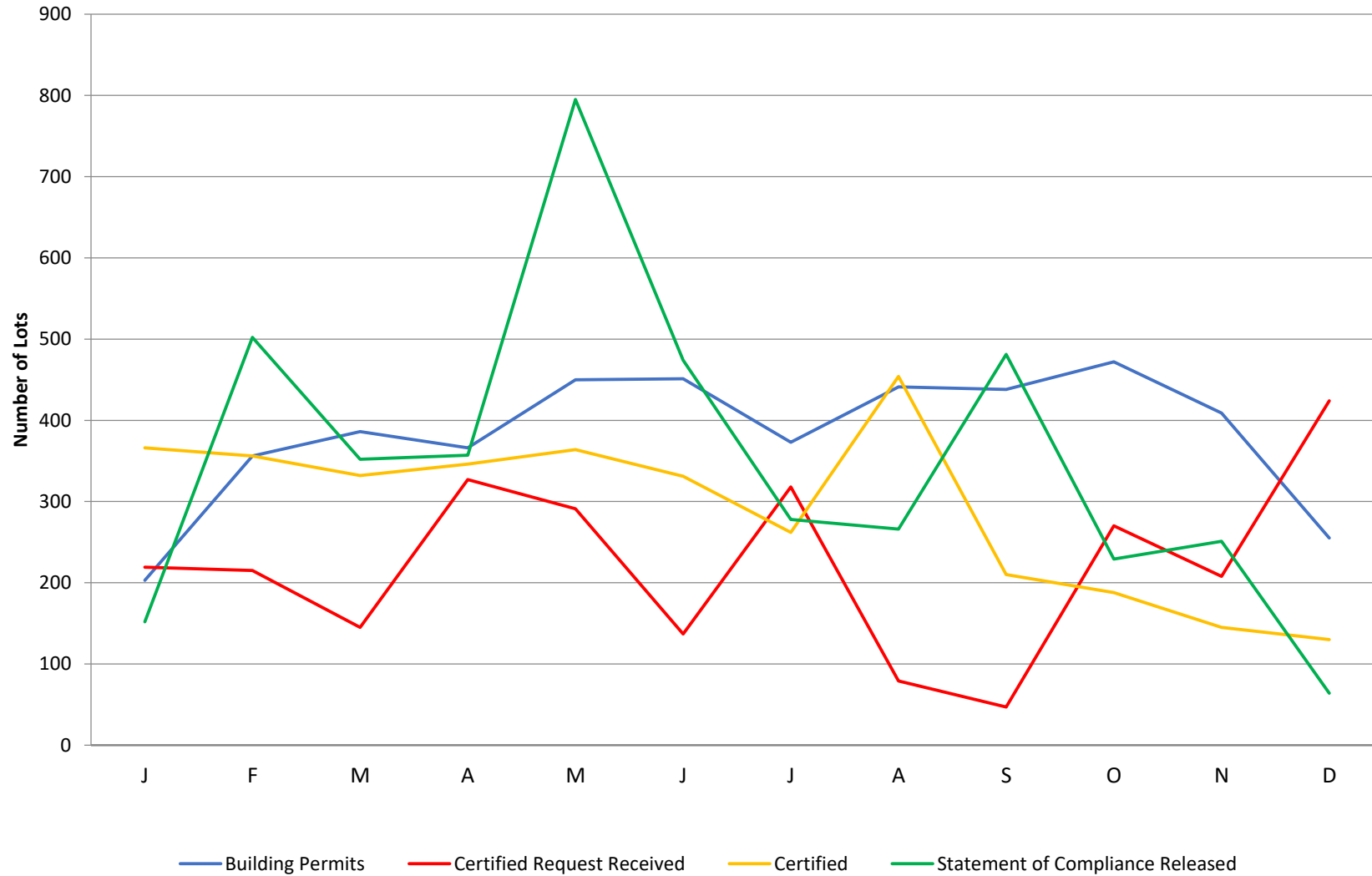
Note: Dwelling permit areas contain the following suburbs:  
 North = Laverton, Mount Cottrell, Tarneit, Truganina & Williams Landing  
 South = Point Cook & Werribee South

West = Wyndham Vale, Mambourin & Manor Lakes  
 Rural = Little River

Central = Hoppers Crossing & Werribee

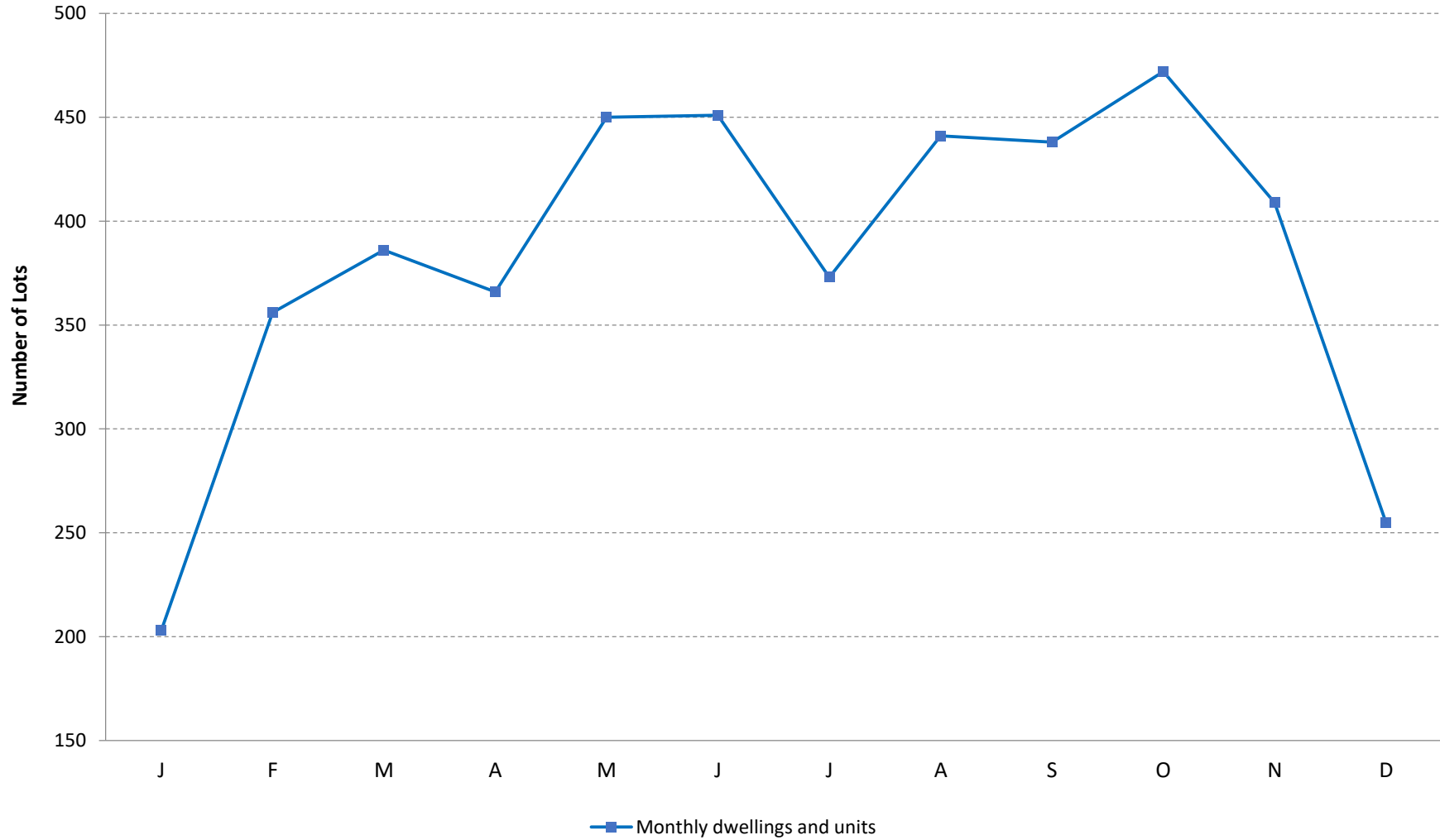
# Wyndham - Number of Lots Processed January-December 2024

Source: WCC Proclaim Profiler Report and Building Permit Statistics . Note: "Lots" refers to all lots, regardless of use, Building Permits account for dwellings and units individually.



# Wyndham - Number of Approved Dwelling/Units January-December 2024

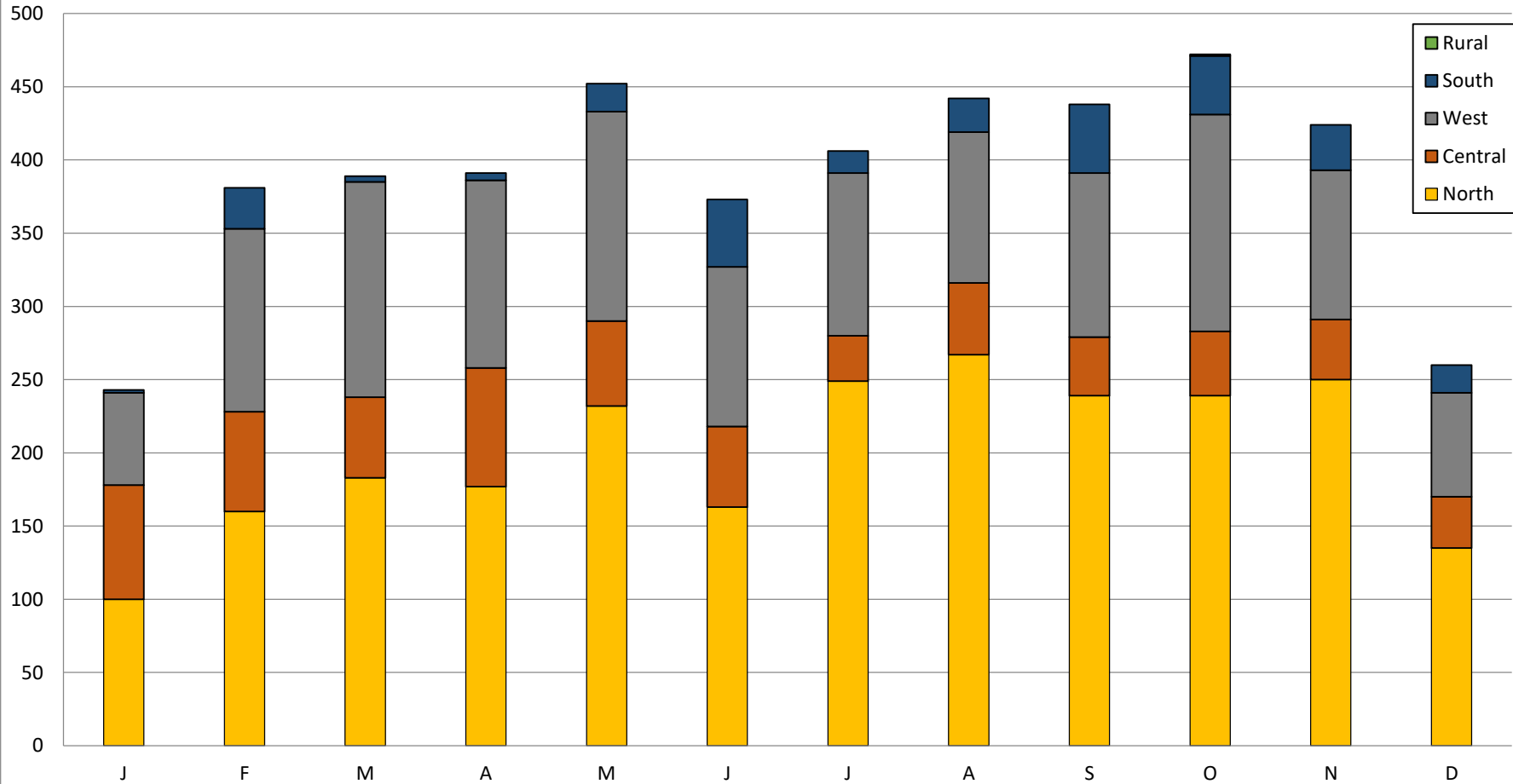
Source: WCC Building Permit Statistics . Note: "Lots" refers to all lots, regardless of use, Building Permits account for dwellings and units individually.





## Wyndham - Number of Approved Dwelling/Units (by Dwelling Permit Area) January-December 2024

Source: WCC Building Permit Statistics . Note: "Lots" refers to all lots, regardless of use, Building Permits account for dwellings and units individually.



Note: Dwelling permit areas contain the following suburbs:  
 North = Laverton, Mount Cottrell, Tarneit, Truganina & Williams Landing  
 South = Point Cook & Werribee South

West = Wyndham Vale, Mambourin & Manor Lakes  
 Rural = Little River

Central = Hoppers Crossing & Werribee