



SOCIAL STORY

WYNDHAM DISABILITY CONNECTION EXPO

2025

I will make my way to:
Encore Events Centre
80 Derrimut Rd,
Hoppers Crossing
VIC, 3029

I can get there by either:



Car or Uber



Bus

There is car parking at Encore.

You can park in the main car park or the Second Car Park.

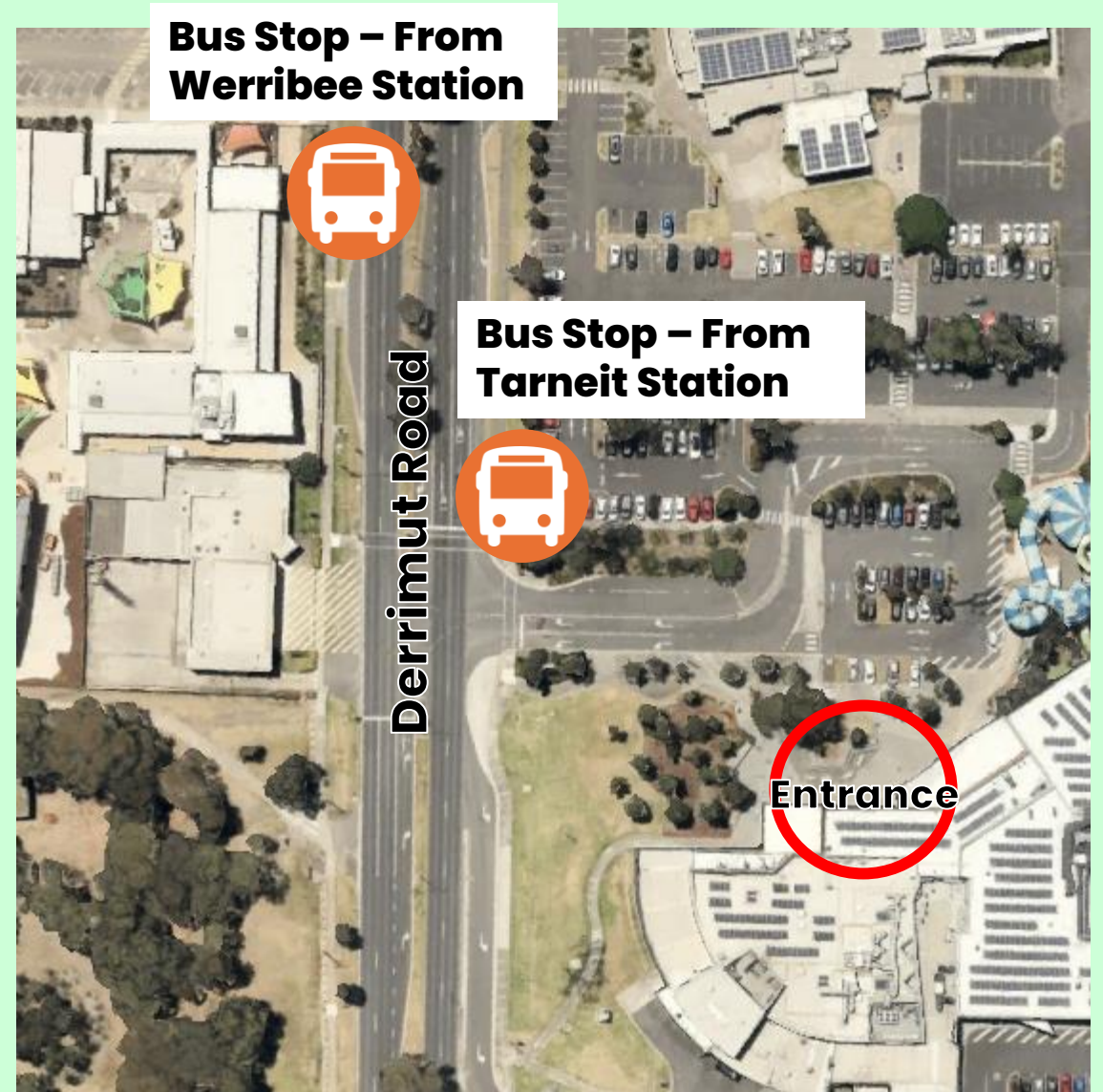


There is a bus to the Expo.

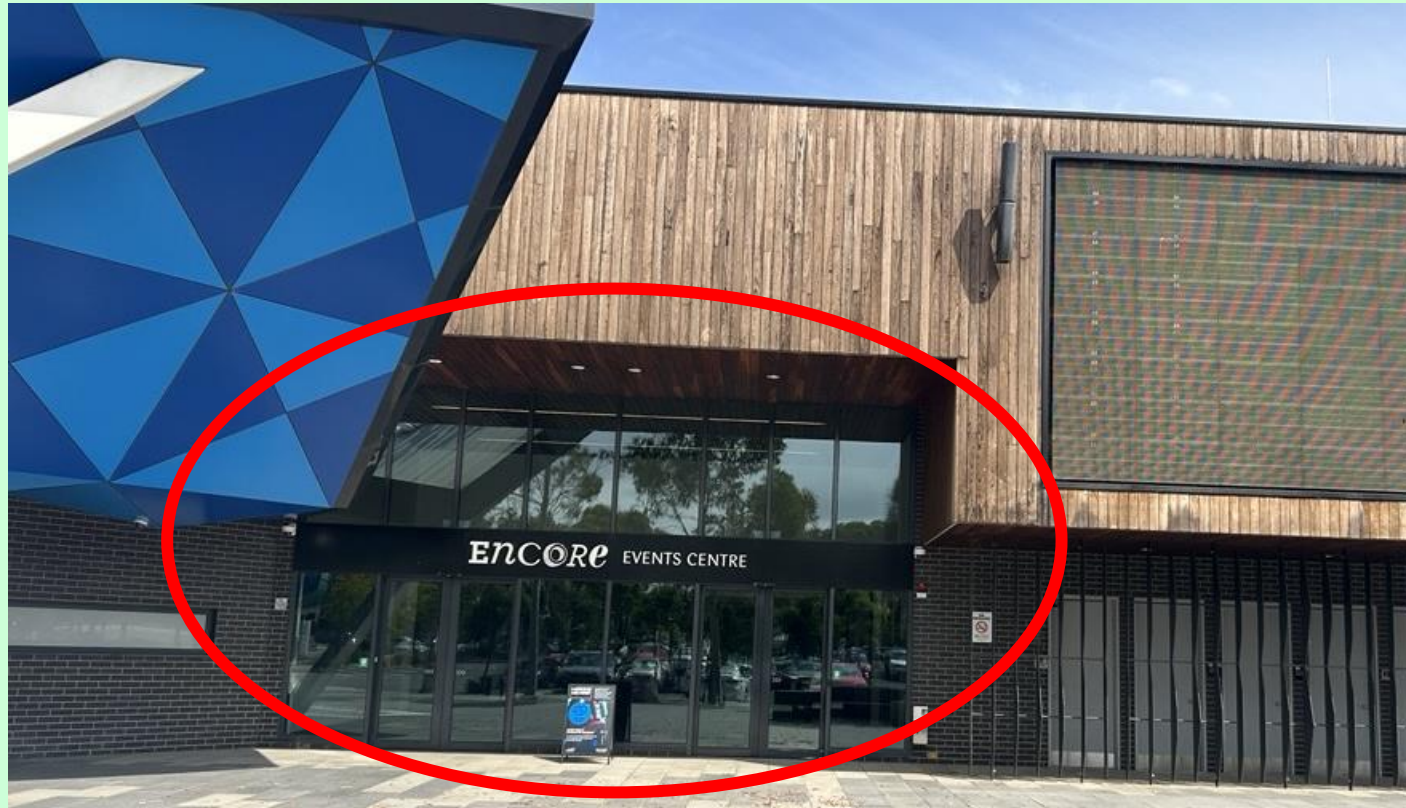
You can view the Public Transport Victoria website for timetables for the bus.

You can take bus route 170 and disembark at

**Aqua Pulse Leisure Centre/Derrimut Rd,
in Hoppers Crossing**



When I arrive, I will go to this entrance:



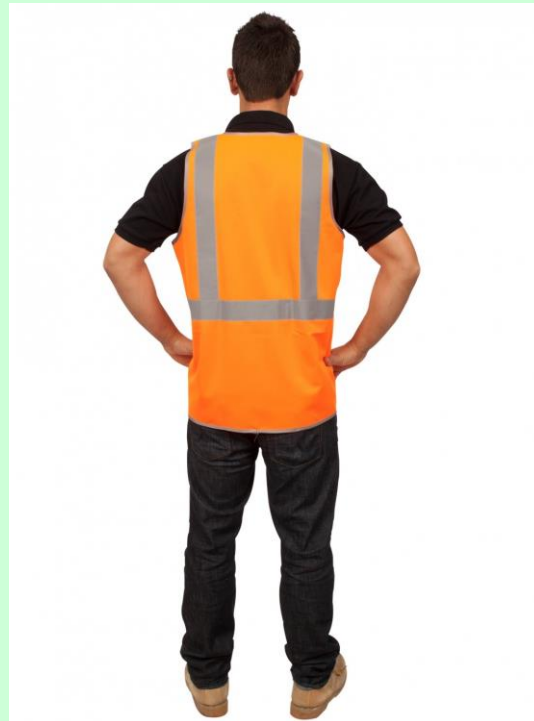
There may be a group waiting to enter the Expo. I will join the back of the line.

Once I reach the registration desk, I will:

- **Present the staff with my ticket (this will be in my emails).**
- **If I can't find my ticket, I will ask the registration desk staff for help.**

If I need help inside the Expo I can:

- Talk to staff wearing a high vis vest
- Go to the sensory or quiet spaces



I can look at different stalls at the event. I can ask the stallholders questions.



I can watch presentations from guest speakers. This timetable tells me when each speaker presents.

10:15am	Brotherhood of St Laurence	Understanding Your Plan, For Participants
11:00am	Whole Nutrition	Understanding the basics of Avoidant Restrictive Food Intake Disorder (ARFID)
12:00pm	Carers Victoria	Self Care for Carers
1:00pm	Australian Human Rights Commission	Disability Rights
2:00pm	Matthew Haanappel OAM PLY	

There are signs that say GUEST SPEAKERS.



I can follow these signs to attend the sessions. I can ask for help finding these.

If I feel like having a hot drink or snack, I can purchase something from the kiosk. The kiosk is in the Foyer space.



I might talk to people about services that can help me, I will learn about activities in my neighbourhood, and I will have fun!